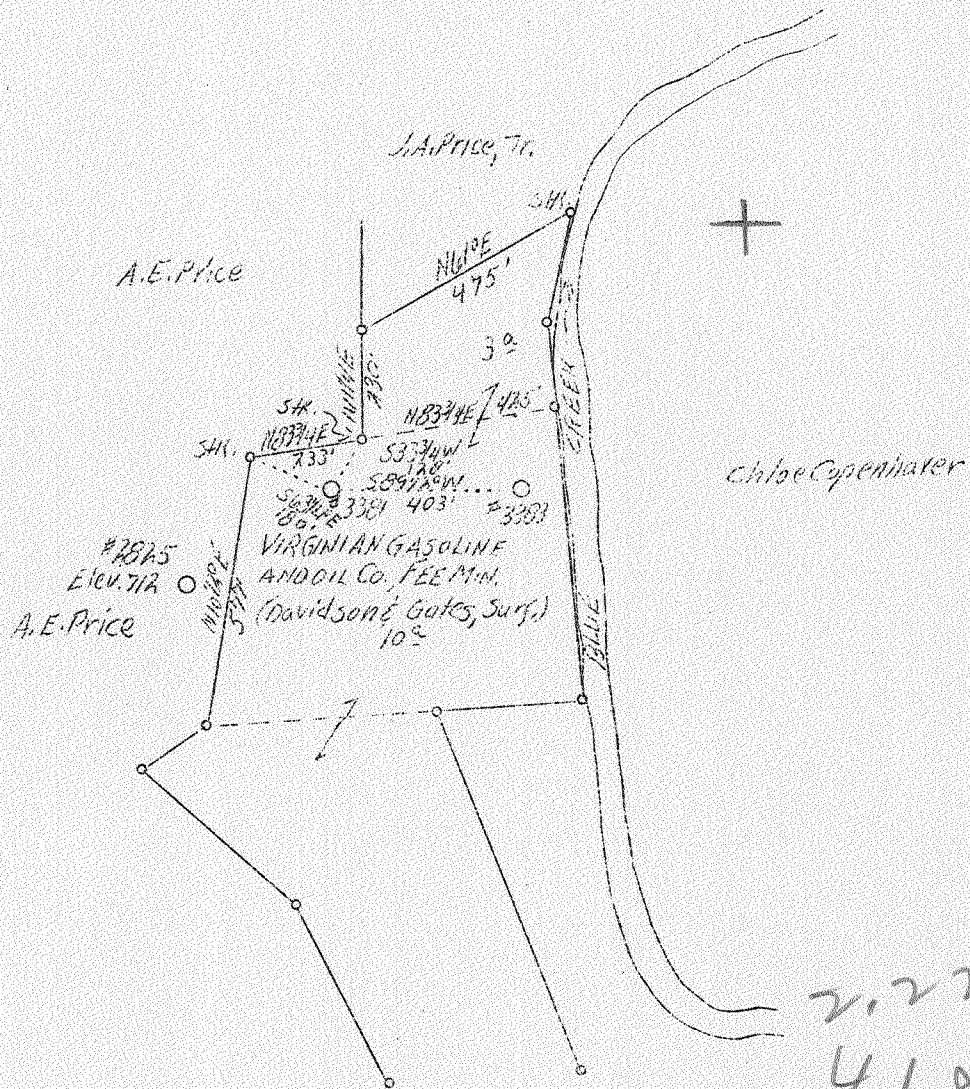


LATITUDE 38° 30'

LONGITUDE 81° 25'



Note: No log available for well #3381. Will use log for well #2825 for ABD. of well #3381

✓ MAY - 8 1939

Company Virginian Gasoline & Oil Co.,
 Address Charleston, W. Va.
 Farm Virginian Gasoline & Oil, fee
 Acres 10
 Lease No. 27464
 Well (Farm) No. 5
 Section No. 3381
 Elevation 715 (Barometer)
 Quadrangle Clendenin
 County Kanawha
 District Elk
 Engineer G. A. Cunningham
 Eng. Reg. No. 659
 File No. 70-65
 Date April 27, 1939
 Scale 1" = 400'

STATE OF WEST VIRGINIA
 Department of Mines
 OIL & GAS DIVISION
 Charleston

WELL LOCATION MAP

File No. Kan-265-A

x Denotes location of well on U. S. Topographic Maps, scale 1 to 62,500, latitude and longitude lines being represented by border lines as shown.

- Denotes one inch spaces on border line of original tracing.

STATE OF WEST VIRGINIA
DEPARTMENT OF MINES
OIL AND GAS DIVISION

732

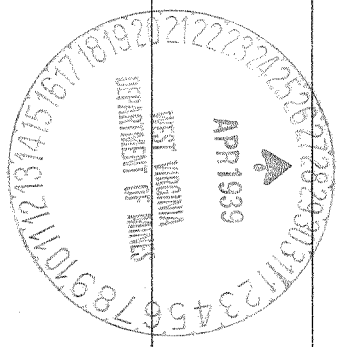
WELL RECORD

Permit No. 265-A

Oil or Gas Well. Oil
(Kind)

Company	Virginian Gasoline & Oil	Casing and Tubing	Used in Drilling	Left in Well	Packers
Address	Charleston, W. Va.	Size			
Farm	Davidson & Gates Acres 10	16			Kind of Packer
Location (waters)	Blus Creek	18			Size of
Well No.	3381 Elev. 715	10			Depth set
District	Elk County Kanawha	8 1/4	No Record		Perf. top
The surface of tract is owned in fee by	Address	5 3/16			Perf. bottom
Mineral rights are owned by	Virginian Gasoline & Oil Co. Address Charleston, W. Va.	3			Perf. top
Drilling commenced	No Record	2			Perf. bottom
Drilling completed		Liners Used			
Date shot	Depth of shot 1746				
Open Flow	/10ths Water in Inch				
	/10ths Merc. in Inch				
Volume	Cu. Ft.				
Rock Pressure	lbs. hrs.				
Oil	No Record bbls., 1st 24 hrs.				
Fresh water	feet				
Salt water	feet				
		CASING CEMENTED	SIZE	No. FT.	Date
		COAL WAS ENCOUNTERED AT FEET INCHES			
		FEET INCHES FEET INCHES			
		FEET INCHES FEET INCHES			

Formation	Color	Hard or Soft	Top	Bottom	Oil Gas or Water	Depth Found	Remarks
Black Slate			505	522			
Sand			522	630			
Slate (Blk)			630	710			
Sand			710	830			
Salt Sand			830	1360	Salt Water		
Red Rock			1360	1365	Gas		
Lime			1365	1410			
Big Lime			1410	1440			
Little Lime			1440	1478			
Slate			1478	1483			
Large Little Lime			1483	1495			
Big Lime			1495	1668			
Big Injun			1668	1680			
Red Rock			1680	1693			
Slate & Shells			1693	1730			
Sand			1730	1736			
Slate			1736	1743			
Sil Sand			1743	1760	Oil		
Total Depth			1764'				



MAY 21 1939

Formation	Color	Hard or Soft	Top	Bottom	Oil, Gas or Water	Depth Found	Remarks

Date April 27, 1939

APPROVED VIRGINIAN GASOLINE & OIL Co, Owner

By G. A. Cunningham
(Title)