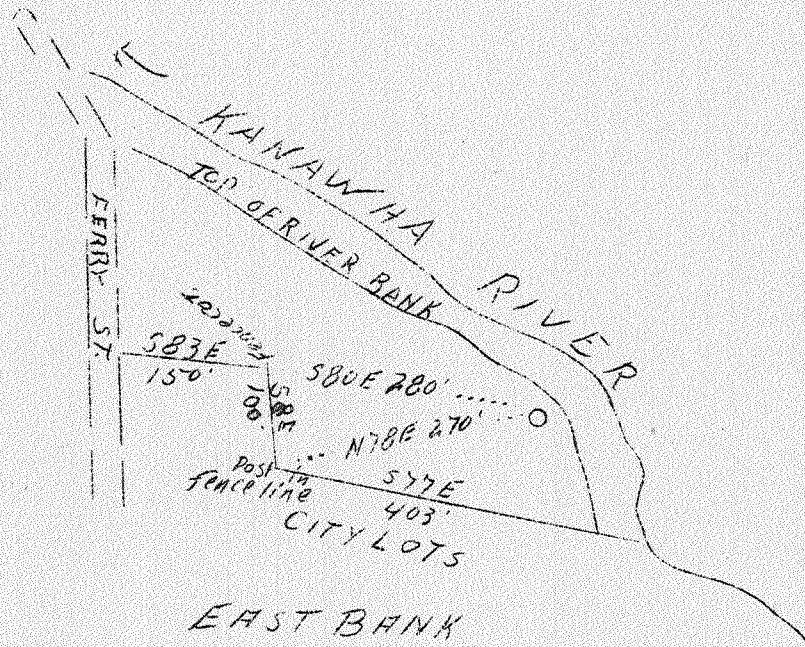


LATITUDE 38° 15'

LONGITUDE 81° 25'



1.19 W  
2.15 R

ABD.

JUL 17 1939

Company	Godfrey L. Cabot, Inc.,
Address	600 Union Bldg., Charleston, W. Va.
Farm	Mary L. Chapman
Tract	1
Acres	2 - plus
Lease No.	466
Well (Farm) No.	1
Serial No.	156
Elevation (SL)	612
Quadrangle	Montgomery
County	Kanawha
District	Cabin Creek
Engineer	Q. L. Fitz Randolph
Eng. Reg. No.	806
Date	June 30, 1939
Scale	1" - 200'

(NW)

STATE OF WEST VIRGINIA  
Department of Mines  
OIL & GAS DIVISION  
Charleston

WELL LOCATION MAP

File No. KCA-273-A

x Denotes location of well on U. S. Topographic Maps, scale 1 to 62,500, latitude and longitude lines being represented by border lines as shown.

- Denotes one inch spaces on border line of original tracing.

GODFREY L. CABOT, INC.

WELL RECORD

757

*Hand Kar-  
N.B.A.  
Montgomery N.W.*

SERIAL NO. 156 OPERATING DISTRICT Auk Map Square 29-43  
 FARM Mary Chapman NO. 1 LEASE NO.  
 COUNTY Kanawha TAX DISTRICT Cabin Creek STATE West Virginia  
 DRILLING COMMENCED April 26, 1917 DRILLING COMPLETED July 7, 1917  
 CONTRACTOR T. D. Shaffer ADDRESS

ROCK PRESSURE RECORD			PRODUCING SAND RECORD			
Sand	lbs., in	hrs.	Sand, from	to	Init. Prod.	M. C. F. Gas
Sand	lbs., in	hrs.	Sand, from	to	Init. Prod.	M. C. F. Gas
Sand	lbs., in	hrs.	Sand, from	to	Init. Prod.	M. C. F. Gas

OPEN FLOW			CASING RECORD			
Time, Condition:			HOW CASING SET			
10ths	Water	inch opening	SIZE	WEIGHT	USED IN DRILLING	LEFT IN WELL
Volume	M. C. F.		12 1/8"		50'	50'
24 HOUR PRODUCTION TEST AFTER TUBING			10		350	Pulled
M. C. F.	Line Pressure		8		1065	pulled
Bbls. Oil	in 24 Hours		6-5/8"		1398	1398

TUBED AND SHUT IN			SHOOTING RECORD				
Date			Shot with from to Date				
Driller, Size	6-5/8"x12"	Kind Larkin	Gauge Before Shot				Min. Hrs. After Shot
Depth	1460	Size Anchor	Gauge				
Top	1480	Bottom 1500					
Top	1680	Bottom 1700					

FORMATION	COLOR	TOP	BOTTOM	STEEL LINE MEASUREMENTS	HARD OR SOFT	OIL, GAS OR WATER	DEPTH FOUND	DISTANCE ABOVE OR BELOW S. L.	REMARKS
Native Coal		70	75						Surface water at 15'; hole full; couldn't get
Little Dunkard		80	150						10" casing tight;
Big Dunkard		200	250						drilled hole wet to 1065
First Salt		345	570						
Second Salt		650	885						
Maxon		1215	1265						
Little Lime		1325	1345						
Pencil Cave		1345	1355						
Big Lime		1355	1525			Gas	1375		Smell
Big Injun		1540	1580			"	1640		1st pay
Wier Sand		1595	1765			"	1682		2d "
						"	1720		3d " (very little)
									Wier Sand badly broken up.
Total Depth			1766						
Later drilled to			1800						

