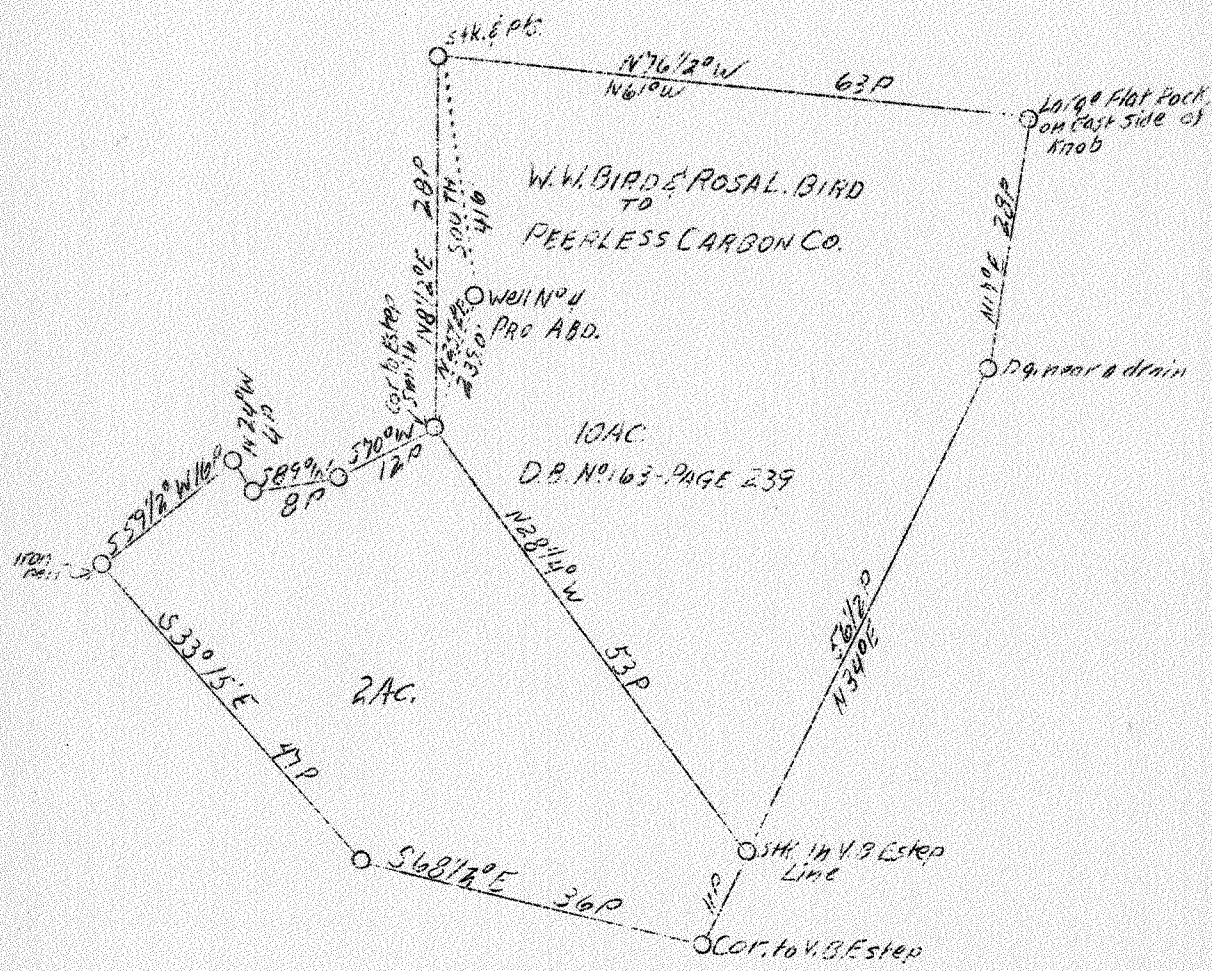


LATITUDE 38° 30'



LONGITUDE 81° 20'



1.65 W
0.71 A

AUG - 8 1939

A.B.D.

Company	Silman Oil & Gas Co.
Address	311 Pa. Ave., Charleston, W. Va.
Farm	Peerless Carbon Co.
Acres	12
Well (Farm) No.	4
Elevation (SL)	697
Quadrangle	Clendenin N.E.
County	Kanawha
District	Big Sandy
Engineer	A. E. Price
Eng. Reg. No.	819
Date	July 29, 1939
Scale	1" - 20 poles

STATE OF WEST VIRGINIA
 Department of Mines
 OIL & GAS DIVISION
 Charleston

WELL LOCATION MAP

File No. KAN-275-A

x Denotes location of well on U. S. Topographic Maps, scale 1 to 62,500, latitude and longitude lines being represented by border lines as shown.

- Denotes one inch spaces on border line of original tracing.