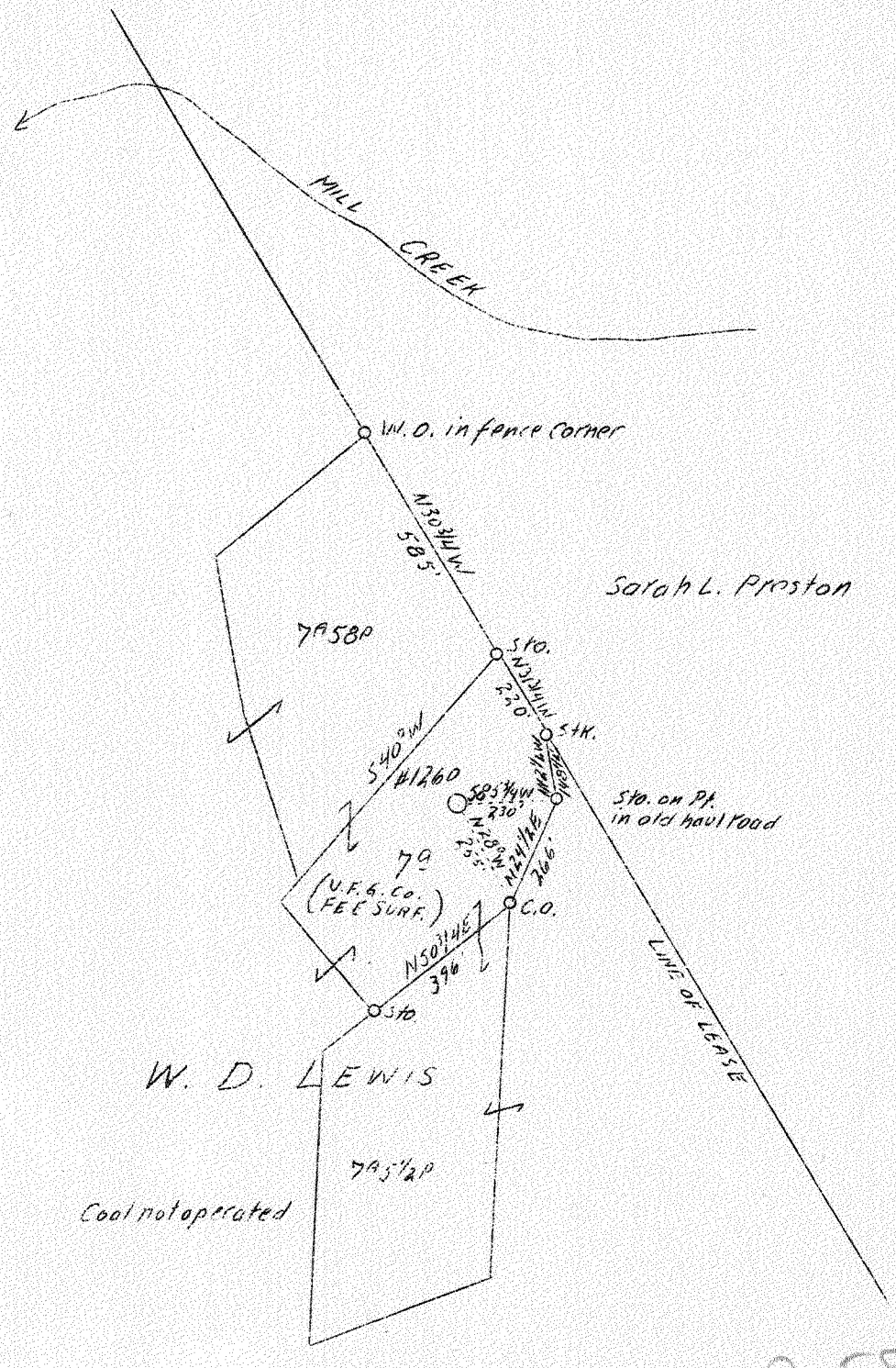


LATITUDE 38°25'

LONGITUDE 81°30'



0.58 W
3.11 Q

ABD

AUG 14 1939

Company	Virginian Gasoline & Oil Co.	STATE OF WEST VIRGINIA
Address	Charleston, W. Va.	Department of Mines
Farm	W. D. Lewis	OIL & GAS DIVISION
Tract	7 A.	Charleston
Acres	500	
Lease No.	19214	
Well (Farm) No.	1	WELL LOCATION MAP
Serial No.	1260	File No. <u>KOA-276-A</u>
Elevation (SL)	961.0	
Quadrangle	Charleston	
County	Kanawha	
District	Elk	
Engineer	G. A. Cunningham	x Denotes location of well on U. S. Topographic Maps, scale 1 to 62,500, latitude and longitude lines being represented by border lines as shown.
Eng. Reg. No.	659	- Denotes one inch spaces on border line of original tracing.
File No.	68 - 59	
Date	August 1, 1939	
Scale	1" - 400'	

STATE OF WEST VIRGINIA
DEPARTMENT OF MINES
OIL AND GAS DIVISION

760

WELL RECORD

Permit No. 276-A
Charleston EC

Oil or Gas Well OIL
(Kind)

Company Virginian Gasoline & Oil Company
Address Charleston, W. Va.
Farm W. D. Lewis Acres 500
Location (waters) Elk Two Mile Creek
Well No. 1260 Elev. 961.0
District Elk County Kanawha
The surface of tract is owned in fee by United Fuel Gas Co. et al
Address Charleston, W. Va.
Mineral rights are owned by Jemie G. Lewis et al
Address Charleston, W. Va.
Drilling commenced Jan. 3, 1917
Drilling completed Feb. 19, 1917
Date shot _____ Depth of shot 1911
Open Flow _____ /10ths Water in _____ Inch
_____ /10ths Merc. in _____ Inch
Volume _____ Cu. Ft.
Rock Pressure _____ lbs. _____ hrs.
Oil _____ 8 bbls., 1st 24 hrs.
Fresh water _____ feet _____ feet
Salt water 1000 feet _____ feet

Casing and Tubing	Used in Drilling	Left in Well	Packers
Size			
16			Kind of Packer
13			
10			Size of
8 1/4			
6 5/8	<u>1603</u>	<u>1603</u>	Depth set
5 3/16			
3			Perf. top
2			Perf. bottom
Liners Used			Perf. top
			Perf. bottom

CASING CEMENTED _____ SIZE _____ No. FT. _____ Date _____
COAL WAS ENCOUNTERED AT 185 FEET 36 INCHES
_____ FEET _____ INCHES 280 FEET 48 INCHES
_____ FEET _____ INCHES _____ FEET _____ INCHES

Formation	Color	Hard or Soft	Top	Bottom	Oil Gas or Water	Depth Found	Remarks
Conductor			0	15			
Sand			15	83			
Slate			83	185			
Coal			185	188			
Slate & Shells			188	235			
Sand			235	280			
Coal			280	284			
Slate & Shells			284	295			
Sand & Water			295	315			
Lime Shells			315	385			
Sand			385	455			
Slate & Shells			455	475			
Slate			475	503			
Slate & Shells			503	580			
Slate			580	603			
Sand			603	610			
Lime Shells			610	670			
Slate			670	685			
Sand			685	770			
Slate			770	780			
Broken Lime			780	875			
Salt Sand			875	1355	Water	1000	Hole full
Slate			1355	1370			
Lime			1370	1430			
Slate & Shells			1430	1515			
Maxon			1515	1525			
Slate			1525	1542			
Little Lime			1542	1580			
Pencil			1580	1588			
Lime			1588	1594			
Slate			1594	1600			
Big Lime			1600	1775			
Red Rock			1775	1805			
Slate			1805	1810			
Squaw			1810	1822			
Slate & Shells			1822	1900			
Weir			1900	2020	Oil & Gas	1909	
Slate			2020	2029	Oil	2005	
Total Depth				2029			

