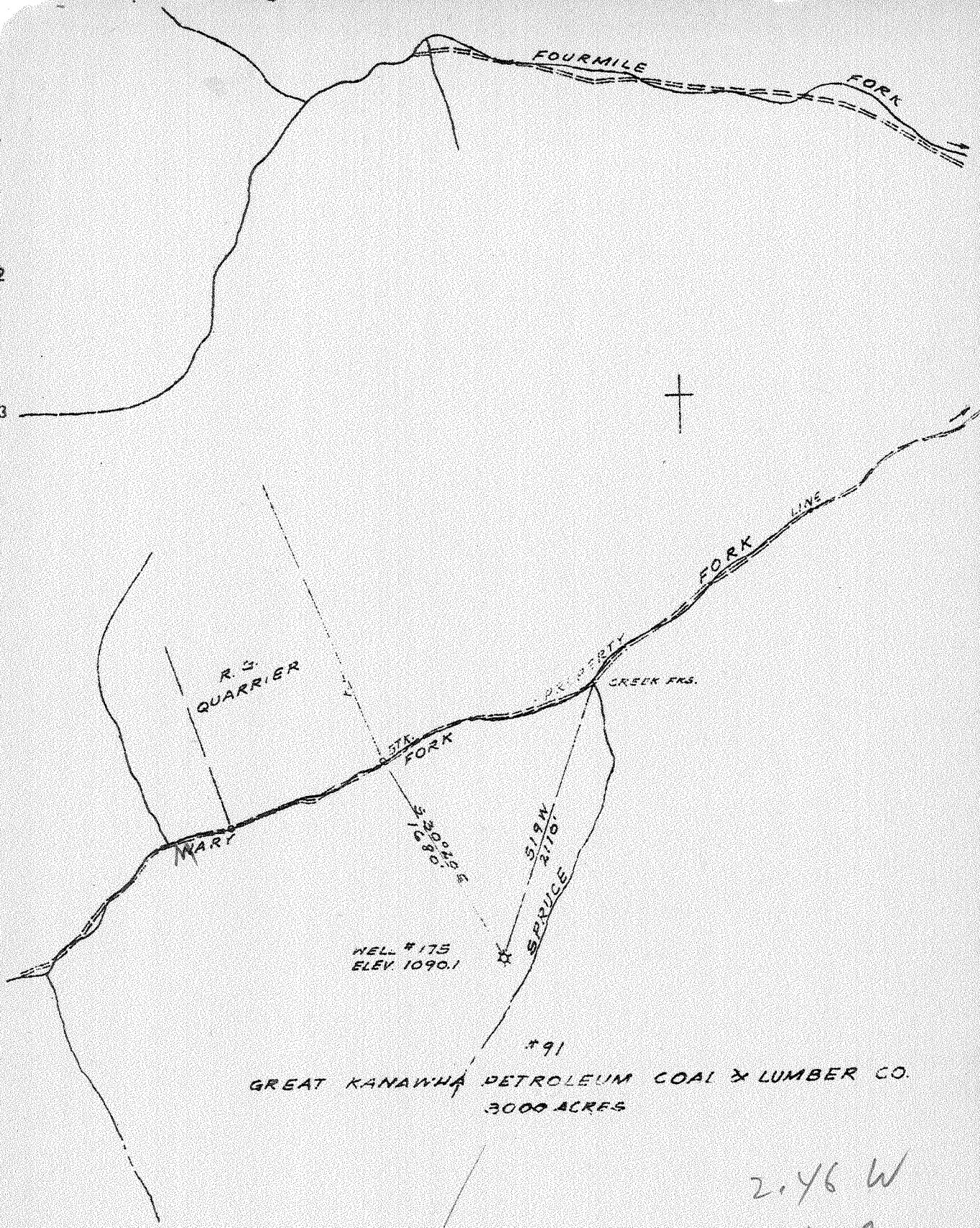


Latitude 38 15

Longitude 81 35



GREAT KANAWHA PETROLEUM COAL & LUMBER CO.
3000 ACRES

2.46 W
3.11 Q

DEC - 6 1939

New Location
Drs. Deeper...
Abandonment X

Company THE OWENS, LIBBEY-OWENS GAS DEPT.
 Address BOX 1375 CHARLESTON W. VA.
 Firm GREAT KANAWHA PETROLEUM COAL & LBR. CO.
 Tract _____ Acres 3000 Lease No. 91
 Well (Farm) No. 19 Serial No. 175
 Elevation (Spirit Level) 1090.1
 Quadrangle PEYTONA
 County KANAWHA District LOUDON
 Engineer T. H. C. ...
 Engineer's Registration No. 269
 File No. _____ Drawing No. _____
 Date 10-16-39 Scale 1"=1000'

STATE OF WEST VIRGINIA
DEPARTMENT OF MINES
OIL AND GAS DIVISION
CHARLESTON

WELL LOCATION MAP
FILE NO. KAN-283 A

+ Denotes location of well on United States Topographic Maps, scale 1 to 62,500. latitude and longitude lines being represented by border lines as shown.

- Denotes one inch spaces on border line of original tracing.

Loudon District, Kanawha County, W. Va.

By The Owens, Libbey-Owens Gas Dept., Box 1375, Charleston, W. Va.

Abandoned under permit Ken-.....-A.

On 3000 acres, on Lens Creek.

Elevation, 1089.6' L.

Surface and minerals owned by Great Kan. Petroleum, Coal, & Lumber Co., Box 2, Shamokin, Pa.

Drilling commenced August 4, 1924; completed, Oct. 5, 1924.

Volume, 90,000 cu. ft.

Rock pressure, 102 lbs.

Salt water at 945 and 1136'.

10" casing, 455'; 8" casing, 1026' (pulled); 6" casing, 1427' (388' left in);
2" tubing, 1637'.

Coal was encountered at 30-33, 272-276, 436-440, and 760-762'.

Anchor packer, 6" x 2, set at 1480'.

Perf. top, 1520; perf. bot., 1525'.

Gas well. Abandonment reported to Dept. of Mines Oct. 12, 1939.

Record to RCT from Mrs. Griffith December 1, 1939.

	Top.	Bottom.
Clay	0	18
Sand	18	30
Coal	30	33
Sand	33	85
Slate	85	215
Sand	215	272
Coal	272	276
Sand	276	327
Slate	327	335
Sand	335	420
Slate	420	436
Coal	436	440
Sand	440	490
Slate	490	575
Sand	575	740
Lime shells	740	755
Sand	755	760
Coal	760	762
Slate and shells	762	810
Sand	810	825
Slate	825	835
Sand	835	875
Slate	875	878
Sand	878	910
Lime	910	940
Sand (water, 945')	940	1005
Slate	1005	1010
Black lime	1010	1060
Slate	1060	1070
Lime	1070	1085
Slate	1085	1090
Lime shells	1090	1120
Salt Sand (gas show, 1136', and water)	1120	1265
Slate	1265	1270
Maxton Sand	1270	1285
Slate	1285	1330
Little Lime	1330	1375

(OVER)

GREAT KAN. PIETR. COAL & LUMBR. CO. NO. 175 WELL (Continued).

	Top.	Bottom.
Slate	1375	- 1380
Black lime	1380	- 1396
Pencil Cave	1396	- 1402
Big Lime (gas, 1497-1499', 74,000 cu. ft.; gas, 1525-1530', 105,000 cu. ft.)	1402	- 1585
Big Injun Sand	1585	- 1630
Slate	1630	- 1637
Total depth		1637

WEST VIRGINIA DEPARTMENT OF MINES
OIL AND GAS DIVISION

778

WELL RECORD

Permit No. KAN-283-A

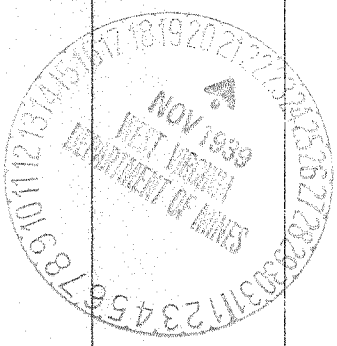
Oil or Gas Well Gas Well
(Kind)

Company THE OWENS, LIBBEY-OWENS GAS DEPARTMENT
Address P. O. BOX 1375, Charleston, W. Va.
Farm Great Kan. Petr. Coal & Lmbr. Co. Acres 3000
Location (waters) Lens Creek
Well No. 175 Elev. 1089.6
District Loudon County Kanawha
The surface of tract is owned in fee by Great Kan. Petroleum
Coal & Lumber Co. Address Box 2, Shamokin, Pa.
Mineral rights are owned by Same
Address _____
Drilling commenced August 4, 1924
Drilling completed Oct. 5, 1924
Date shot _____ Depth of shot _____
Open Flow /10ths Water in _____ Inch
/10ths Merc. in _____ Inch
Volume 90,000 Cu. Ft.
Rock Pressure 102 lbs. _____ hrs.
Oil _____ bbls., 1st 24 hrs.
Fresh water _____ feet _____ feet
Salt water 945 feet 1136 feet

Casing and Tubing	Used in Drilling	Left in Well	Packers
Size			
16			Kind of Packer
13			<u>Anchor</u>
10	<u>455'</u>	<u>455'</u>	Size of
8 3/4	<u>1026'</u>		<u>6 5/8" x 2"</u>
6 5/8	<u>1427'</u>	<u>338'</u>	Depth set
5 3/16			<u>1480'</u>
3			Perf. top <u>1520'</u>
2	<u>1637'</u>	<u>1637'</u>	Perf. bottom <u>1525'</u>
Liners Used			Perf. top _____
			Perf. bottom _____

CASING CEMENTED _____ SIZE _____ No. FT. _____ Date _____
COAL WAS ENCOUNTERED AT 30 FEET 36 INCHES
272 FEET 48 INCHES 436 FEET 48 INCHES
760 FEET 24 INCHES _____ FEET _____ INCHES

Formation	Color	Hard or Soft	Top	Bottom	Oil Gas or Water	Depth Found	Remarks
Clay			0	18			
Sand			18	30			
Coal			30	33			
Sand			33	85			
Slate			85	215			
Sand			215	272			
Coal			272	276			
Sand			276	327			
Slate			327	335			
Sand			335	420			
Slate			420	436			
Coal			436	440			
Sand			440	490			
Slate			490	575			
Sand			575	740			
Lime Shells			740	755			
Sand			755	760			
Coal			760	762			
Slate & Shells			762	810			
Sand			810	825			
Slate			825	835			
Sand			835	875			
Slate			875	878			
Sand			878	910			
Lime			910	940			
Sand			940	1005	Water	945'	
Slate			1005	1010			
Black Lime			1010	1060			
Slate			1060	1070			
Lime			1070	1085			
Slate			1085	1090			
Lime Shells			1090	1120			
Salt Sand			1120	1265	Gas Show & water	1136'	
Slate			1265	1270			
Maxton Sand			1270	1285			
Slate			1285	1330			
Little Lime			1330	1375			
Slate			1375	1380			
Black Lime			1380	1396			
Pencil Cave			1396	1402			
Big Line			1402	1585	Gas	1497-1499'	74,000
					"	1525-1530'	105,000



Formation	Color	Hard or Soft	Top	Bottom	Oil, Gas or Water	Depth Found	Remarks
Big Injun Sand Slate			1585 1630	1630 1637 1637			
Total depth							

Date October 12th, 1939

APPROVED THE OWENS, LIBBEY-OWENS GAS DEPT., Owner

By A. P. Fisher GEOLOGIST
(Title)