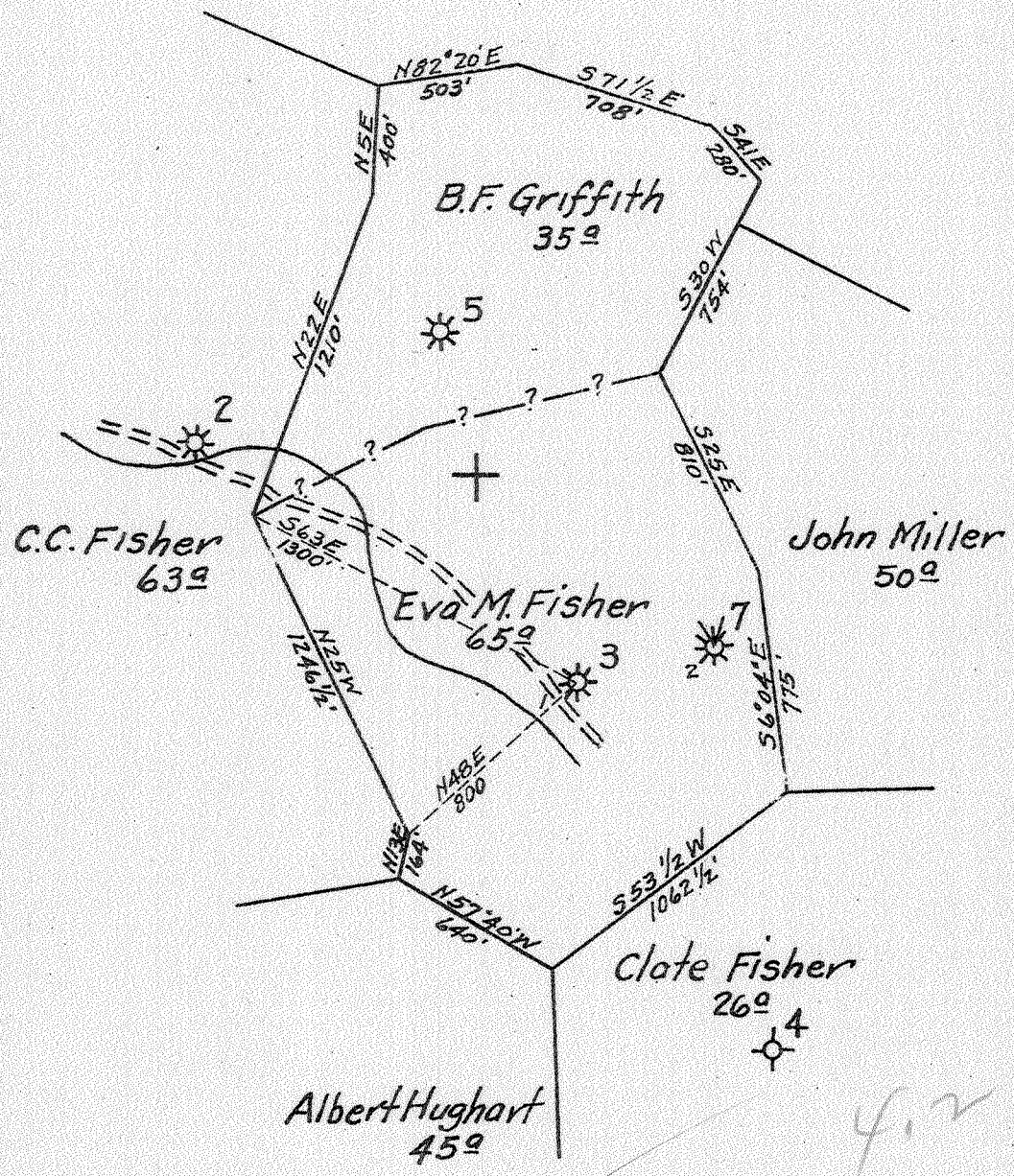


Latitude 38 35'

Longitude 81 30'

Ahaz Spencer
209^a



New Location...
 Drill Deeper...
 Abandonment...

GM
 Revised

OCT - 5 1941

Note: - Well tie-in scaled from farm map

Company Brawley-Reid Oil & Gas Co.
 Address Charleston, W. Va.
 Farm Eva M. Fisher
 Tract _____ Acres 65 Lease No. 12
 Well (Farm) No. 1 Serial No. 3
 Elevation (Spirit Level) 837' Bar
 Quadrangle Kenna
 County Kanawha District Poca
 Engineer Louis H. Talbot
 Engineer's Registration No. 412
 File No. _____ Drawing No. _____
 Date 9-8-41 Scale 1" = 660'

STATE OF WEST VIRGINIA
 DEPARTMENT OF MINES
 OIL AND GAS DIVISION
 CHARLESTON

WELL LOCATION MAP
 FILE NO. KAN-334A

+ Denotes location of well on United States Topographic Maps, scale 1 to 62,500, latitude and longitude lines being represented by border lines as shown.

- Denotes one inch spaces on border line of original tracing.

IMPERIAL TRADING CLOTH K & E CO., N. Y.
 EVA M. FISHER No. 1 (3) - BRAWLEY-REID OIL & GAS CO. - KAN-334-A (Revised)