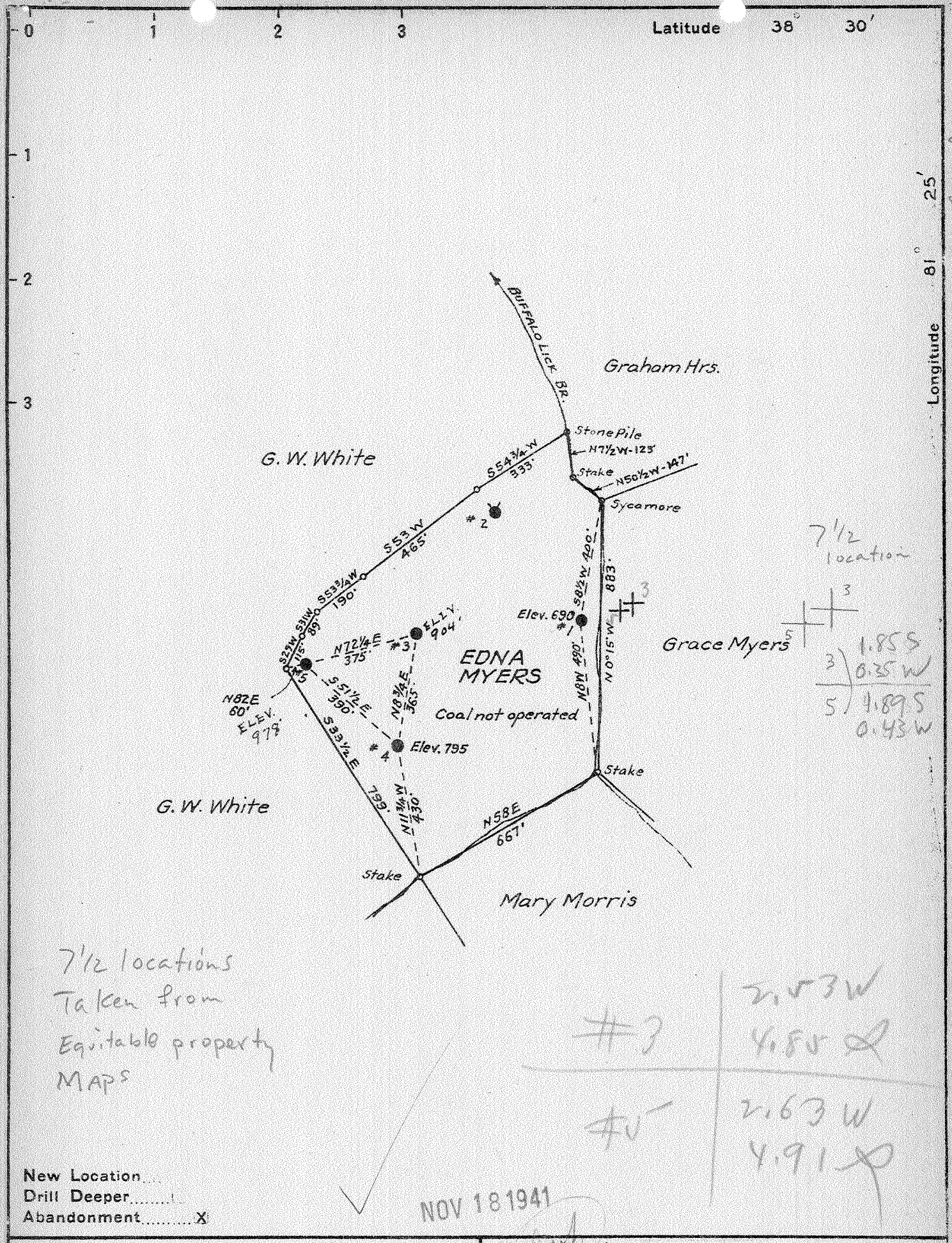


382730



NOV 18 1941

New Location.....  
 Drill Deeper.....  
 Abandonment..... X

Company W. S. EDWARDS OIL & GAS CO.  
 Address CHARLESTON, W. VA.  
 Farm EDNA MYERS  
 Tract \_\_\_\_\_ Acres 21 Lease No. \_\_\_\_\_  
 Well (Farm) No. 1 & 4 Serial No. \_\_\_\_\_  
 Elevation (BAROMETER) AS SHOWN  
 Quadrangle CLENDENIN  
 County KANAWHA District ELK  
 Engineer G. A. Cunningham  
 Engineer's Registration No. 659  
 File No. \_\_\_\_\_ Drawing No. \_\_\_\_\_  
 Date OCT. 1, 1941 Scale 1" = 400'

STATE OF WEST VIRGINIA  
 DEPARTMENT OF MINES  
 OIL AND GAS DIVISION  
 CHARLESTON

WELL LOCATION MAP  
 FILE NO. KAN-339A & 340A  
(31343A & 344 A-5)

+ Denotes location of well on United States Topographic Maps, scale 1 to 62,500, latitude and longitude lines being represented by border lines as shown.  
 - Denotes one inch spaces on border line of original tracing.

EDNA MYERS Nos. 338-5 - W. S. EDWARDS OIL & GAS CO. - KAN-343-A  
 KAN-344-A

Elk District, Kanawha County, W. Va.

By W. J. Hightower, Spec. Receiver, Charleston, W. Va.

Abandoned under permit Kan-3104-A.

On 21 acres, on Buffalolick Branch.

Elevation, 978' L.

Surface owned by Ira Myers, Blue Creek, W. Va., and minerals by

W. J. Hightower, Special Receiver, Charleston, W. Va.

Drilling commenced March, 1912; completed, April, 1912.

Shot Sept. 25, 1912, at 1991-2006'.

Oil, no record.

6 $\frac{3}{8}$ " casing, 1760'; 5 $\frac{3}{8}$ " , 1800'; 2" tubing, 2006';

6 $\frac{3}{8}$ " show; 5 $\frac{3}{8}$ " hook wall packer.

Coal was encountered at 590-595'.

Oil well. Abandonment reported to Dept. of Mines (filed Nov. 5, 1941).

Record to ROT from Mrs. Griffith Dec. 9, 1941. Old File No. 927.

	Top.	Bottom.
Conductor	0	16
Slate	16	590
Coal	590	595
Slate	595	775
Lime	775	825
Sand	825	915
Slate	915	1025
Salt Sand	1025	1515
Shale	1515	1585
Lime	1585	1625
Slate	1625	1655
Lime	1655	1670
Slate	1670	1690
Lime	1690	1713
Cave	1713	1733
Big Lime	1733	1910
Slate and shells	1910	1991
Top Sand	1991	2006
Total depth		2006

STATE OF WEST VIRGINIA  
DEPARTMENT OF MINES  
OIL AND GAS DIVISION

927

WELL RECORD

Permit No. 344-A

Oil or Gas Well Oil  
(Kind)

Company W. J. Hightower, Spec. Receiver  
Address Charleston, W. Va.  
Farm Edna Myers Acres 21  
Location (waters) Buffalo Lick Branch  
Well No. 5 Elev. 979  
District Rik County Kanawha  
The surface of tract is owned in fee by Ira Myers  
Blue Creek Address W. Va.  
Mineral rights are owned by W. J. Hightower  
Special Receiver Address Charleston, W. Va.  
Drilling commenced March 1912  
Drilling completed April 1912  
Date shot Sept. 25, 1912 Depth of shot 1991-2006  
Open Flow /10ths Water in \_\_\_\_\_ Inch  
/10ths Merc. in \_\_\_\_\_ Inch  
Volume \_\_\_\_\_ Cu. Ft.  
Rock Pressure \_\_\_\_\_ lbs. \_\_\_\_\_ hrs.  
Oil No Record \_\_\_\_\_ bbls., 1st 24 hrs.  
Fresh water \_\_\_\_\_ feet \_\_\_\_\_ feet  
Salt water \_\_\_\_\_ feet \_\_\_\_\_ feet

Casing and Tubing	Used in Drilling	Left in Well	Packers
Size			Kind of Packer
16			<u>6 5/8" shoe</u>
13			Size of _____
10			<u>6 5/16" Hookwall</u>
8 1/4			Depth set
6 5/8	<u>1760</u>	<u>1760</u>	
5 3/16	<u>None</u>	<u>1800</u>	
3			Perf. top
2 tubing		<u>2006</u>	Perf. bottom
Liners Used	<u>None</u>	<u>None</u>	Perf. top
			Perf. bottom

CASING CEMENTED \_\_\_\_\_ SIZE \_\_\_\_\_ No. Ft. \_\_\_\_\_ Date \_\_\_\_\_  
COAL WAS ENCOUNTERED AT 590 FEET \_\_\_\_\_ INCHES  
\_\_\_\_\_ FEET \_\_\_\_\_ INCHES \_\_\_\_\_ FEET \_\_\_\_\_ INCHES  
\_\_\_\_\_ FEET \_\_\_\_\_ INCHES \_\_\_\_\_ FEET \_\_\_\_\_ INCHES

Formation	Color	Hard or Soft	Top	Bottom	Oil, Gas or Water	Depth Found	Remarks
Conductor				<u>16</u>			
Slate			<u>16</u>	<u>590</u>			
Coal			<u>590</u>	<u>595</u>			
Slate			<u>595</u>	<u>775</u>			
Lime			<u>775</u>	<u>825</u>			
Sand			<u>825</u>	<u>915</u>			
Slate			<u>915</u>	<u>1025</u>			
Salt Sand			<u>1025</u>	<u>1515</u>			
Shale			<u>1515</u>	<u>1585</u>			
Lime			<u>1585</u>	<u>1625</u>			
Slate			<u>1625</u>	<u>1655</u>			
Lime			<u>1655</u>	<u>1670</u>			
Slate			<u>1670</u>	<u>1690</u>			
Lime			<u>1690</u>	<u>1715</u>			
Cave			<u>1715</u>	<u>1733</u>			
Big Lime			<u>1733</u>	<u>1910</u>			
Slate & Shells			<u>1910</u>	<u>1991</u>			
Top Sand			<u>1991</u>	<u>2006</u>			
Total Depth				<u>2006</u>			

