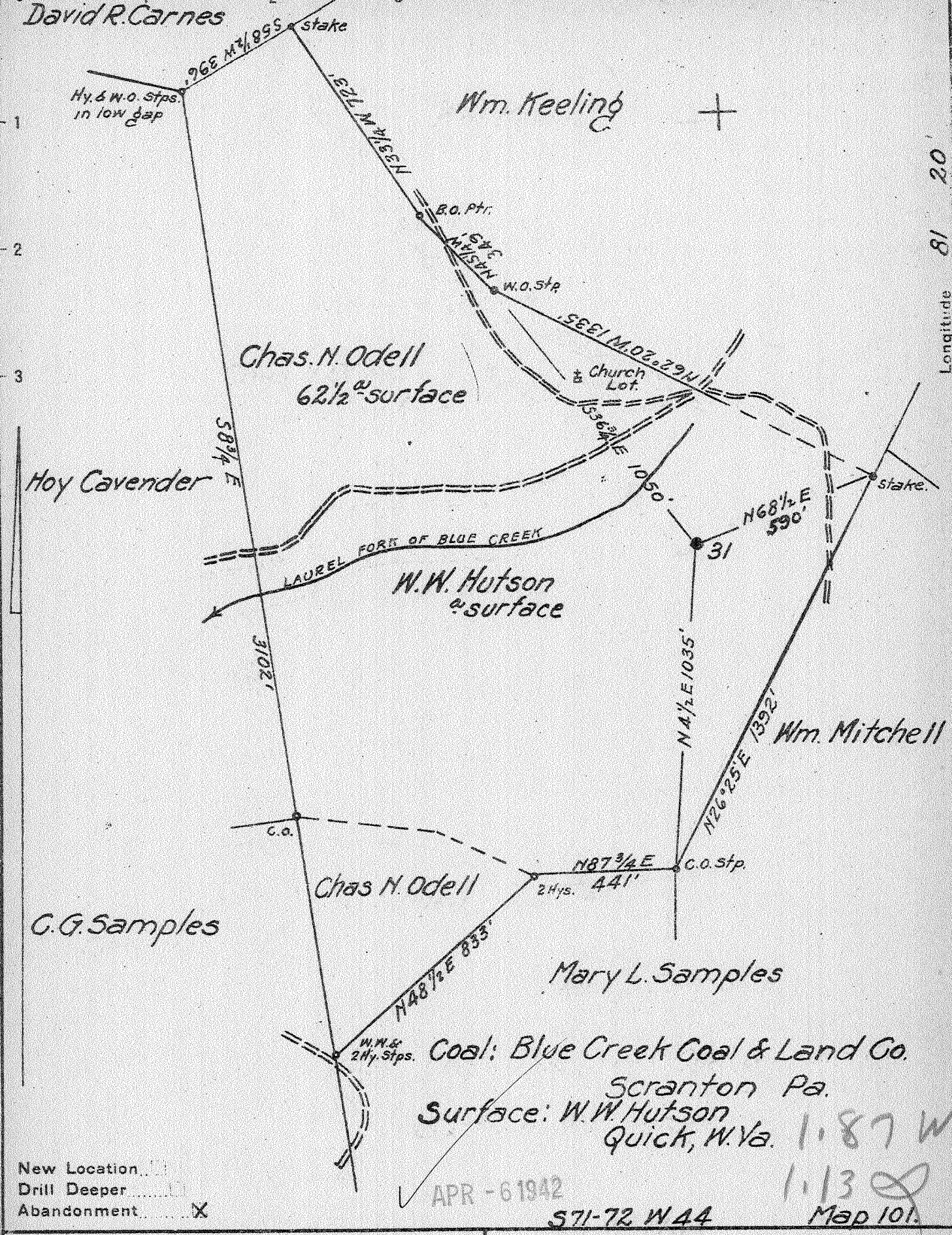


Latitude 38° 25'

Longitude 81° 20'



New Location
 Drill Deeper
 Abandonment

APR - 6 1942

571-72 W 44

1.87 W
1.13
Map 101

Company	South Penn Natural Gas Co.
Address	Parkersburg, W. Va.
Farm	Blue Creek Tract
Tract	Acres 29768 Lease No. 57822
Well (Farm) No.	31 Serial No.
Elevation (Spirit Level)	1114.02
Quadrangle	Clendenin
County	Kanawha District Elk
Engineer	E. C. Tabler
Engineer's Registration No.	
File No.	Drawing No.
Date	Jan. 13, 1942 Scale 1" = 400'

STATE OF WEST VIRGINIA
 DEPARTMENT OF MINES
 OIL AND GAS DIVISION
 CHARLESTON

WELL LOCATION MAP
 FILE NO. KAN-356-A

+ Denotes location of well on United States Topographic Maps, scale 1 to 62,500, latitude and longitude lines being represented by border lines as shown.

- Denotes one inch spaces on border line of original tracing.

6-6 2 17

BLUE CREEK TRACT No. 31 - SOUTH PENN NAT. GAS CO. - KAN-356-A

STATE OF WEST VIRGINIA
DEPARTMENT OF MINES
OIL AND GAS DIVISION

930

WELL RECORD

Permit No. 356-A

Oil or Gas Well OIL
(KIND)

Company South Penn Natural Gas Company
Address Union Trust Bldg. Parkersburg, W. Va.
Farm Blue Creek Tract Acres 29768
Location (waters) Blue Creek, etc.,
Well No. 31 Elev. 1114.02
District Elk County Kanawha
The surface of tract is owned in fee by W. W. Hutson
Address Quick, W. Va.
Mineral rights are owned by Blue Creek Coal & Land
Company Address Scranton, Pa.
Drilling commenced Nov. 17, 1913
Drilling completed Jan. 15, 1914
Date Shot 1-20-14 Weir 20 ft.
12-17-34 Well 40 ft.
Widr --
Open Flow /10ths Water in -- Inch
/10ths Merc. in -- Inch
Volume -- Cu. Ft.
Rock Pressure -- lbs. -- hrs.
Oil 5 bbls., 1st 24 hrs.
Fresh water -- feet -- feet
Salt water 1300 feet -- feet

Casing and Tubing	Used in Drilling	Left in Well	Packers
Size			
16			Kind of Packer <u>--</u>
13			<u>--</u>
10			Size of <u>--</u>
8 1/4	<u>574' 9"</u>		<u>--</u>
6 5/8	<u>1803' 4"</u>		Depth set <u>--</u>
5 3/16			<u>--</u>
3			Perf. top <u>--</u>
2			Perf. bottom <u>--</u>
Liners Used			Perf. top <u>--</u>
Cond. <u>16'</u>			Perf. bottom <u>--</u>

CASING CEMENTED -- SIZE -- No. Ft. -- Date --
COAL WAS ENCOUNTERED AT 450 FEET 60 INCHES
502 FEET 36 INCHES -- FEET -- INCHES
-- FEET -- INCHES -- FEET -- INCHES

Formation	Color	Hard or Soft	Top	Bottom	Oil, Gas or Water	Depth Found	Remarks
Sand			16	200	Water	1300	Hole full
Slate			200	450			
Coal			450	455			
Sand			455	502			
Coal			502	505			
Slate			505	840			
Sand			840	900			
Slate			900	930			
Sand			930	1030			
Slate			1030	1040			
Salt Sand			1040	1330			
Slate			1330	1424			
2nd Salt Sand			1424	1576	Oil	2145	
Red Rock			1576	1630			
Slate			1630	1685			
Maxon Sand			1685	1705			
Slate			1705	1730			
Little Lime			1730	1770			
Pencil Cave			1770	1775			
Big Lime			1775	1940			
Red Rock			1940	2000			
Weir Sand			2000	2158			
Slate			2158	2170			
Total Depth				2170			

