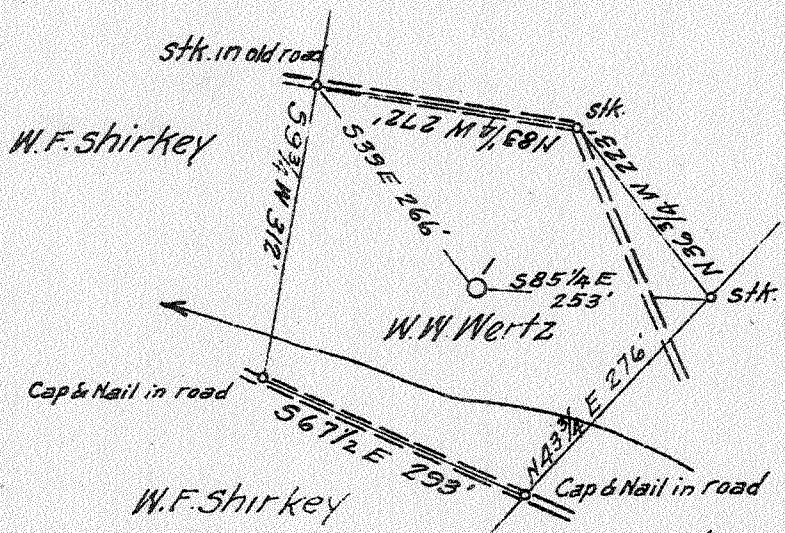


Benj. Slack



Chas. Hunt
Now
Virginian Gasoline & Oil Co.

Gen. & Sur. for
W.W. Wertz
Elkview, W. Va.

4,49W
1101 R

New Location
Drill Deeper
Abandonment

AUG 10 1942 571 W 51 Map 100

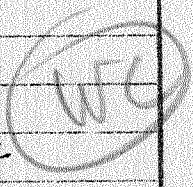
Company South Penn Natural Gas Co.
 Address Parkersburg, W. Va.
 Farm W. W. Wertz.
 Tract _____ Acres 10 Lease No. 62784
 Serial No. 65687
 Well (Farm) No. 1
 Elevation (Spirit Level) 640.35
 Quadrangle Clendenin
 County Kanawha District Elk
 Engineer E.C. Tabler
 Engineer's Registration No. _____
 File No. _____ Drawing No. _____
 Date July 14, 1942 Scale 1" = 200'

STATE OF WEST VIRGINIA
DEPARTMENT OF MINES
OIL AND GAS DIVISION
CHARLESTON

WELL LOCATION MAP
FILE NO. KAN-367-A

+ Denotes location of well on United States Topographic Maps, scale 1 to 62,500, latitude and longitude lines being represented by border lines as shown.

- Denotes one inch spaces on border line of original tracing.



6-6-217

STATE OF WEST VIRGINIA
DEPARTMENT OF MINES
OIL AND GAS DIVISION

940

WELL RECORD

Permit No. 367A

Oil or Gas Well OIL
(KIND)

Company South Penn Natural Gas Company
Address Union Trust Bldg. Parkersburg, W. Va.
Farm W. W. Wertz Acres 10
Location (waters) Indian Creek
Well No. 1 Elev. 640.35
District Elk County Kanawha
The surface of tract is owned in fee by W. W. Wertz
Address Elkview, W. Va.
Mineral rights are owned by Chloe Wertz
1422 Lee St. Address Charleston, W. Va.
Drilling commenced Dec. 5, 1912
Drilling completed Jan. 21, 1913
Date Shot 2-21-13 From xxx Squaw to xx
With 30 qts.

Casing and Tubing	Used in Drilling	Left in Well	Packers
Size			Kind of Packer
16			-
13			-
10	26'		Size of
8 1/4	360'		-
6 5/8	1422'		Depth set
5 3/16			-
3			Perf. top
2			Perf. bottom
Liners Used			Perf. top
			Perf. bottom

Open Flow /10ths Water in. --- Inch
/10ths Merc. in. --- Inch
Volume --- Cu. Ft.
Rock Pressure --- lbs. --- hrs.
Oil 15 bbls., 1st 24 hrs.
Fresh water -- feet -- feet
Salt water -- feet -- feet

CASING CEMENTED - SIZE - No. Ft. - Date -
COAL WAS ENCOUNTERED AT 60 FEET 36 INCHES
248 FEET 60 INCHES - FEET - INCHES
- FEET - INCHES - FEET - INCHES

Formation	Color	Hard or Soft	Top	Bottom	Oil, Gas or Water	Depth Found	Remarks
Quick Sand				25			
Sand			25	60			
Coal			60	63			
Sand			63	105			
Slate			105	168			
Sand			168	248			
Coal			248	253			
Slate			253	310			
Sand			310	360			
Slate			360	378			
Sand			378	415			
Slate & Shells			415	690			
Salt Sand			690	1265			
Lime			1265	1285			
Slate			1285	1314			
Maxon Sand			1314	1358			
Little Lime			1358	1410			
Pencil Cave			1410	1416			
Big Lime			1416	1567			
Slate			1567	1581			
Red Rock			1581	1601			
Slate & Shells			1601	1665			
Squaw Sand			1665	1675			
					Gas	1665	
					Oil	1669	
Slate			1675	1683			
Sand			1683	1688			
Slate & Shells			1688	1750			
Sand			1750	1755			
Slate			1755	1774			
Weir Sand			1774	1835			
Slate			1835	1836			
Total Depth				1836			
DRY in Weir - Filled back to				1675			

