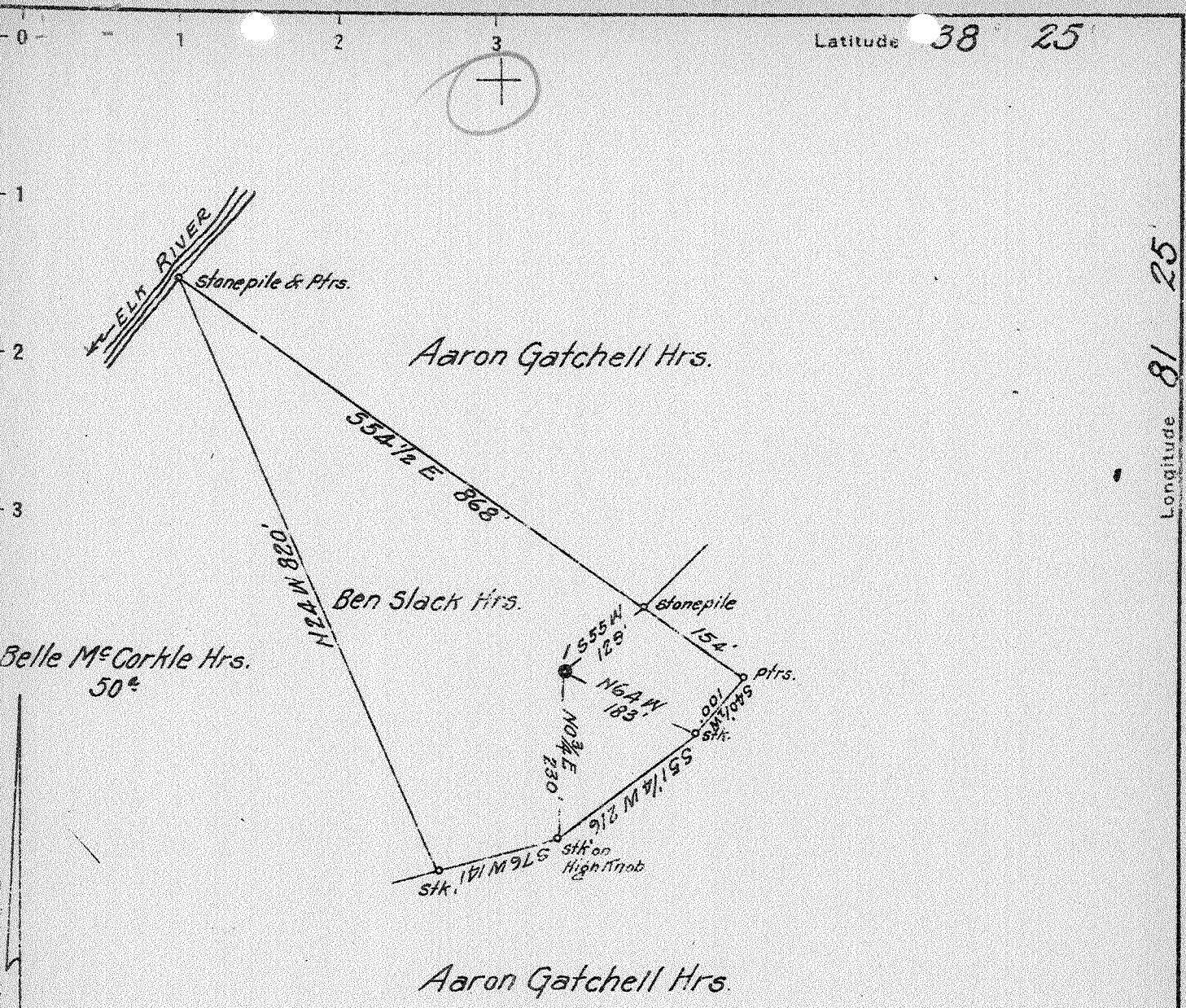


Latitude 38 25

Longitude 81 25



Belle M^c Corkle Hrs.
50'

Aaron Gatchell Hrs.

Ben Slack Hrs.

Aaron Gatchell Hrs.

Surface & Coal:
B.L. Slack
Tuscon, Arizona.

New Location
Drill Deeper
Abandonment

AUG 10 1942

570-71 W50-51 Map 100.

Company South Penn Natural Gas Co.
 Address Parkersburg, W. Va.
 Farm Ben Slack Hrs.
 Tract _____ Acres 5 Lease No. 65515
 Well (Farm) No. 1 Serial No. _____
 Elevation (Spirit Level) 933.15
 Quadrangle Clendenin
 County Kanawha District Elk
 Engineer E.C. Tabler
 Engineer's Registration No. _____
 File No. _____ Drawing No. _____
 Date July 15, 1942 Scale 1" = 200'

STATE OF WEST VIRGINIA
DEPARTMENT OF MINES
OIL AND GAS DIVISION
CHARLESTON

WELL LOCATION MAP
FILE NO. KAN-368-A

+ Denotes location of well on United States Topographic Maps, scale 1 to 62,500. latitude and longitude lines being represented by border lines as shown.
- Denotes one inch spaces on border line of original tracing.

BEN SLACK HEIRS NO, 1 - SOUTH PENN NAT, GAS CO, KAN-368A

STATE OF WEST VIRGINIA
DEPARTMENT OF MINES
OIL AND GAS DIVISION

939

WELL RECORD

Permit No. 368 A

Oil or Gas Well OIL
(KIND)

Company South Penn Natural Gas Company
Address Union Trust Bldg. Parkersburg, W. Va.
Farm Ben Slack Hrs. Acres 5
Location (waters) Elk River
Well No. 1 Elev. 933.15
District Elk County Kanawha
The surface of tract is owned in fee by B.L. Slack
Box 1924, Address Tucson, Arizona
Mineral rights are owned by L.C. Slack et al.
A. D. No. 1, Address Vinton, Ohio.
Drilling commenced Sept. 6, 1912
Drilling completed Oct. 21, 1912
Date Shot See Below From To
With -----
Open Flow /10ths Water in ----- Inch
/10ths Merc. in ----- Inch
Volume ----- Cu. Ft.
Rock Pressure ----- lbs. ----- hrs.
Oil 50 bbls., 1st 24 hrs.
Fresh water ----- feet ----- feet
Salt water 1145 feet ----- feet

Casing and Tubing	Used in Drilling	Left in Well	Packers
Size			
16			Kind of Packer. --
13			--
10			Size of --
8 1/4	630'		--
6 5/8	1747'		Depth set --
5 3/16	1784' 1"		--
3			Perf. top. --
2			Perf. bottom. --
Liners Used			Perf. top. --
Cond.	16'		Perf. bottom. --

CASING CEMENTED. SIZE No. Ft. Date
COAL WAS ENCOUNTERED AT 440 FEET 60 INCHES
FEET INCHES FEET INCHES
FEET INCHES FEET INCHES

Formation	Color	Hard or Soft	Top	Bottom	Oil, Gas or Water	Depth Found	Remarks
Mud, Slate & Shells				440			
Coal			440	445			
Sand			445	550			
Slate & shells			550	750			
Sand			750	830			
Slate & Shells			830	1020			
Salt Sand			1020	1530			
Slate & Lime			1530	1640	Water	1145	Hole Full
Maxon Sand			1640	1665			
Little Lime			1665	1695			
Slate & Shells			1695	1715			
Pencil			1715	1723			
Big Lime			1723	1880			
Red Rock Slate & Shells			1880	1975			
Squaw Sand			1975	1988	Gas & Oil	1978	
Total Depth				1988			
DRILLED DEEPER:							
Commenced drilling			1988				
Slate			1988	2040			
Slate & Shells			2040	2060			
Slate			2060	2085			
Slate & Shells			2085	2093			
Weir Sand			2093	2145			
Slate			2145	2147	Oil	2094-2098	Light show
					Oil	2120-2122	" "
					Oil	2140-2143	" "
Total Depth				2147			

