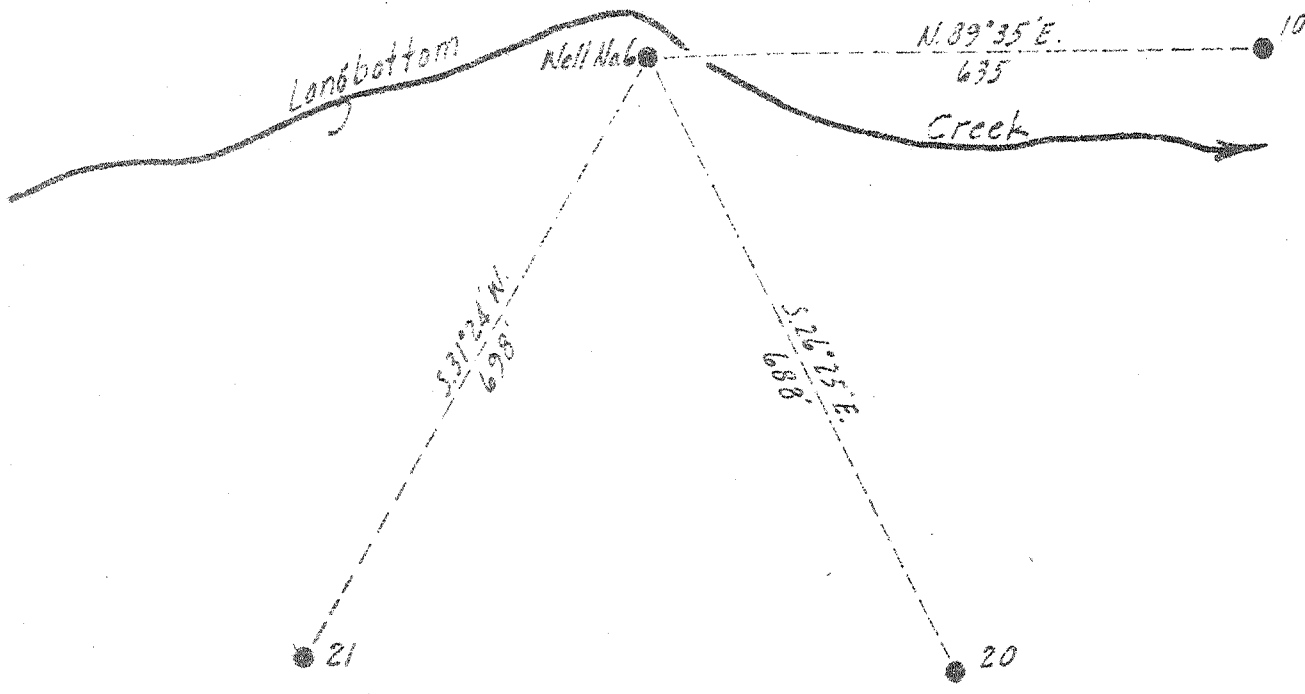


Williams Coal Company

12000 ±



3.72 W
2.19

New Location
 Drill Deeper
 Abandonment

✓ APR 15 1946

Company The Pure Oil Company
 Address Newark, Ohio
 Farm Williams Coal Company
 Tract _____ Acres 12000 Lease No. 5012
 Well (Farm) No. 6 Serial No. 207
 Elevation (Spirit Level) 950
 Quadrangle Montgomery **WC**
 County Kanawha District Cabin Creek
 Engineer J. B. Hunter
 Engineer's Registration No. Ohio-2912
 File No. _____ Drawing No. _____
 Date April 3, 1946 Scale 1" = 200'

STATE OF WEST VIRGINIA
 DEPARTMENT OF MINES
 OIL AND GAS DIVISION
 CHARLESTON

WELL LOCATION MAP
 FILE NO. KAN-443-A

+ Denotes location of well on United States Topographic Maps, scale 1 to 62,500, latitude and longitude lines being represented by border lines as shown.

- Denotes one inch spaces on border line of original tracing.



STATE OF WEST VIRGINIA
DEPARTMENT OF MINES
OIL AND GAS DIVISION

1137

WELL RECORD

Permit No. 443-A Oil or Gas Well _____ (KIND)

Company The Pure Oil Company
Address Box 551 - Newark, Ohio
Farm Williams Coal Company Acres 12,000
Location (waters) Cabin Creek
Well No. 6 Elev. 950
District Cabin Creek County Kanawha
The surface of tract is owned in fee by Shonk Land Company
D. C. Shonk Address Dawes, W. Va.
Mineral rights are owned by Shonk Land Company
D. C. Shonk Address Dawes, W. Va.
Drilling commenced June 10, 1915
Drilling completed August 21, 1915
Date Shot Aug. 1915 From _____ To _____
With 70 quarts

Casing and Tubing	Used in Drilling	Left in Well	Packers
Size			
16			Kind of Packer _____
13			
10		<u>414</u>	Size of _____
8 1/4		<u>1577</u>	
6 5/8		<u>1953</u>	Depth set _____
5 3/16			
3			Perf. top _____
2			Perf. bottom _____
Liners Used			Perf. top _____
			Perf. bottom _____

Open Flow /10ths Water in _____ Inch
/10ths Merc. in _____ Inch
Volume _____ Cu. Ft.
Rock Pressure _____ lbs. _____ hrs.
Oil 49 bbls., 1st 24 hrs.
Fresh water _____ feet _____ feet
Salt water _____ feet _____ feet

CASING CEMENTED _____ SIZE _____ No. Ft. _____ Date _____
COAL WAS ENCOUNTERED AT 236 FEET 48 INCHES
435 FEET 60 INCHES FEET INCHES
FEET INCHES FEET INCHES

Formation	Color	Hard or Soft	Top	Bottom	Oil, Gas or Water	Depth Found	Remarks
Gravel	yellow		0	50	Water	20	H. F.
Sand	white		30	70	Water	50	H. F.
Slate	black		70	75			
Sand	white		75	150			
Slate	black		150	236			
Coal	black		236	240			
Sand	white		240	265			
Slate	black		265	290			
Sand	white		290	300			
Slate	black		300	400			
Lime	white		400	430			
Slate	black		430	435			
Coal	black		435	440			
Sand	white		440	480			
Slate	black		480	580			
Sand	white		560	610			
Slate	black		610	690			
Sand	white		690	720			
Slate	white		720	750			
Sand	white		750	785			
Slate	black		785	790			
Sand	white		790	905			
Lime	black		905	925			
Slate	black		925	975			
SALT SAND	white		975	1305	Water	1100	H.F.
Shells	black		1305	1434			
Rock	red		1434	1490			
Slate-Shells	white		1490	1825			
Pencil Cave	black		1825	1830			
Little Lime	black		1830	1875			
Lime, broken	black		1875	1910			
Pencil Cave	black		1910	1915			
BIG LIME	white		1915	2143			
BIG INJUN	red		2143	2175			
Slate Shells	white		2175	2542			
Shale	brown		2542	2562			
BERIA SAND	gray		2562	2606 1/2			
Lime	black		2606 1/2	2617			
Total depth			- 2617'				

