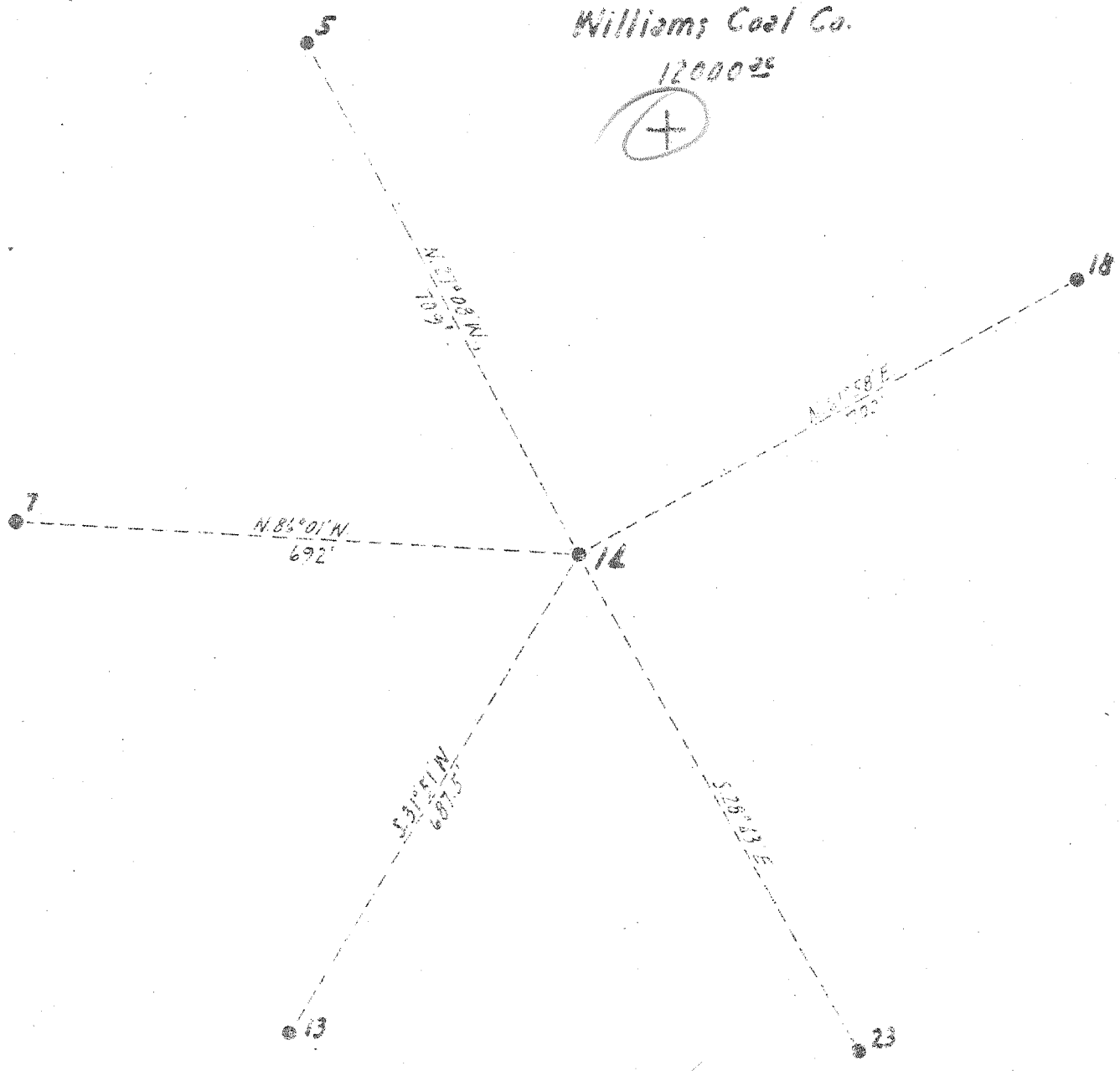


Williams Coal Co.

12000²⁵



New Location
 Drill Deeper
 Abandonment

✓ JAN 20 1947

3.21 W
 3.82 Q

1947

Company The Pure Oil Company
 Address Newark, Ohio
 Farm Williams Coal Co.
 Tract _____ Acres 12.500 Lease No. 50.2
 Well (Farm) No. 14 Serial No. 225
 Elevation (Spirit Level) 1685
 Quadrangle Montgomery **WC**
 County Kanawha District Cabin Creek
 Engineer J. H. [Signature]
 Engineer's Registration No. Ohio - 2912
 File No. _____ Drawing No. _____
 Date 12-20-46 Scale 1" = 200'

STATE OF WEST VIRGINIA
 DEPARTMENT OF MINES
 OIL AND GAS DIVISION
 CHARLESTON

WELL LOCATION MAP
 FILE NO. KAN-453-A

+ Denotes location of well on United States Topographic Maps, scale 1 to 52,500, latitude and longitude lines being represented by border lines as shown.

- Denotes one inch spaces on border line of original tracing.

5-6 140



1212

STATE OF WEST VIRGINIA
DEPARTMENT OF MINES
OIL AND GAS DIVISION

WELL RECORD

Permit No. 453-A

Oil or Gas Well Oil
(KIND)

Company The Pure Oil Company
Address Box 551 - Newark, Ohio
Farm Williams Coal Company Acres 12,000
Location (waters) Cabin Creek
Well No. 14 Elev. 1185
District Cabin Creek County Kanawha
The surface of tract is owned in fee by Shonk Land Company
Att. D. C. Shonk Address Dawes, W. Va.
Mineral rights are owned by Shonk Land Company
Att. D. C. Shonk Address Dawes, W. Va.
Drilling commenced October 28, 1915
Drilling completed January 1, 1916
Date Shot 1-7-16 From 3139' To 3154'
With 40 quarts glycerin

Casing and Tubing	Used in Drilling	Left in Well	Packers
Size			Kind of Packer
16			
13			
10	916'	916'	Size of
8 1/2	1890'	Pulled	
6 5/8	2509'	2509'	Depth set
5 3/16			
3			Perf. top
2			Perf. bottom
Liners Used			Perf. top
			Perf. bottom

Open Flow /10ths Water in _____ Inch
/10ths Merc. in _____ Inch
Volume _____ Cu. Ft.
Rock Pressure _____ lbs. _____ hrs.
Oil 64 bbls., 1st 24 hrs.
Fresh water _____ feet
Salt water _____ feet

CASING CEMENTED _____ SIZE _____ No. Ft. _____ Date _____
COAL WAS ENCOUNTERED AT 45 FEET 60 INCHES
146 FEET 48 INCHES 400 FEET 48 INCHES
650 FEET 26 INCHES 820 FEET 60 INCHES

Formation	Color	Hard or Soft	Top	Bottom	Oil, Gas or Water	Depth Found	Remarks
Clay	yellow		0	16			
Slate	black		16	45			
Coal	black		45	50			
Slate	black		50	146			
Coal	black		146	150			
Sand	yellow		150	300			
Slate	black		300	400			
Coal	black		400	404			
Sand	white		404	630			
Slate	black		630	650			
Coal	black		650	653			
Sand	white		653	750	Water	670'	2 bailers
Slate	black		750	820			
Coal	black		820	825			
Sand	white		825	900			
Coal	black		900	904			
Slate	black		904	1006			
Coal	black		1006	1010			
Shells-Slate	white		1010	1360			
Grampus Sand	yellow		1360	1460			
Slate	black		1460	1515			
SALT SAND	white		1515	1890	Water	1630	H. F.
Slate	black		1890	1930			
Sand	gray		1930	1950			
Shells	gray		1950	2015			
Rock	red		2015	2075			
Slate & Shells	black		2075	2200			
Rock	red		2200	2280			
Slate & Shells	black		2280	2360			
Slate Cave	black		2360	2370			
Little Lime	black		2370	2415			
Slate Cave	black		2415	2425			
Little Lime	black		2425	2470			
Slate Cave	black		2470	2475			
BIG LIME	white		2475	2700			
Slate	white		2700	2710			
INJUN SAND	red		2710	2740			
Slate & Shells	white		2740	3110			
Shale	brown		3110	3125			

Williams Coal Company No. 14

Formation	Color	Hard or Soft	Top	Bottom	Oil, Gas or Water	Depth Found	Remarks
BEREA SAND	white		3125	3155			
Lime	black		3155	3165			
TOTAL DEPTH	3165'						

Date December 27, 1946

APPROVED The Pure Oil Company, Owner
P. O. Box 551, Newark, Ohio
 By Hard Hills
 Division Superintendent (Title)