

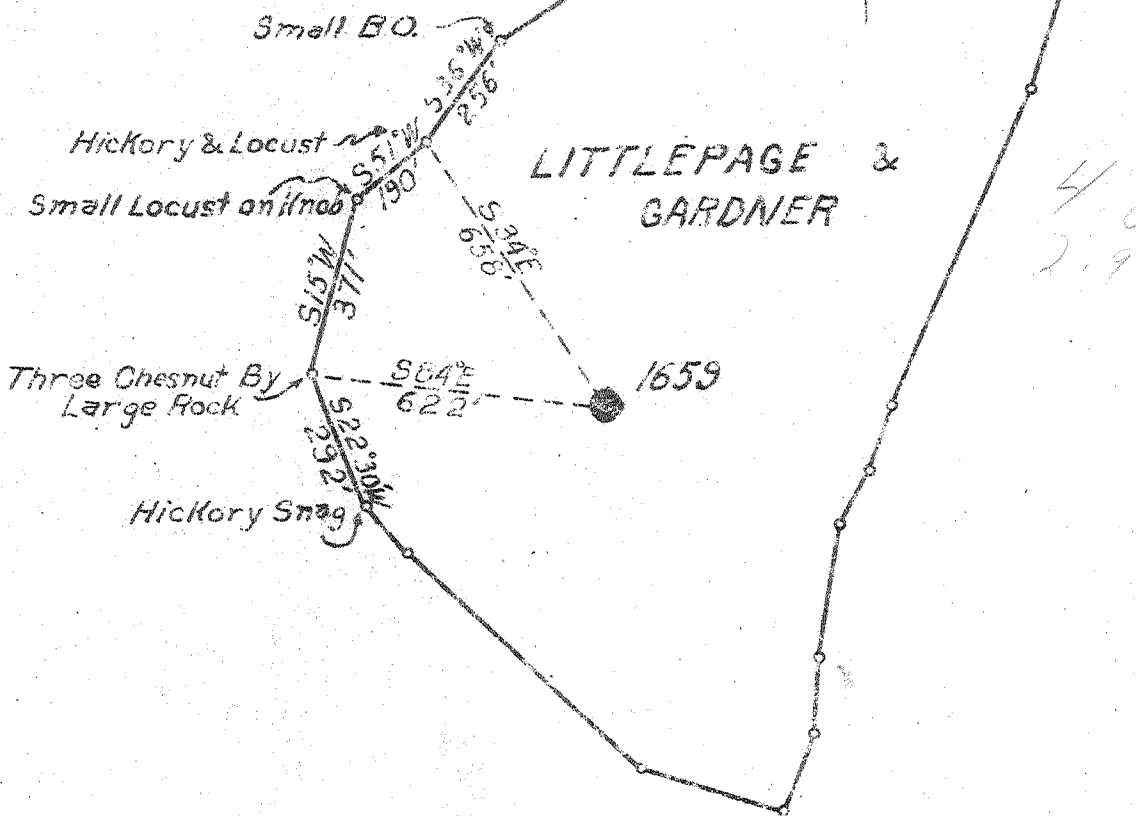
Latitude 38° 35'

Longitude 81° 20'

LITTLEPAGE & GARDNER

LITTLEPAGE & GARDNER

LITTLEPAGE & GARDNER



4055
2920

- New Location
- Drill Deeper
- Abandonment

Company UNITED FUEL GASCO.

Address CHARLESTON, W.VA.

Farm LITTLEPAGE & GARDNER

Tract _____ Acres 1600 Lease No. 592

Well (Farm) No. 5 Serial No. 1659

Elevation (Spirit Level) 300.21

Quadrangle WALTON

County KANAWHA District BIG SANDY

Engineer _____

Engineer's Registration No. 662

File No. 74-71 Drawing No. _____

Date JUNE 28, 48 Scale 1"=400

STATE OF WEST VIRGINIA
DEPARTMENT OF MINES
OIL AND GAS DIVISION
CHARLESTON

WELL LOCATION MAP
FILE NO. KAN-508-A

+ Denotes location of well on United States Topographic Maps, scale 1 to 62,500, latitude and longitude lines being represented by border lines as shown.

- Denotes one inch spaces on border line of original tracing.

6-6
6-0 220

KAN-508-A

Big Sandy District, Kanawha County, W. Va.

By United Fuel Gas Co.

On 1600 acres; Clendenin field; Lease No. 592; Map Square 74-71.

Drilling commenced Dec. 7, 1926; completed, Dec. 22, 1926.

Elevation, 867'.

8 1/2", 437', left in with steel shoe on bottom; 3" tubing, 1177' 8".

Test before shot, 22/10ths water in 3"; volume, 500,000 cu. ft.

Rock, pressure, 180 lbs.

No.....in Gas Report.

	Top.	Bottom.	Thickness.
Slate, sand, and shells	16	- 835	819
Lime and shells	835	- 910	75
Slate and sand	910	- 1045	135
Slate and shells	1045	- 1122	77
Salt Sand (gas at 1162-1167')	1122	-	
Total depth			1170