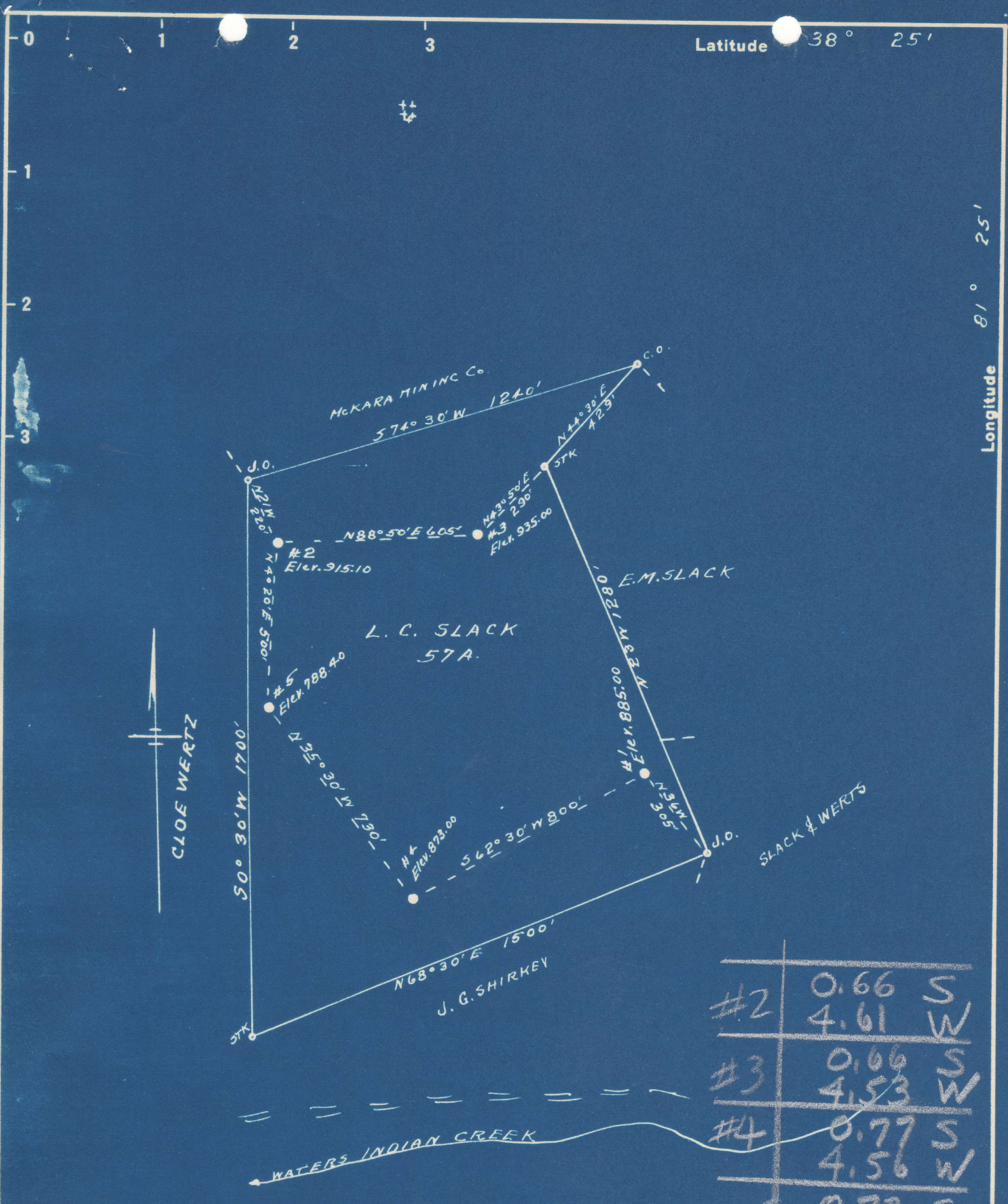


Latitude 38° 25'

Longitude 81° 25'



#2	0.66 S	4.61 W
#3	0.66 S	4.53 W
#4	0.77 S	4.56 W
#5	0.73 S	4.60 W
#1	0.73 S	4.53 W

New Location...   
 Drill Deeper.....   
 Abandonment.....

Company OKNULGEE SUPPLY CORP.  
BOX 9111  
 Address OKNULGEE, OKLA.  
 Farm L. C. SLACK  
 Tract \_\_\_\_\_ Acres 5.7 Lease No. \_\_\_\_\_  
 Well (Farm) No. 31-2-3-4-5 Serial No. \_\_\_\_\_  
 Elevation (Spirit Level) SEE ABOVE  
 Quadrangle CLENDENNIN  
 County KANAWHA District ELK  
 Engineer L. F. Dye  
 Engineer's Registration No. 804  
 File No. \_\_\_\_\_ Drawing No. \_\_\_\_\_  
 Date 7-22-48 Scale 1" = 400'

STATE OF WEST VIRGINIA  
 DEPARTMENT OF MINES  
 OIL AND GAS DIVISION  
 CHARLESTON

**WELL LOCATION MAP**

FILE NO. KAN-527-A-#2  
KAN-530-A-#3  
KAN-536-A KAN-533-A-#4  
#1 KAN-535-A-#5  
 + Denotes location of well on United States  
 Topographic Maps, scale 1 to 62,500, lat-  
 itude and longitude lines being represented  
 by border lines as shown.

- Denotes one inch spaces on border line  
 of original tracing.

60 217

L. C. SLACK NO. 2 WELL.

527A

Elk District, Kanawha County, W. Va.  
By Okmulgee Supply Corp., Box 911, Okmulgee, Okla.  
Abandoned under permit Kan-.....-A?

On ..... acres.

Elevation, .....' L.

Shot April 1, 1913, at 2012-2022'; March 19, 1914, at 2170-2175';

March 1, 1916, at 2153-2173'; Dec. 21, 1920, at 2152-2172';

and Dec. 30, 1920, at 2010-2128'.

8<sup>5</sup>/<sub>8</sub>" casing, 505'; 7", 1733'; all left in.

Record to Dept. of Mines stamped Aug. 27, 1948.

Oil well. Record to RGT from Mrs. Griffith Sept. 23, 1948. Old File No. 1309

	Top.	Bottom.
Salt Sand	1047	- 1620
Maxton Sand	1624	- 1660
Big Lime	1735	- 1880
Big Injun Sand	1880	- 1910
Squaw Sand	2010	- 2030
Weir Sand	2150	- 2173
Total depth		2176



*Completed No Inspection*

1309

STATE OF WEST VIRGINIA  
DEPARTMENT OF MINES  
OIL AND GAS DIVISION

WELL RECORD

Permit No. 527A

Oil or Gas Well X (KIND)

Company OKMULGEE SUPPLY CORP.  
 Address Box 911 - Okmulgee, Okla.  
 Farm L. C. Slack Acres \_\_\_\_\_  
 Location (waters) \_\_\_\_\_  
 Well No. No. 2 Elev. \_\_\_\_\_  
 District Elk County Kathwa  
 The surface of tract is owned in fee by \_\_\_\_\_  
 Address \_\_\_\_\_  
 Mineral rights are owned by \_\_\_\_\_  
 Address \_\_\_\_\_  
 Drilling commenced \_\_\_\_\_  
 Drilling completed \_\_\_\_\_  
 Date Shot 4-1-13 From 2012 To 2022  
 With 3-19-14 2170 2175  
3-1-16 2153 2173  
 Open Flow 12-21-20 /10ths Water in 2152 2172 Inch  
12-30-20 /10ths Merc. in 2010 2128 Inch  
 Volume \_\_\_\_\_ Cu. Ft.  
 Rock Pressure \_\_\_\_\_ lbs. \_\_\_\_\_ hrs.  
 Oil \_\_\_\_\_ bbls., 1st 24 hrs.  
 Fresh water \_\_\_\_\_ feet \_\_\_\_\_ feet  
 Salt water \_\_\_\_\_ feet \_\_\_\_\_ feet

Casing and Tubing	Used in Drilling	Left in Well	Packers
Size			
16			Kind of Packer
13			
10			Size of
8 5/8	505'	505'	4 5/8"
XXXX 7"	1783'	1783'	500'
5 3/16			
3			Perf. top
2			Perf. bottom
Liners Used			Perf. top
			Perf. bottom

CASING CEMENTED \_\_\_\_\_ SIZE \_\_\_\_\_ No. Ft. \_\_\_\_\_ Date \_\_\_\_\_  
 COAL WAS ENCOUNTERED AT \_\_\_\_\_ FEET \_\_\_\_\_ INCHES  
 \_\_\_\_\_ FEET \_\_\_\_\_ INCHES FEET \_\_\_\_\_ INCHES  
 \_\_\_\_\_ FEET \_\_\_\_\_ INCHES FEET \_\_\_\_\_ INCHES

Formation	Color	Hard or Soft	Top	Bottom	Oil, Gas or Water	Depth Found	Remarks
Salt Sand			1047	1620			
Maxon Sand			1624	1660			
Big Line			1735	1880			
Big Injun			1880	1910			
Squaw Sand			2010	2030			
Weir Sand			2150	2173			
Total Depth				2173			

