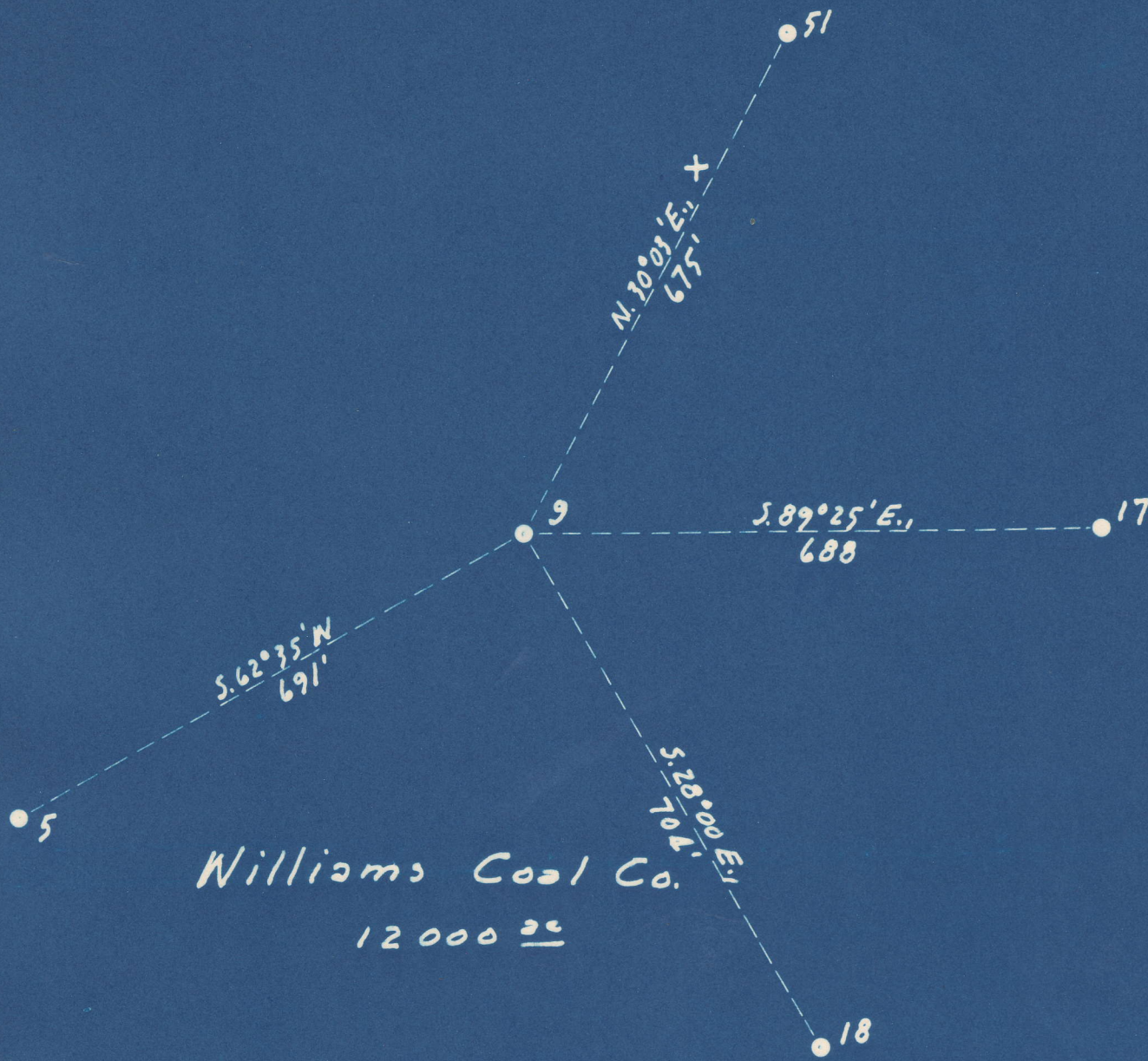


Latitude 38° 10'

Longitude 81° 25'



Williams Coal Co.
12000 ac

2.65 S
3.13 W

New Location

Drill Deeper

Abandonment

Company The Pure Oil Co.

Address Newark, Ohio

Farm Williams Coal Co.

Tract _____ Acres 12000 Lease No. 5012

Well (Farm) No. 9 Serial No. 248

Elevation (Spirit Level) 1434

Quadrangle Montgomery

County Kanawha District Cabin Creek

Engineer J. B. Hunter

Engineer's Registration No. Ohio-2912

File No. _____ Drawing No. _____

Date 6-21-48 Scale 1" = 1320'

STATE OF WEST VIRGINIA
DEPARTMENT OF MINES
OIL AND GAS DIVISION
CHARLESTON

WELL LOCATION MAP
FILE NO. KAN-534-A

+ Denotes location of well on United States Topographic Maps, scale 1 to 62,500, latitude and longitude lines being represented by border lines as shown.

- Denotes one inch spaces on border line of original tracing.

66 240

Cabin Creek District, Kanawha County, W. Va.

By The Pure Oil Co., Box 551, Newark, Ohio.

Abandoned under permit Kan-.....-A?

On 12,000 acres, on Cabin Creek.

Elevation, 1434' L.

Surface and minerals owned by Shonk Land Co., %D. C. Shonk, Daves, W. Va.

Drilling commenced Aug. 12, 1915; completed Oct. 18, 1915.

Shot Oct. 22, 1915, at 3092', with 70 qts. glycerine.

Oil, 173 bbls., 1st 24 hrs.

Fresh water, 500'.

Salt water, 1560 and 1600'.

10" casing, 815'; 8 1/2" , 1840' (pulled); 6 3/8" , 2425'; 2" tubing, 3133'.

Coal was encountered at 40-43 and 775-777'.

Oil well. Abandonment reported to Dept. of Mines Sept. 9, 1948.

Record to RCT from Mrs. Griffith July 10, 1949. Old File No. 1392.

	Top.	Bottom.
Clay	0 -	15
Slate	15 -	40
Coal	40 -	43
Slate	43 -	75
Sand	75 -	120
Slate	120 -	160
Sand	160 -	220
Slate	220 -	250
Sand	250 -	320
Slate	320 -	375
Sand	375 -	400
Slate	400 -	450
Lime	450 -	475
Sand (water, 500')	475 -	540
Lime	540 -	640
Slate	640 -	775
Coal	775 -	777
Lime	777 -	790
Sand	790 -	850
Slate	850 -	900
Sand	900 -	940
Shells	940 -	1040
Lime	1040 -	1080
Sand	1080 -	1150
Slate	1150 -	1240
Lime	1240 -	1320
Grampus Sand	1320 -	1430
Slate	1430 -	1470
Salt Sand (water, 1560') (water, 1600', hole full)	1470 -	1840
Slate	1840 -	1950
Sand	1950 -	2010
Red rock	2010 -	2085
Shells	2085 -	2190
Red rock	2190 -	2240
Slate	2240 -	2324
Pencil Cave	2324 -	2330
Little Lime	2330 -	2375
Lime, broken	2375 -	2416

(OVER)

WILLIAMS COAL CO. NO. 9 WELL (Continued).

	Top.	Bottom.
Pencil Cave	2416	2422
Big Lime	2422	2637
Sand	2637	2672
Slate and shells	2672	3048
Shale, brown	3048	3058
Berea Sand	3058	3093
Lime	3093	3103
Total depth		3103

Top	Bottom	Material
0	0	Clay
11	11	Slate
54	54	Coal
78	78	Slate
110	110	Slate
130	130	Slate
140	140	Sand
150	150	Slate
155	155	Sand
175	175	Slate
180	180	Sand
185	185	Slate
190	190	Sand
200	200	Slate
205	205	Coal
210	210	Slate
220	220	Sand
230	230	Slate
240	240	Sand
250	250	Slate
260	260	Sand
270	270	Slate
280	280	Sand
290	290	Slate
300	300	Sand
305	305	Shells
310	310	Sand
315	315	Sand
320	320	Slate
330	330	Sand
340	340	Slate
350	350	Sand
360	360	Slate
370	370	Sand
380	380	Slate
390	390	Sand
400	400	Slate
410	410	Sand
420	420	Slate
430	430	Sand
440	440	Slate
450	450	Sand
460	460	Slate
470	470	Sand
480	480	Slate
490	490	Sand
500	500	Slate
510	510	Sand
520	520	Slate
530	530	Sand
540	540	Slate
550	550	Sand
560	560	Slate
570	570	Sand
580	580	Slate
590	590	Sand
600	600	Slate
610	610	Sand
620	620	Slate
630	630	Sand
640	640	Slate
650	650	Sand
660	660	Slate
670	670	Sand
680	680	Slate
690	690	Sand
700	700	Slate
710	710	Sand
720	720	Slate
730	730	Sand
740	740	Slate
750	750	Sand
760	760	Slate
770	770	Sand
780	780	Slate
790	790	Sand
800	800	Slate
810	810	Sand
820	820	Slate
830	830	Sand
840	840	Slate
850	850	Sand
860	860	Slate
870	870	Sand
880	880	Slate
890	890	Sand
900	900	Slate
910	910	Sand
920	920	Slate
930	930	Sand
940	940	Slate
950	950	Sand
960	960	Slate
970	970	Sand
980	980	Slate
990	990	Sand
1000	1000	Slate

(1000)



Completed no inspection
139

STATE OF WEST VIRGINIA
 DEPARTMENT OF MINES
 OIL AND GAS DIVISION

WELL RECORD

Oil or Gas Well Dead oil well
(KIND)

Ab
 Permit No. 534-A

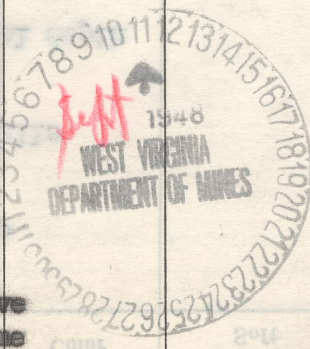
Company The Pure Oil Co.,
 Address Bx. 551, Newark, Ohio
 Farm Williams Coal Co., Acres 12,000
 Location (waters) Cabin Creek
 Well No. 9 Elev. 1,134'
 District Cabin Creek County Kanawha
 The surface of tract is owned in fee by Shonk Land Co.,
c/o Mr. D. C. Shonk Address Dawas, W. Va.
 Mineral rights are owned by Shonk Land Co.,
c/o Mr. D. C. Shonk Address Dawas, W. Va.
 Drilling commenced Aug 12 th, 1915
 Drilling completed Oct 18 th, 1915
 Date Shot 10-22-15 From - To 3092
 With 70 Qts. glycerine

Casing and Tubing	Used in Drilling	Left in Well	Packers
Size			Kind of Packer
16			
13			
10	815'0"	815'0"	Size of
8 1/4	1840'0"	Pulled	
6 5/8	2425'0"	2425'0"	Depth set.
5 3/16			
3			Perf. top
2		3133'0"	Perf. bottom
Liners Used			Perf. top
			Perf. bottom

Open Flow /10ths Water in _____ Inch
 /10ths Merc. in _____ Inch
 Volume _____ Cu. Ft.
 Rock Pressure _____ lbs. _____ hrs.
 Oil 173 bbls., 1st 24 hrs.
 Fresh water 500 feet _____ feet
 Salt water 1560 feet 1600 feet

CASING CEMENTED _____ SIZE _____ No. Ft. _____ Date _____
 COAL WAS ENCOUNTERED AT 40 FEET 36 INCHES
775 FEET 24 INCHES FEET INCHES
 FEET INCHES FEET INCHES

Formation	Color	Hard or Soft	Top	Bottom	Oil, Gas or Water	Depth Found	Remarks
Clay			0	15			
Slate			15	40			
Coal			40	43			
Slate			43	75			
Sand			75	120			
Slate			120	160			
Sand			160	220			
Slate			220	250			
Sand			250	320			
Slate			320	375			
Sand			375	400			
Slate			400	450			
Lime			450	475			
Sand			475	540	Water	500	
Lime			540	640			
Slate			640	775			
Coal			775	777			
Lime			777	790			
Sand			790	850			
Slate			850	900			
Sand			900	940			
Shells			940	1040			
Lime			1040	1080			
Sand			1080	1150			
Slate			1150	1240			
Lime			1240	1320			
Grampus			1320	1430			
Slate			1430	1470			
Salt Sand			1470	1840	Water	1560	
Slate			1840	1950	Water	1600	Hole full
Sand			1950	2010			
Red Rock			2010	2085			
Shells			2085	2190			
Red Rock			2190	2240			
Slate			2240	2324			
Pencil Cave			2324	2330			
Little Line			2330	2375			
Line, broken			2375	2416			



Formation	Color	Hard or Soft	Top	Bottom	Oil, Gas or Water	Depth Found	Remarks
Pencil Cave			2416	2422			
Big Lime			2422	2637			
Sand			2637	2672			
Slate & Shells			2672	3048			
Shale Br.			3048	3058			
Berea Sand			3058	3093			
Lime, total depth			3093	3103			

Formation	Color	Hard or Soft	Top	Bottom	Oil, Gas or Water	Depth Found	Remarks
...
...

DEPARTMENT OF MINES
STATE OF WEST VIRGINIA

Date September 9, 1948

APPROVED The Pure Oil Company, Owner

By Howard Miller (Title) Senior Superintendent