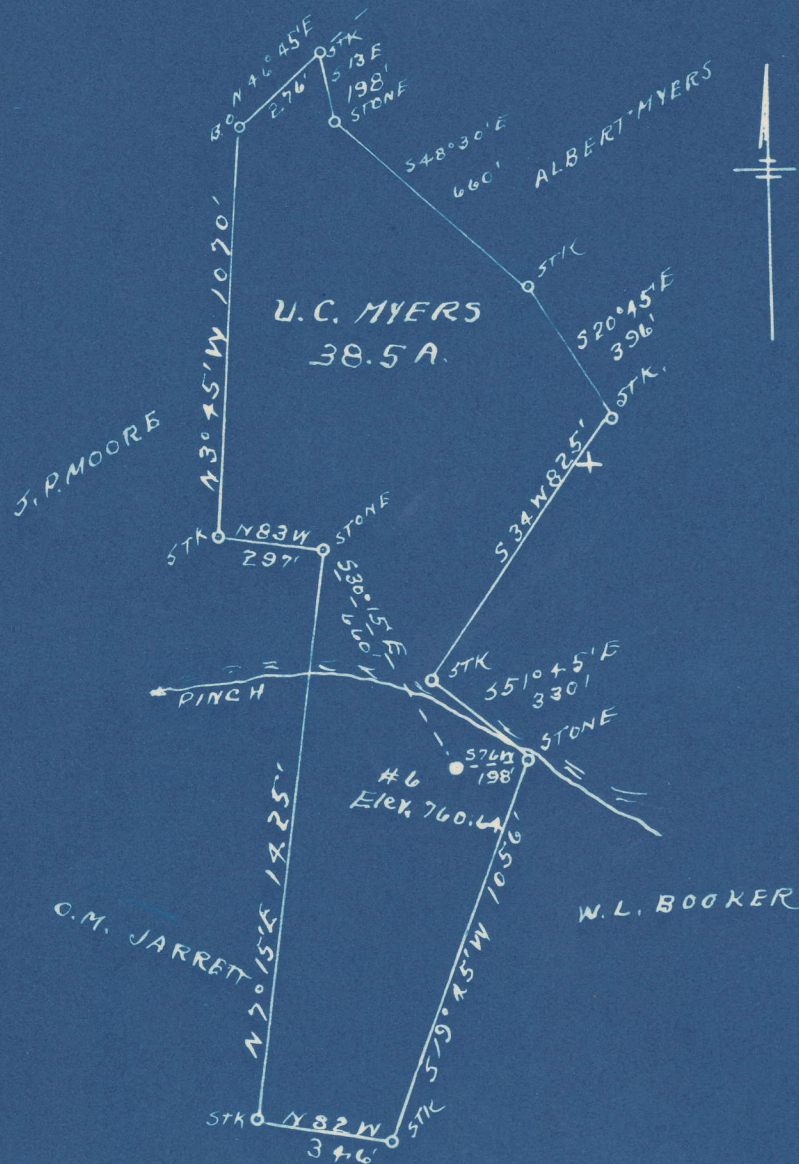


Latitude 38° 30'

Longitude 81° 25'



5.41 S  
3.33 W

New Location   
 Drill Deeper   
 Abandonment

Company OKMILGEE SUPPLY CORP.  
 Address OKMILGEE, OKLA.  
 Farm U.C. MYERS  
 Tract \_\_\_\_\_ Acres 38.5 Lease No. \_\_\_\_\_  
 Well (Farm) No. 6 Serial No. \_\_\_\_\_  
 Elevation (Spirit Level) 760.64  
 Quadrangle CLENDENNIN  
 County KANAWHA District ELK  
 Engineer L.F. Dye  
 Engineer's Registration No. 804  
 File No. \_\_\_\_\_ Drawing No. \_\_\_\_\_  
 Date 10-15-48 Scale 1" = 500'

STATE OF WEST VIRGINIA  
 DEPARTMENT OF MINES  
 OIL AND GAS DIVISION  
 CHARLESTON

WELL LOCATION MAP  
 FILE NO. KAN-542-A

+ Denotes location of well on United States Topographic Maps, scale 1 to 62,500, latitude and longitude lines being represented by border lines as shown.

- Denotes one inch spaces on border line of original tracing.

6-0 217



U. G. MYERS NO. 6 WELL.

542A

Elk District, Kanawha County, W. Va.  
 By Okmulgee Supply Corp., Okmulgee, Okla. (Formerly South Penn Natural  
 Gas Co. well).  
 Abandoned under permit Kan-.....-A?  
 On.....acres.  
 Elevation, .....' L.  
 Shot at 1785-1793'.  
 Date of completion not given.  
 8 $\frac{5}{8}$ " casing, 445'; 7" O. D., 1552'; 5 $\frac{1}{2}$ ", 1578'; 2" tubing, 1804'; all left in.  
 Coal was encountered at 370-375'.  
 Oil well. Record to Dept. of Mines stamped Oct. 9, 1948.  
 Record to RCT from Mrs. Griffith Jan. 5, 1949. Old File No. 1340.

	Top.	Bottom.
Coal	370 -	375
Salt Sand	820 -	1375
Maxton Sand	1380 -	1480
Big Lime	1528 -	1693
Big Injun Sand	1693 -	1718
Squaw Sand (oil and gas, 1785')	1784 -	....
Total depth		1804





*Completed No Inspection*

*1340*

Formerly South Penn Nat'l Gas STATE OF WEST VIRGINIA  
DEPARTMENT OF MINES  
OIL AND GAS DIVISION

**WELL RECORD**

Permit No. *Ab 242-A*

Oil or Gas Well \_\_\_\_\_ (KIND)

Company OKMULGEE SUPPLY CORPORATION  
 Address Okmulgee, Okla  
 Farm U. G. Myers Acres \_\_\_\_\_  
 Location (waters) \_\_\_\_\_  
 Well No. 6 Elev. \_\_\_\_\_  
 District Elk County Kanawha  
 The surface of tract is owned in fee by \_\_\_\_\_  
 Address \_\_\_\_\_  
 Mineral rights are owned by \_\_\_\_\_  
 Address \_\_\_\_\_  
 Drilling commenced \_\_\_\_\_  
 Drilling completed \_\_\_\_\_  
 Date Shot From 1785 To 1793  
 With \_\_\_\_\_  
 Open Flow /10ths Water in \_\_\_\_\_ Inch  
 /10ths Merc. in \_\_\_\_\_ Inch  
 Volume \_\_\_\_\_ Cu. Ft.  
 Rock Pressure \_\_\_\_\_ lbs. \_\_\_\_\_ hrs.  
 Oil \_\_\_\_\_ bbls., 1st 24 hrs.  
 Fresh water \_\_\_\_\_ feet \_\_\_\_\_ feet  
 Salt water \_\_\_\_\_ feet \_\_\_\_\_ feet

Casing and Tubing	Used in Drilling	Left in Well	Packers
Size			Kind of Packer
16			
13			Size of
10			Depth set
8 1/4 8-5/8"		445'	
6 5/8 7" O. D.		1552	
5-3/16 5-1/2"		1578	
3			Perf. top
2		1804	Perf. bottom
Liners Used			Perf. top
			Perf. bottom

CASING CEMENTED \_\_\_\_\_ SIZE \_\_\_\_\_ No. Ft. \_\_\_\_\_ Date \_\_\_\_\_  
 COAL WAS ENCOUNTERED AT 370 FEET 60 INCHES  
 \_\_\_\_\_ FEET \_\_\_\_\_ INCHES FEET \_\_\_\_\_ INCHES  
 \_\_\_\_\_ FEET \_\_\_\_\_ INCHES FEET \_\_\_\_\_ INCHES

Formation	Color	Hard or Soft	Top	Bottom	Oil, Gas or Water	Depth Found	Remarks
Coal			370	375			
Salt Sand			820	1375			
Maxon Sand			1380	1480			
Big Lime			1528	1693			
Big Injun			1693	1718			
Squaw Sand			1784				
Oil & Gas			1785				
Total Depth				1804			

*C*

