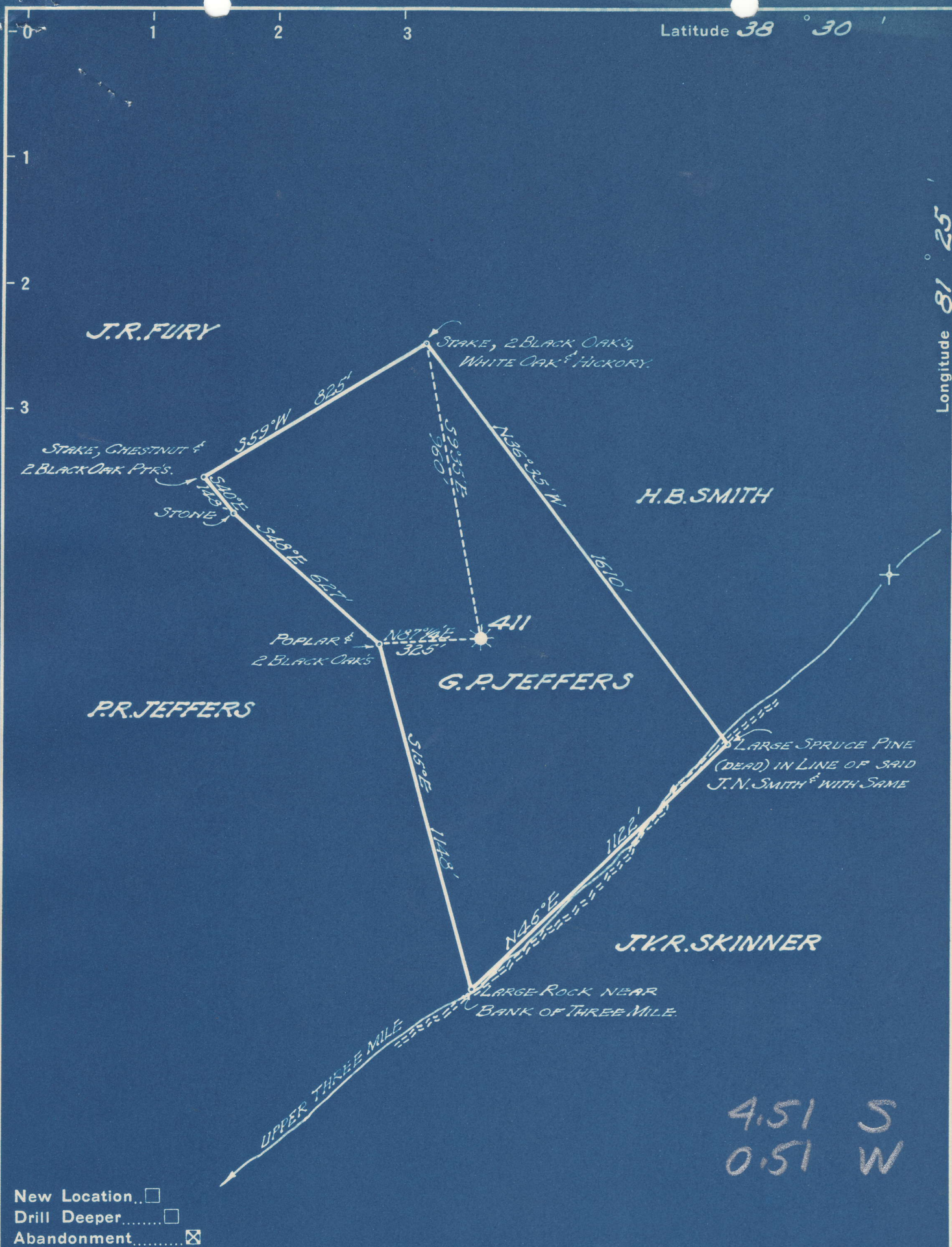


Latitude 38° 30'

Longitude 81° 25'



4.51 S  
0.51 W

New Location...   
 Drill Deeper...   
 Abandonment...

Company UNITED FUEL GAS CO.  
 Address CHARLESTON, W.VA.  
 Farm G.P. JEFFERS  
 Tract \_\_\_\_\_ Acres 34 3/4 Lease No. 8759  
 Well (Farm) No. 1 Serial No. 411  
 Elevation (Spirit Level) 922  
 Quadrangle CLENDENIN NW  
 County KANAWHA District EIK  
 Engineer J. H. MOORE  
 Engineer's Registration No. 662  
 File No. 72-65 Drawing No. \_\_\_\_\_  
 Date 4-13-49 Scale 1"=400'

STATE OF WEST VIRGINIA  
 DEPARTMENT OF MINES  
 OIL AND GAS DIVISION  
 CHARLESTON

WELL LOCATION MAP  
 FILE NO. KAN-627-A

+ Denotes location of well on United States Topographic Maps, scale 1 to 62,500, latitude and longitude lines being represented by border lines as shown.

- Denotes one inch spaces on border line of original tracing.

6-6 217

G. P. JEFFERS NO. 411 WELL.

627A

Elk District, Kanawha County, W. Va.  
 By United Fuel Gas Co., Box 1273, Charleston, 25, W. Va.  
 Abandoned under permit Kan-.....-A?  
 On 34.75 acres, on Upper Threemile.  
 Elevation, 922' L.  
 Minerals owned by Arthur Guy Jeffers et al., 211 Spring St.,  
 Charleston, W. Va.  
 Drilling completed Jan. 13, 1914.  
 Date shot, not given.  
 Oil, 15 bbls., 1st 24 hrs.  
 10" casing, 16'; 8 $\frac{1}{4}$ ", 640'; 6 $\frac{5}{8}$ ", 1417'; 5 $\frac{3}{16}$ ", 1638'; 2" tubing, 2025';  
 all left in.  
 Coal was encountered at 290-293 and 775-780'.  
 Oil well. Record to Dept. of Mines dated April 14, 1949.  
 Record to RCT from Mrs. Griffith Nov. 4, 1949. Old File No. 1411.

	Top.	Bottom.
Slate	16	60
Red rock	60	110
Sand	110	180
Slate	180	290
Coal	290	293
Slate	293	383
Sand	383	503
Red rock	503	543
Slate	543	640
Sand	640	720
Lime	720	775
Coal	775	780
Slate	780	875
Lime	875	900
Slate	900	1050
Sand	1050	1275
Slate	1275	1315
Sand	1315	1417
Slate	1417	1458
Sand	1458	1478
Red rock	1478	1505
Sand	1505	1550
Little Lime	1550	1605
Pencil Cave	1605	1615
Big Lime (gas, 1670')	1615	1745
Big Injun Sand	1745	1775
Slate	1775	1885
Weir Sand (oil, 1940-1960')	1885	2010
Slate	2010	2025
Total depth		2025



STATE OF WEST VIRGINIA  
DEPARTMENT OF MINES  
OIL AND GAS DIVISION

1411

Ab 627-A

WELL RECORD  
ABANDONMENT

Oil or Gas Well OIL  
(KIND)

Permit No. 627-A  
Company United Fuel Gas Company  
Address P. O. Box 1273, Charleston 25, W. Va.  
Farm G. P. Jeffers Acres 34.75  
Location (waters) Upper Three Mile  
Well No. 411 Elev. 922  
District Elk County Kanawha  
The surface of tract is owned in fee by \_\_\_\_\_  
Address \_\_\_\_\_  
Mineral rights are owned by Arthur Guy Jeffers, etal  
211 Spring Street Address Chas., W. Va.  
Drilling commenced Not Shown  
Drilling completed 1-13-14  
Date Shot Not Given From \_\_\_\_\_ To \_\_\_\_\_  
With \_\_\_\_\_  
Open Flow \_\_\_\_\_ /10ths Water in \_\_\_\_\_ Inch  
\_\_\_\_\_ /10ths Merc. in \_\_\_\_\_ Inch  
Volume \_\_\_\_\_ Cu. Ft.  
Rock Pressure \_\_\_\_\_ lbs. \_\_\_\_\_ hrs.  
Oil 15 \_\_\_\_\_ bbls., 1st 24 hrs.  
Fresh water \_\_\_\_\_ feet \_\_\_\_\_ feet  
Salt water \_\_\_\_\_ feet \_\_\_\_\_ feet

Casing and Tubing	Used in Drilling	Left in Well	Packers
Size			
16			Kind of Packer
13			
10	16	16	Size of
8 1/4	640	640	
6 5/8	1417	1417	Depth set
5 3/16	1638	1638	
3			Perf. top
2 Tubing		2025	Perf. bottom
Liners Used			Perf. top
			Perf. bottom

CASING CEMENTED \_\_\_\_\_ SIZE \_\_\_\_\_ No. Ft. \_\_\_\_\_ Date \_\_\_\_\_  
COAL WAS ENCOUNTERED AT 290 FEET 36 INCHES  
775 FEET 60 INCHES FEET INCHES  
FEET INCHES FEET INCHES

Formation	Color	Hard or Soft	Top	Bottom	Oil, Gas or Water	Depth Found	Remarks
Slate			16	60			
Red Rock			60	110			
Sand			110	180			
Slate			180	290			
Coal			290	293			
Slate			293	383			
Sand			383	503			
Red Rock			503	543			
Slate			543	640			
Sand			640	720			
Lime			720	775			
Coal			775	780			
Slate			780	875			
Lime			875	900			
Slate			900	1050			
Sand			1050	1275			
Slate			1275	1315			
Sand			1315	1417			
Slate			1417	1458			
Sand			1458	1478			
Red Rock			1478	1505			
Sand			1505	1550			
Little Lime			1550	1605			
Pencil Cave			1605	1615	Gas	1670	
Big Lime			1615	1745			
Big Injun			1745	1775			
Slate			1775	1885	Oil	1940-1960	
Weir Sand			1885	2010			
Slate			2010	2025			
Total Depth				2025'			

