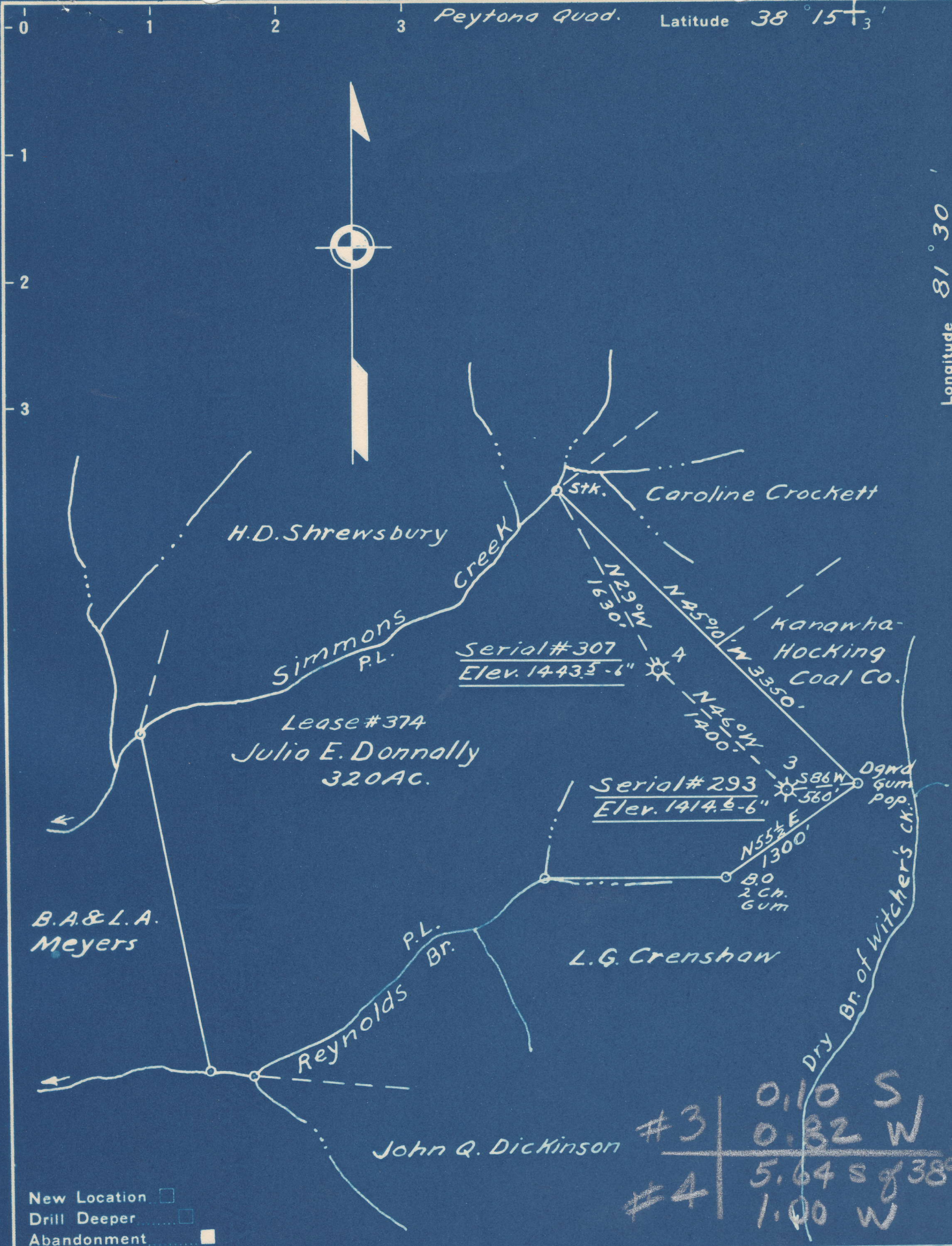


Charleston Quad.

Peytona Quad.

Latitude 38° 15' 3"

4



New Location   
 Drill Deeper   
 Abandonment

#3	0.10 S
	0.32 W
#4	5.64 S of 38° 20'
	1.00 W

Company Owens, Libbey-Owens Gas Dept.  
 Address Box 4158 Charleston 4 W. Va.  
 Farm Julia E. Donnally  
 Tract \_\_\_\_\_ Acres 320 Lease No. 374  
 Well (Farm) No. 3 & 4 Serial No. 293 & 307  
 Elevation (Spirit Level) #3 - 1414.6 Top 6"  
#4 - 1443.5 "  
 Quadrangle Charleston & Peytona  
 County Kanawha District Malden  
 Engineer T.S. Flournoy #3 NE  
 Engineer's Registration No. 269 #4 SE  
 File No. \_\_\_\_\_ Drawing No. \_\_\_\_\_  
 Date Oct 18, 1949 Scale 1" = 1000'

STATE OF WEST VIRGINIA  
 DEPARTMENT OF MINES  
 OIL AND GAS DIVISION  
 CHARLESTON

WELL LOCATION MAP  
 FILE NO. KAN-648-A-#3  
KAN-649-A-#4

+ Denotes location of well on United States Topographic Maps, scale 1 to 62,500, latitude and longitude lines being represented by border lines as shown.

- Denotes one inch spaces on border line of original tracing.

6-6 214



STATE OF WEST VIRGINIA  
DEPARTMENT OF MINES  
OIL AND GAS DIVISION

1423

Ab 648-A  
Permit No. \_\_\_\_\_

Oil or Gas Well Gas  
(KIND)

WELL RECORD

Company OWENS, LINKEY-OWENS GAS DEPARTMENT  
 Address P. O. Box 4158, Charleston 4, W. Va.  
 Farm Julia E. Donnelly Acres 320  
 Location (waters) \_\_\_\_\_  
 Well No. OLO #293, farm #3 Elev. 1414.63  
 District Halden County Kanawha  
 The surface of tract is owned in fee by \_\_\_\_\_  
 Address \_\_\_\_\_  
 Mineral rights are owned by Julia E. Donnelly Heirs  
Callipolis, Ohio Address \_\_\_\_\_  
 Drilling commenced 6-20-27  
 Drilling completed 8-21-27  
 Date Shot \_\_\_\_\_ From \_\_\_\_\_ To \_\_\_\_\_  
 With \_\_\_\_\_  
 Open Flow \_\_\_\_\_ /10ths Water in \_\_\_\_\_ Inch  
 \_\_\_\_\_ /10ths Merc. in \_\_\_\_\_ Inch  
 Volume 726 M Cu. Ft.  
 Rock Pressure 248 lbs. 14 hrs.  
 Oil \_\_\_\_\_ bbls., 1st 24 hrs.  
 Fresh water \_\_\_\_\_ feet \_\_\_\_\_ feet  
 Salt water \_\_\_\_\_ feet \_\_\_\_\_ feet

Casing and Tubing	Used in Drilling	Left in Well	Packers
Size			Kind of Packer
16			
13	0'	0'	Gas anchor
10			Size of
8 1/4	731'	731'	3" x 6-5/8"
6 5/8	1812'	1812'	Depth set
5 3/16			1899
3	2343'	2343'	Perf. top <u>2331</u>
2			Perf. bottom <u>2326</u>
Liners Used			Perf. top <u>2260</u>
			Perf. bottom <u>2255</u>

CASING CEMENTED \_\_\_\_\_ SIZE \_\_\_\_\_ No. Ft. \_\_\_\_\_ Date \_\_\_\_\_  
 COAL WAS ENCOUNTERED AT \_\_\_\_\_ FEET \_\_\_\_\_ INCHES  
 \_\_\_\_\_ FEET \_\_\_\_\_ INCHES FEET \_\_\_\_\_ INCHES  
 \_\_\_\_\_ FEET \_\_\_\_\_ INCHES FEET \_\_\_\_\_ INCHES

Formation	Color	Hard or Soft	Top	Bottom	Oil, Gas or Water	Depth Found	Remarks
Soil			0	8			
Sand			8	105			
Coal			105	108			
Slate			108	255			
Coal			255	258			
Slate			258	294			
Coal			294	298			
Sand			298	363			
Coal			363	366			
Slate			366	385			
Sand			385	626			
Coal			626	628			
Slate			628	688			
Lime			688	730			
Slate			730	788			
Lime			788	1066			
Sand			1066	1120	Water	1066'	
Slate			1120	1203	Gas	1254	166 M
Salt Sand			1203	1348	Water	1290	enough to drill
Slate & Shells			1348	1370			
Salt Sand			1370	1433			
Slate			1433	1471	Water	1394	Hole full
Sand			1471	1618			
Red Rock			1618	1632			
Slate & Shells			1632	1666			
Red Rock			1666	1678			
Lime Breakers			1678	1700			
Maxton Sand			1700	1752			
Little Lime			1752	1778			
Slate			1778	1798			
Pencil Cave			1798	1802			
Big Lime			1802	2000	Gas	1930	
Big Injun			2000	2057	Gas	1990	show
Slate & Shells			2057	2227			
Weir Sand			2227	2315	Gas	2227-6 & 2230	149 M
Slate			2315	2343	Gas	2245 & 2247	726 M
Total Depth				2343	Gas	2260 & 2265	860 M



