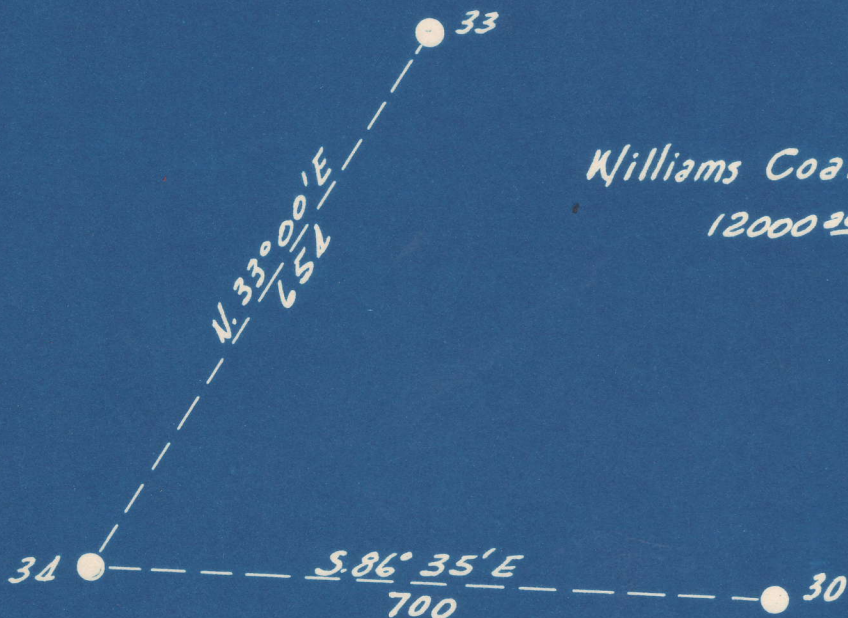


Latitude 38° 10'

Longitude 81° 25'



Williams Coal Co.
12000±

S 3.10
W 3.90

New Location..
Drill Deeper.....
Abandonment.....

Company The Pure Oil Co.
 Address Newark, Ohio
 Farm Williams Coal Co.
 Tract _____ Acres 12000 Lease No. 5012
 Well (Farm) No. 34 Serial No. 308
 Elevation (Spirit Level) 1433
 Quadrangle Montgomery *WC*
 County Kanawha District Cabin Creek
 Engineer J. J. [Signature]
 Engineer's Registration No. Ohio-2912
 File No. _____ Drawing No. _____
 Date 11-22-49 Scale 1" = 200'

STATE OF WEST VIRGINIA
DEPARTMENT OF MINES
OIL AND GAS DIVISION
CHARLESTON

WELL LOCATION MAP
FILE NO. KAN-665-A

+ Denotes location of well on United States Topographic Maps, scale 1 to 62,500, latitude and longitude lines being represented by border lines as shown.

- Denotes one inch spaces on border line of original tracing.

6-6 140

WILLIAMS COAL CO. NO. 34 WELL.

665A

Cabin Creek District, Kanawha County, W. Va.

By The Pure Oil Co., Box 551, Newark, Ohio.

Abandoned under permit Kan-....-A? (Water injection well now).

On 12,000 acres, on Cabin Creek.

Elevation, 1433' L.

Surface and minerals owned by Shonk Land Co., 802 Kanawha Banking & Trust Bldg., Charleston, W. Va.

Drilling commenced May 15, 1916; completed Sept. 29, 1916.

Shot Oct. 5, 1916, at 3080-3102½', with 90 qts.

Oil, 125 bbls., 1st 24 hrs.

Salt water at 1595'.

10" casing, 902'; 8¼", 1775'; 6⅝", 2385'; 5⅜", 1599'; 3" tubing, 3072'.

Coal was encountered at 895-900'.

Water injection well (oil). Record to Dept. of Mines dated Dec. 16, 1949.

Record to ROT from Mrs. Griffith Nov. 18, 1950. Old File No. 1505.

	Top.	Bottom.
Clay, yellow	0	10
Slate, black	10	50
Sand, gray	50	130
Lime, white	130	145
Sand, white	145	320
Slate, black	320	370
Lime, white	370	430
Slate, black	430	450
Sand, white	450	500
Slate, black	500	600
Sand, white	600	650
Shells, black	650	700
Sand, white	700	825
Slate, white	825	875
Slate, black	875	895
Coal, black	895	900
Sand, white	900	950
Slate, black	950	1025
Sand, white	1025	1100
Slate, black	1100	1175
Sand, white	1175	1280
Slate, black	1280	1340
Crampus Sand, white	1340	1400
Slate, black	1400	1460
Salt Sand, white (water, 1595', hole full)	1460	1775
Slate, black	1775	1800
Shells, white	1800	1840
Slate, black	1840	1860
Shells, white	1860	1885
Lime, white	1885	1920
Red rock	1920	1980
Lime, white	1980	2040
Red rock	2040	2080
Shells, white	2080	2085
Sand, white	2085	2135
Lime, white	2135	2155
Red rock	2155	2195
Shells, black	2195	2225

(OVER)



STATE OF WEST VIRGINIA
DEPARTMENT OF MINES
OIL AND GAS DIVISION

1505

WELL RECORD

Permit No. KAN 4665-A

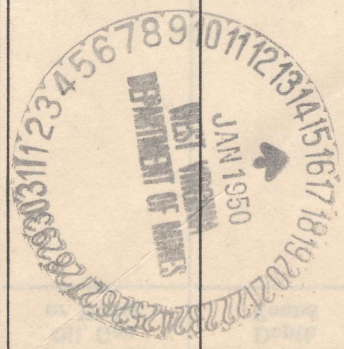
Oil or Gas Well Water Inject
(KIND) ion

Company The Pure Oil Company
Address P.O. Box 551 - Newark, Ohio
Farm Williams Coal Co. Acres 12,000
Location (waters) Cabin Creek
Well No. 34 Elev. 1433
District Cabin Creek County Kanawha
The surface of tract is owned in fee by Shonk Land Co.
802 Kanawha Banking & Trust Co. Bldg. Charleston
Mineral rights are owned by Shonk Land Co. W. Va.
802 Kanawha Banking & Trust Co. Bldg. Charleston
Drilling commenced 5/15/16 W. Va.
Drilling completed 9/29/16
Date Shot 10/5/16 From 3080 To 3102 1/2
With 90 qts.
Open Flow /10ths Water in Inch
/10ths Merc. in Inch
Volume _____ Cu. Ft.
Rock Pressure _____ lbs. _____ hrs.
Oil 125 bbls., 1st 24 hrs.
Fresh water _____ feet _____ feet
Salt water 1595 feet _____ feet

Casing and Tubing	Used in Drilling	Left in Well	Packers
Size			
16			Kind of Packer _____
13			
10	902'	902'	Size of _____
8 1/4	1775'	1775'	<u>None in.</u>
6 3/8	2385'	2385'	Depth set _____
5 3/16	1599'	1599'	
3	3072'	3072'	Perf. top _____
2			Perf. bottom _____
Liners Used			Perf. top _____
			Perf. bottom _____

CASING CEMENTED _____ SIZE _____ No. Ft. _____ Date _____
COAL WAS ENCOUNTERED AT 895 FEET 60 INCHES
_____ FEET _____ INCHES FEET _____ INCHES
_____ FEET _____ INCHES FEET _____ INCHES

Formation	Color	Hard or Soft	Top	Bottom	Oil, Gas or Water	Depth Found	Remarks
Clay	yellow		0	10			
Slate	black		10	50			
Sand	gray		50	130			
Lime	white		130	145			
Sand	white		145	320			
Slate	black		320	370			
Lime	white		370	430			
Slate	black		430	450			
Sand	white		450	500			
Slate	black		500	600			
Sand	white		600	650			
Shells	black		650	700			
Sand	white		700	825			
Slate	white		825	875			
Slate	black		875	895			
Coal	black		895	900			
Sand	white		900	950			
Slate	black		950	1025			
Sand	white		1025	1100			
Slate	black		1100	1175			
Sand	white		1175	1280			
Slate	black		1280	1340			
Sand-Grampus	white		1340	1400			
Slate	black		1400	1460			
SALT SAND	white		1460	1775	Water	1595'	Hole full
Slate	black		1775	1800			
Shells	white		1800	1840			
Slate	black		1840	1860			
Shells	white		1860	1885			
Lime	white		1885	1920			
Rock	red		1920	1980			
Lime	white		1980	2040			
Rock	red		2040	2080			
Shells	white		2080	2085			
Sand	white		2085	2135			
Lime	white		2135	2155			
Rock	red		2155	2195			
Shells	black		2195	2225			



Formation	Color	Hard or Soft	Top	Bottom	Oil, Gas or Water	Depth Found	Remarks
Rock	Red		2225	2250			
Lime	black		2250	2260			
Slate	black		2260	2280			
Shells	gray		2280	2305			
Slate-Pencil	black		2305	2315			
Little Lime	black		2315	2376			
Slate	black		2376	2381			
BIG LIME	white		2381	2625			
INJUN SAND	red		2625	2655			
Slate	black		2655	2700			
Shells	black		2700	2850			
Slate	white		2850	2960			
Shells	black		2960	2980			
Slate	white		2980	3020			
Lime	black		3020	3045			
Shale	brown		3045	3065			
BEREA SAND	gray		3065	3102			
Lime	black		3102	3105			
		TOTAL DEPTH		3105			

DEPARTMENT OF MINES
STATE OF WEST VIRGINIA

December 16,

Date _____, 19__

APPROVED

THE FURN OIL COMPANY
Box 751, Newark, Ohio

Owner

By

Ford Willey
(Title)