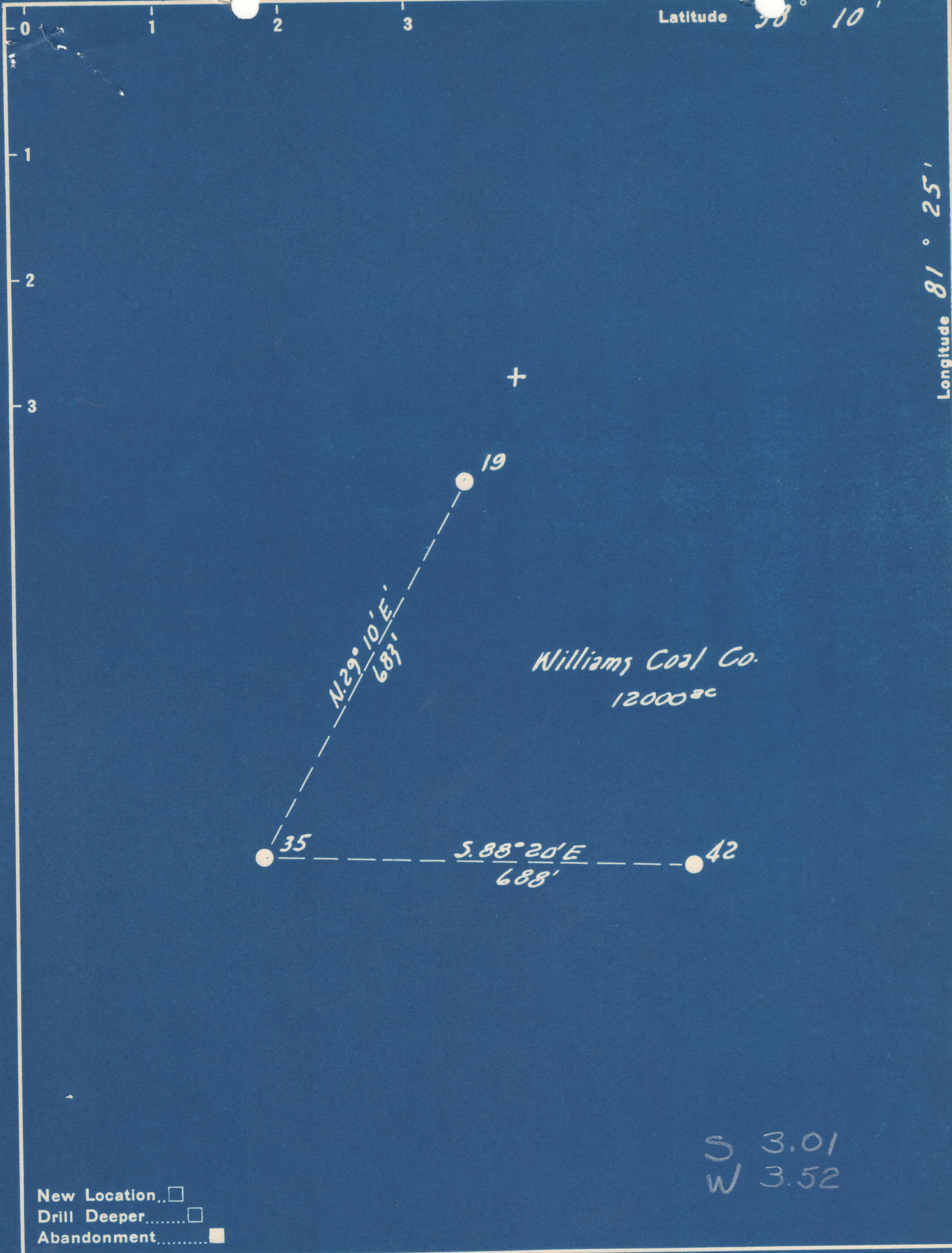


Latitude 38° 10'

Longitude 81° 25'



S 3.01
W 3.52

New Location
 Drill Deeper
 Abandonment

Company The Pure Oil Co.
 Address Newark, Ohio
 Farm Williams Coal Co.
 Tract _____ Acres 12000 Lease No. 5012
 Well (Farm) No. 35 Serial No. 309
 Elevation (Spirit Level) 1457
 Quadrangle Montgomery WC
 County Kanawha District Cabin Creek
 Engineer J. J. Hunter
 Engineer's Registration No. Ohio-2912
 File No. _____ Drawing No. _____
 Date 11-22-49 Scale 1" = 200'

STATE OF WEST VIRGINIA
 DEPARTMENT OF MINES
 OIL AND GAS DIVISION
 CHARLESTON

WELL LOCATION MAP
 FILE NO. KAN-667-A

+ Denotes location of well on United States Topographic Maps, scale 1 to 62,500; latitude and longitude lines being represented by border lines as shown.
 - Denotes one inch spaces on border line of original tracing.

6-6 243

WILLIAMS COAL CO. NO. 35 WELL.

(Continued)

667A

Cabin Creek District, Kanawha County, W. Va.

By The Pure Oil Co., Box 551, Newark, Ohio.

Abandoned under permit Kan-.....-A?

On 12,000 acres, on Cabin Creek.

Elevation, 1457' L.

Surface and minerals owned by Shonk Land Co., 802 Kanawha Banking & Trust Bldg., Charleston, W. Va.

Drilling completed Oct. 14, 1916.

Shot Oct. 16, 1916, at 3124-3138', with 60 qts.

Oil, 46 bbls.; 1st 24 hrs.

Salt water, 1630'.

10" casing, 950'; 8 1/4" tubing, 1835' (pulled); 6 5/8" tubing, 2387'; 2" tubing, 3138'; all left in.

Coal was encountered at 238-240, 698-700, 790-792, and 895-897'.

Oil well. Record to Dept. of Mines dated Dec. 19, 1949.

Record to RGT from Mrs. Griffith Sept. 9, 1950. Old File No. 1470.

	Top.	Bottom.
Clay	0	6
Slate	6	20
Sand	20	65
Slate	65	80
Sand	80	140
Slate	140	150
Sand	150	220
Slate	220	238
Coal	238	240
Sand	240	350
Slate	350	375
Sand	375	485
Slate	485	500
Sand	500	570
Slate	570	585
Lime	585	615
Slate	615	635
Sand	635	698
Coal	698	700
Sand	700	780
Slate	780	790
Coal	790	792
Slate	792	800
Sand	800	815
Slate	815	825
Sand	825	865
Lime	865	875
Slate	875	895
Coal	895	897
Slate	897	905
Lime	905	915
Slate	915	925
Lime	925	940
Sand	940	975
Slate	975	1075
Sand	1075	1145
Slate	1145	1170
Sand	1170	1260
Slate	1260	1266

(OVER)

WILLIAMS COAL CO. NO. 35 WELL (Continued).

4520

	Top.	Bottom.	
Sand	1266	1340	
Slate	1340	1350	
Big Dunkard Sand	1350	1438	
Slate	1438	1490	
Salt Sand (water, 1630')	1490	1827	
Slate	1827	1833	
Lime	1833	1855	
Slate	1855	1875	
Lime	1875	1956	
Red rock	1956	2006	
Slate	2006	2015	
Sand	2015	2035	
Slate and lime	2035	2365	
Little Lime	2365	2425	
Pencil Cave	2425	2450	
Big Lime	2450	2672	
Big Injun Sand	2672	2712	
Slate and lime	2712	3090	
Brown shale	3090	3109	
Berea Sand (oil, 3124-3138')	3109	3138	
Total depth		3140	

(over)



1476

STATE OF WEST VIRGINIA
DEPARTMENT OF MINES
OIL AND GAS DIVISION

WELL RECORD

Permit No. KAN-667-A

Oil or Gas Well Oil

Company <u>The Pure Oil Company</u>	Casing and Tubing	Used in Drilling	Left in Well	Packers
Address <u>P.O. Box 551 - Newark, Ohio</u>				
Farm <u>Williams Coal Co.</u> Acres <u>12,000</u>	Size			
Location (waters) <u>Cabin Creek</u>	16			Kind of Packer
Well No. <u>35</u> Elev. <u>1457</u>	13			
District <u>Cabin Creek</u> County <u>Kanawha</u>	10	<u>950'</u>	<u>950'</u>	Size of
The surface of tract is owned in fee by <u>Shonk Land Co.</u>	8 1/4	<u>1835'</u>	<u>1835'</u>	
<u>802 Kanawha Banking & Trust Co. Bldg., Charleston, W. Va.</u>	6 3/8	<u>2387'</u>	<u>2387'</u>	Depth set
Mineral rights are owned by <u>Shonk Land Co.</u>	3			Perf. top
<u>802 Kanawha Banking & Trust Co. Bldg., Charleston, W. Va.</u>	2	<u>3138'</u>	<u>3138'</u>	Perf. bottom
Drilling commenced <u>No record</u>	Liners Used			Perf. top
Drilling completed <u>10/14/16</u>				Perf. bottom
Date Shot <u>10/16/16</u> From <u>3124</u> To <u>3138</u>				
With <u>60 Qts.</u>				

Open Flow _____ /10ths Water in _____ Inch

_____ /10ths Merc. in _____ Inch

Volume _____ Cu. Ft.

Rock Pressure _____ lbs. _____ hrs.

Oil 46 bbls., 1st 24 hrs.

Fresh water _____ feet _____ feet

Salt water 1630 feet _____ feet

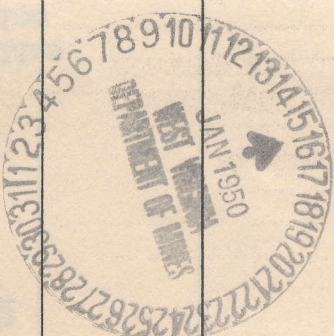
CASING CEMENTED _____ SIZE _____ No. Ft. _____ Date _____

COAL WAS ENCOUNTERED AT 238 FEET 24 INCHES

698 FEET 24 INCHES 790 FEET 24 INCHES

895 FEET 24 INCHES _____ FEET _____ INCHES

Formation	Color	Hard or Soft	Top	Bottom	Oil, Gas or Water	Depth Found	Remarks
Elay			0	6			
Slate			6	20			
Sand			20	65			
Slate			65	80			
Sand			80	140			
Slate			140	150			
Sand			150	220			
Slate			220	238			
Coal			238	240			
Sand			240	350			
Slate			350	375			
Sand			375	485			
Slate			485	500			
Sand			500	570			
Slate			570	585			
Lime			585	615			
Slate			615	635			
Sand			635	698			
Coal			698	700			
Sand			700	780			
Slate			780	790			
Coal			790	792			
Slate			792	800			
Sand			800	815			
Slate			815	825			
Sand			825	865			
Lime			865	875			
Slate			875	895			
Coal			895	897			
Slate			897	905			
Lime			905	915			
Slate			915	925			
Lime			925	940			
Sand			940	975			
Slate			975	1075			
Sand			1075	1145			
Slate			1145	1170			
Sand			1170	1260			
Slate			1260	1266			



(Over)

SEP - 9 1950

Formation	Color	Hard or Soft	Top	Bottom	Oil, Gas or Water	Depth Found	Remarks
Sand			1266	1340			
Slate			1340	1350			
Big Dunkard			1350	1438			
Slate			1438	1490			
<u>SALT SAND</u>			1490	1827	Water	1630	
Slate			1827	1833			
Lime			1833	1855			
Slate			1855	1875			
Lime			1875	1956			
Red Rock			1956	2006			
Slate			2006	2015			
Sand			2015	2035			
Slate & Lime			2035	2365			
Little Lime			2365	2425			
Pencil Cave			2425	2450			
<u>BIG LIME</u>			2450	2672			
<u>BIG INJUN</u>			2672	2712			
Slate & Lime			2712	3090			
Brown shale			3090	3109			
<u>BEREA SAND</u>			3109	3138	Oil	3124-3138	
<u>TOTAL DEPTH</u>				3140			

Date December 19, 1949
The Pure Oil Co., Box 551, Newark, Ohio

APPROVED _____, Owner

By Hard Miles
(Title)
Senior Superintendent