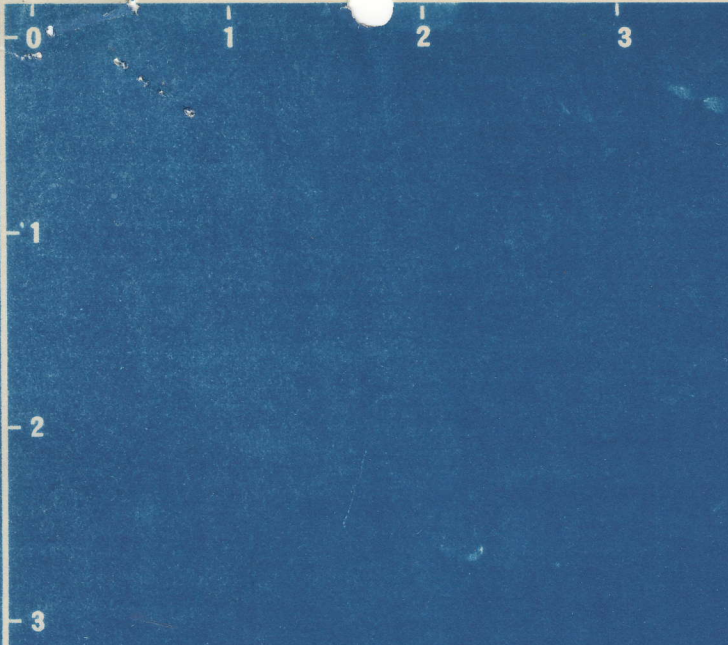
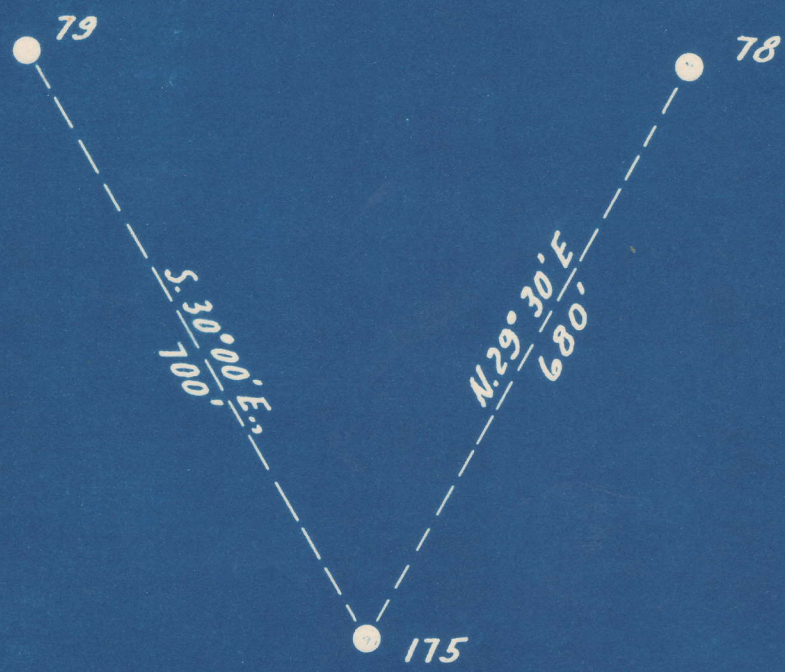


Latitude 38° 10'

Longitude 81° 25'



Williams Coal Co.
12000^{ac}



S 3.21
W 3.42

New Location
 Drill Deeper
 Abandonment

Company The Pure Oil Co.
 Address Newark, Ohio
 Farm Williams Coal Co
 Tract _____ Acres 12000 Lease No. 5012
 Well (Farm) No. 175 Serial No. 320
 Elevation (Spirit Level) 1335
 Quadrangle Montgomery WC
 County Kanawha District Cabin Creek
 Engineer J. B. Hunter
 Engineer's Registration No. Ohio-2912
 File No. _____ Drawing No. _____
 Date 11-22-49 Scale 1" = 200'

STATE OF WEST VIRGINIA
 DEPARTMENT OF MINES
 OIL AND GAS DIVISION
 CHARLESTON

WELL LOCATION MAP
 FILE NO. KAN-678-A

+ Denotes location of well on United States Topographic Maps, scale 1 to 62,500, latitude and longitude lines being represented by border lines as shown.

- Denotes one inch spaces on border line of original tracing.

"IMPERIAL" TRACING CLOTH
 K & E CO., N. Y.

2-0 240

WILLIAMS COAL CO. NO. 175 WELL.

678A

Cabin Creek District, Kanawha County, W. Va.

By The Pure Oil Co., Box 551, Newark, Ohio.

Abandoned under permit Kan-.....-A?

On 12,000 acres, on Cabin Creek.

Elevation, 1335' L.

Surface and minerals owned by Shonk Land Co., 802 Kanawha Banking & Trust Bldg., Charleston, W. Va.

Drilling commenced Sept. 19, 1918; completed Dec. 24, 1918.

Shot Feb. 17, 1919, at 3044-3051', with 20 qts.

Oil, 7 bbls., 1st 24 hrs.

Fresh water, 230 and 348'.

Salt water, 1548'.

10" casing, 830'; 8", 1465'; 6", 2327'; 3" tubing, 3027'; all left in.

Oil well. Now water injection well. Record to Dept. of Mines dated Jan. 10, 1950.

Record to RCT from Mrs. Griffith Sept. 9, 1950. Old File No. 1475.

Coal was encountered at 60-62, 160-165, 435-440, 531-535, 599-605, & 825-827'.

	Top.	Bottom.
Conductor	0	16
Sand, white	16	40
Slate, black	40	60
Coal	60	62
Slate, black	62	112
Sand, white	112	160
Coal, black	160	165
Sand, white (water, 230', 2 BPH)	165	230
Lime, black	230	300
Sand, white	300	348
Slate, black	348	355
Sand, white, water, 348', 4 BPH)	355	420
Slate, black	420	430
Sand, white	430	435
Coal, black	435	440
Slate, black	440	531
Coal, black	531	535
Lime, black	535	599
Coal, black	599	605
Lime, black	605	720
Sand, white	720	825
Coal, black	825	827
Slate	827	955
Sand, white	955	1235
Slate, black	1235	1240
Big Dunkard Sand, white	1240	1330
Slate, black	1330	1400
Salt Sand, white (water, 1548'; filled up 900')	1400	1718
Slate and shells, white	1718	1760
Red rock	1760	1768
Slate and lime, white	1768	1880
Red rock	1880	1922
Slate and lime, white	1922	2095
Red rock	2095	2135
Slate, black	2135	2200
Maxton Sand, white	2200	2220
Slate, black	2220	2280

(OVER)

WILLIAMS COAL CO. NO. 175 WELL (Continued).

4870

	Top.	Bottom.
Little Lime, black	2280	2310
Pencil Cave, black	2310	2337
Big Lime, white	2337	2580
Big Injun Sand, red	2580	2600
Slate and lime, black	2600	3010
Shale, brown	3010	3025
Berea Sand, white (oil, 3044-3051')	3025	3052
Total depth		3055

Depth	Description
0 - 10	Conductor
10 - 15	Sand, white
15 - 20	Slate, black
20 - 25	Coal
25 - 30	Slate, black
30 - 35	Sand, white
35 - 40	Coal, black
40 - 45	Coal, black
45 - 50	Sand, white (water, 50')
50 - 55	Sand, black
55 - 60	Sand, white
60 - 65	Slate, black
65 - 70	Sand, white (water, 70')
70 - 75	Slate, black
75 - 80	Sand, white
80 - 85	Coal, black
85 - 90	Slate, black
90 - 95	Coal, black
95 - 100	Sand, black
100 - 105	Coal, black
105 - 110	Sand, black
110 - 115	Coal, black
115 - 120	Sand, white
120 - 125	Slate, black
125 - 130	Sand, white
130 - 135	Slate, black
135 - 140	Big Injun Sand, white
140 - 145	Slate, black
145 - 150	Sand, white (water, 148')
150 - 155	filled up 90'
155 - 160	Slate and shale, white
160 - 165	Red rock
165 - 170	Slate and lime, white
170 - 175	Red rock
175 - 180	Slate and lime, white
180 - 185	Red rock
185 - 190	Slate and lime, white
190 - 195	Red rock
195 - 200	Slate, black
200 - 205	Marion Sand, white
205 - 210	Slate, black

(over)



STATE OF WEST VIRGINIA
DEPARTMENT OF MINES
OIL AND GAS DIVISION

1475

WELL RECORD

Permit No. KAN-678-A

Oil or Gas Well Water Injection
(KIND)

Company The Pure Oil Company
Address Box 551 - Newark, Ohio
Farm Williams Coal Co. Acres 12,000
Location (waters) Cabin Creek
Well No. 175 Elev. 1335
District Cabin Creek County Kanawha - W.Va.
The surface of tract is owned in fee by Shonk Land Co.
802 Kanawha Banking & Trust Co. Bldg. Address Charleston, W.Va.
Mineral rights are owned by Shonk Land Co.
802 Kanawha Banking & Trust Co. Bldg. Address Charleston, W.Va.
Drilling commenced 9/19/18
Drilling completed 12/24/18
Date Shot 2/17/19 From 3044 To 3051
With 20 Qts.

Casing and Tubing	Used in Drilling	Left in Well	Packers
Size			Kind of Packer
16			
13			
10	830'	830'	Size of
8 3/4	1165'	1165'	
6 5/8	2327'	2327'	Depth set
5 3/16			
3	3027'	3027'	Perf. top
2			Perf. bottom
Liners Used			Perf. top
			Perf. bottom

Open Flow /10ths Water in _____ Inch
/10ths Merc. in _____ Inch
Volume _____ Cu. Ft.
Rock Pressure _____ lbs. _____ hrs.
Oil 7 bbls., 1st 24 hrs.
Fresh water 230 feet 348 feet
Salt water 1548 feet _____ feet

CASING CEMENTED _____ SIZE _____ No. Ft. _____ Date _____
COAL WAS ENCOUNTERED AT 60 FEET 24 INCHES
160 FEET 60 INCHES 435 FEET 60 INCHES
531 FEET 48 INCHES 599 FEET 72 INCHES
825 FEET 24 INCHES

Formation	Color	Hard or Soft	Top	Bottom	Oil, Gas or Water	Depth Found	Remarks
Conductor			0	16			
Sand	white		16	40			
Slate	black		40	60			
Coal			60	62			
Slate	black		62	112			
Sand	white		112	160			
Coal	black		160	165			
Sand	white		165	230			
Lime	black		230	300			
Sand	white		300	348	water	230'	2 bailers per hour
Slate	black		348	355			
Sand	white		355	420	water	348'	4 blrs pr hr.
Slate	black		420	430			
Sand	white		430	435			
Coal	black		435	440			
Slate	black		440	531			
Coal	black		531	535			
Lime	black		535	599			
Coal	black		599	605			
Lime	black		605	720			
Sand	white		720	825			
Coal	black		825	827			
Slate			827	955			
Sand	white		955	1235			
Slate	black		1235	1240			
BIG DUNKARD	white		1240	1330			
Slate	black		1330	1400			
SALT SAND	white		1400	1718			
Slate & shells	white		1718	1760			
Red Rock			1760	1768			
Slate & Lime	white		1768	1880			
Red Rock			1880	1922			
Slate & Lime	white		1922	2095			
Red rock			2095	2135			
Slate	black		2135	2200			
MAXON SAND	white		2200	2220			
Slate	black		2220	2280			
					water	1548'	Filled up 900'



Formation	Color	Hard or Soft	Top	Bottom	Oil, Gas or Water	Depth Found	Remarks
Little Lime	black		2280	2310			
Pencil Cave	black		2310	2337			
BIG LIME	white		2337	2580			
BIG INJUN	red		2580	2600			
Slate & lime	black		2600	3010			
Shale	brown		3010	3025			
BEREA SAND	white		3025	3052	Oil	3044'-3051'	
		BEREA					
		TOTAL DEPTH		3055			

Date January 10, 19 50

THE PURE OIL COMPANY
BOX 551, NEWARK, OHIO

APPROVED _____, Owner

By Hard Hillis
Senior Superintendent (Title)