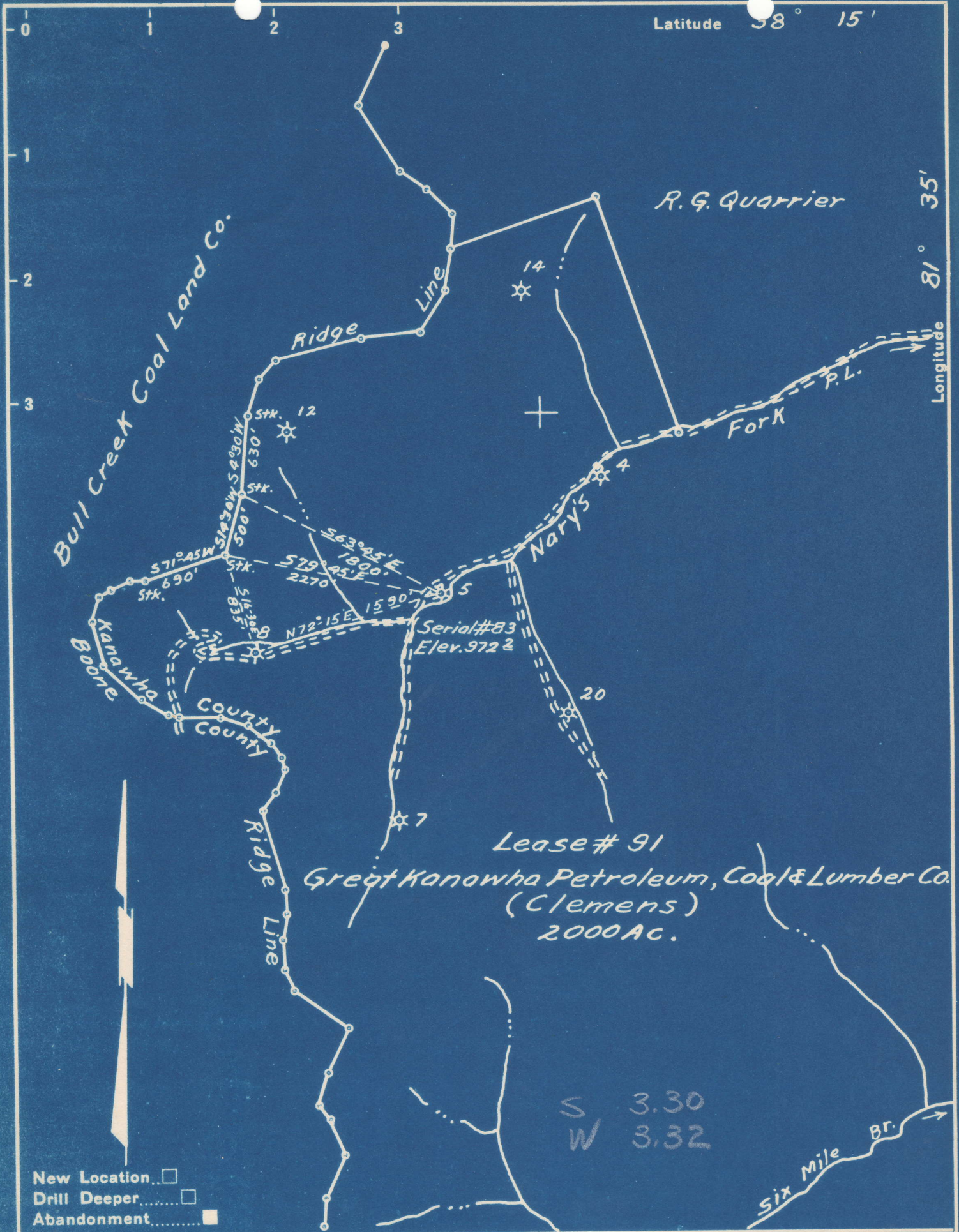


Latitude 38° 15'

Longitude 81° 35'



Company Owens, Libbey-Owens Gas Dept.  
 Address Box 4158 Charleston 4 W. Va.  
 Farm Great Kanawha Petroleum, Coal & Lumber Co.  
 Tract Clemens Acres 2000 Lease No. 91  
 Well (Farm) No. 5 Serial No. 83  
 Elevation (Spirit Level) 972.2 Top 5" casing  
 Quadrangle Peytona 2 S 3.30" W 3.30"  
 County Kanawha District Loudon  
 Engineer T.S. Flournoy  
 Engineer's Registration No. 269  
 File No. \_\_\_\_\_ Drawing No. \_\_\_\_\_  
 Date Feb 14, 1950 Scale 1" = 1000

STATE OF WEST VIRGINIA  
 DEPARTMENT OF MINES  
 OIL AND GAS DIVISION  
 CHARLESTON

**WELL LOCATION MAP**  
 FILE NO. KAN-697-A

- + Denotes location of well on United States Topographic Maps, scale 1 to 62,500, latitude and longitude lines being represented by border lines as shown.
- Denotes one inch spaces on border line of original tracing.

"IMPERIAL" TRACING CLOTH  
 K & E CO., N. Y.