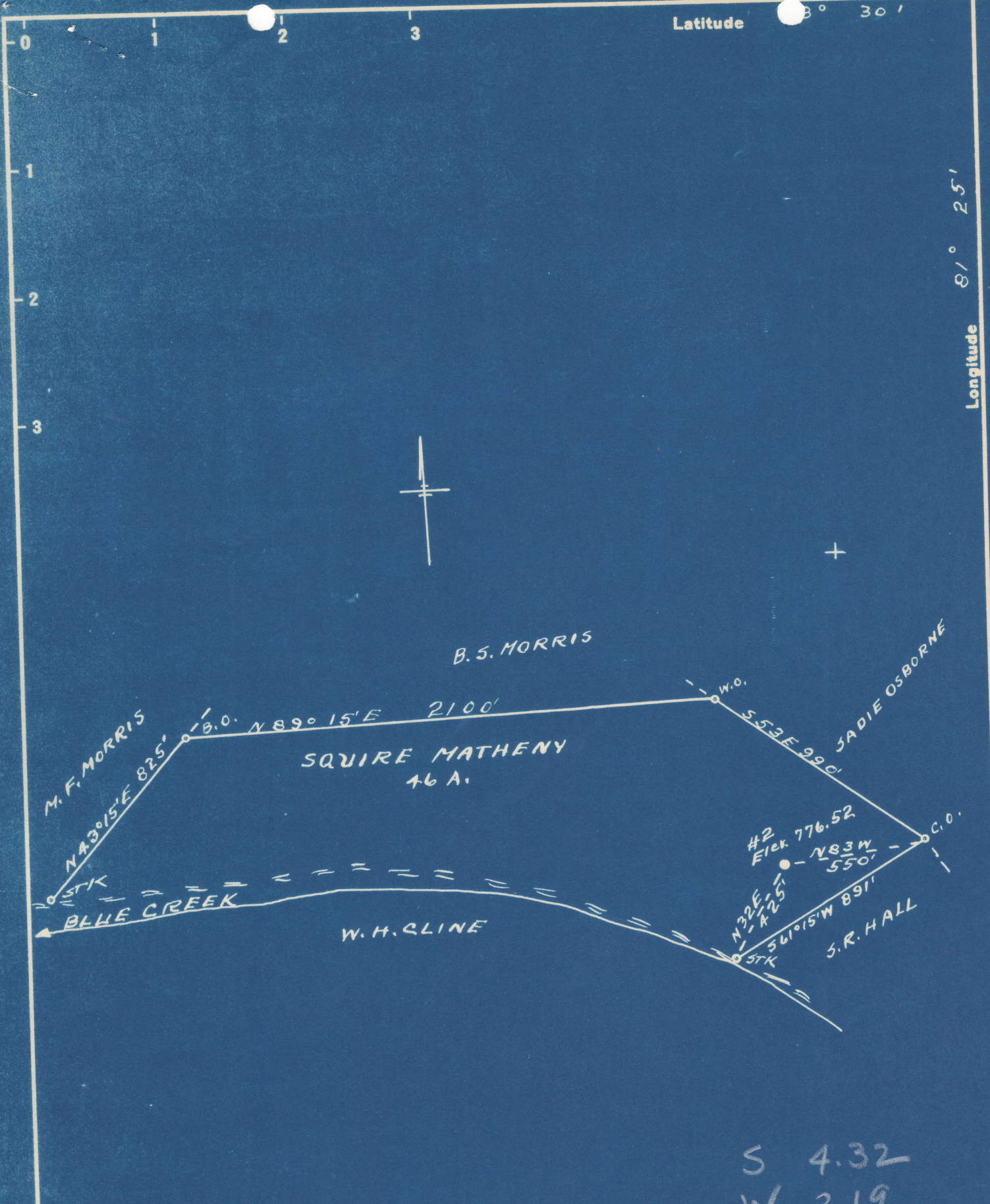


Latitude 38° 30'

Longitude 81° 25'



S 4.32
W 2.19

New Location...
 Drill Deeper...
 Abandonment...

Company OKMULGEE SUPPLY CORP.
 Address OKMULGEE, OKLA.
 Farm SQUIRE MATHENY
 Tract _____ Acres 46 Lease No. _____
 Well (Farm) No. 2 Serial No. _____
 Elevation (Spirit Level) 776.52
 Quadrangle CLENDENNIN NW
 County KANAWHA District ELK
 Engineer L. H. Dye
 Engineer's Registration No. 804
 File No. _____ Drawing No. _____
 Date 10-15-48 Scale 1" = 500'

STATE OF WEST VIRGINIA
 DEPARTMENT OF MINES
 OIL AND GAS DIVISION
 CHARLESTON

WELL LOCATION MAP
 FILE NO. KAN-713-A-2

+ Denotes location of well on United States Topographic Maps, scale 1 to 62,500, latitude and longitude lines being represented by border lines as shown.
 - Denotes one inch spaces on border line of original tracing.

6-0-217

SQUIRE MATHENY NO. 2 WELL.

713A

Elk District, Kanawha County, W. Va.
By Weston Spencer Corp., Roane Spencer Hotel, Spencer, W. Va.
Abandoned under permit Kan-.....-A?
On 46 acres, on Blue Creek.
Elevation, 776.52' L.
Drilling completed Dec. 6, 1916.
7" O. D. casing, 1515'; 2" tubing, 1925'.
Shot Dec. 6, 1916, with 60 qts., at 1822-1830 and 1882-1890'.
Oil well. Record to Dept. of Mines stamped April 6, 1950.
Record to RCT from Mrs. Griffith Sept. 9, 1950. Old File No. 1464.

	Top.	Bottom.
Coal	220	- 223
Salt Sand	860	- 1275
Maxton Sand	1404	- 1434
Big Lime	1500	- 1661
Sand (gas, 1745')	1730	- 1755
Sand (oil, 1825')	1825	- 1830
Sand	1883	- 1922
Total depth		1925



STATE OF WEST VIRGINIA
DEPARTMENT OF MINES
OIL AND GAS DIVISION

1464

WELL RECORD

Permit No. KAN-713-A

Oil or Gas Well X
(KIND)

Company Roane Spencer Corp.
Address Roane Spencer Hotel - Spencer, W. Va.
Farm Squire Matherly Acres 40
Location (waters) Blue Creek
Well No. 2 Elev. 770.52'
District Flk County Fanshwa
The surface of tract is owned in fee by _____
Address _____
Mineral rights are owned by _____
Address _____
Drilling commenced _____
Drilling completed December 6, 1916
Date Shot _____ From _____ To _____
With _____
Open Flow _____ /10ths Water in _____ Inch
_____ /10ths Merc. in _____ Inch
Volume _____ Cu. Ft.
Rock Pressure _____ lbs. _____ hrs.
Oil _____ bbls., 1st 24 hrs.
Fresh water _____ feet _____ feet
Salt water _____ feet _____ feet

Casing and Tubing	Used in Drilling	Left in Well	Packers
Size			Kind of Packer
16			
13			
10			Size of
8 1/4			
6 5/8 7" OD	1918'	1918'	Depth set
5 3/16			
3			Perf. top
2	1925'	1925'	Perf. bottom
Liners Used			Perf. top
			Perf. bottom

CASING CEMENTED _____ SIZE _____ No. Ft. _____ Date _____
COAL WAS ENCOUNTERED AT _____ FEET _____ INCHES
_____ FEET _____ INCHES _____ FEET _____ INCHES
_____ FEET _____ INCHES _____ FEET _____ INCHES

Formation	Color	Hard or Soft	Top	Bottom	Oil, Gas or Water	Depth Found	Remarks
Coal			220	223			
Salt Sand			660	1275			
Maxon Sand			1404	1434			
Big Lime			1500	1661'			
Sand			1730	1755			
Gas			1745				
Sand			1825	1830			
Oil			1825				
Sand			1883	1922			
Total Depth				1925			
SHOT RECORD			top	bottom			
12/6/1916	60 qts.		1822	1880			
			1882	1890			

