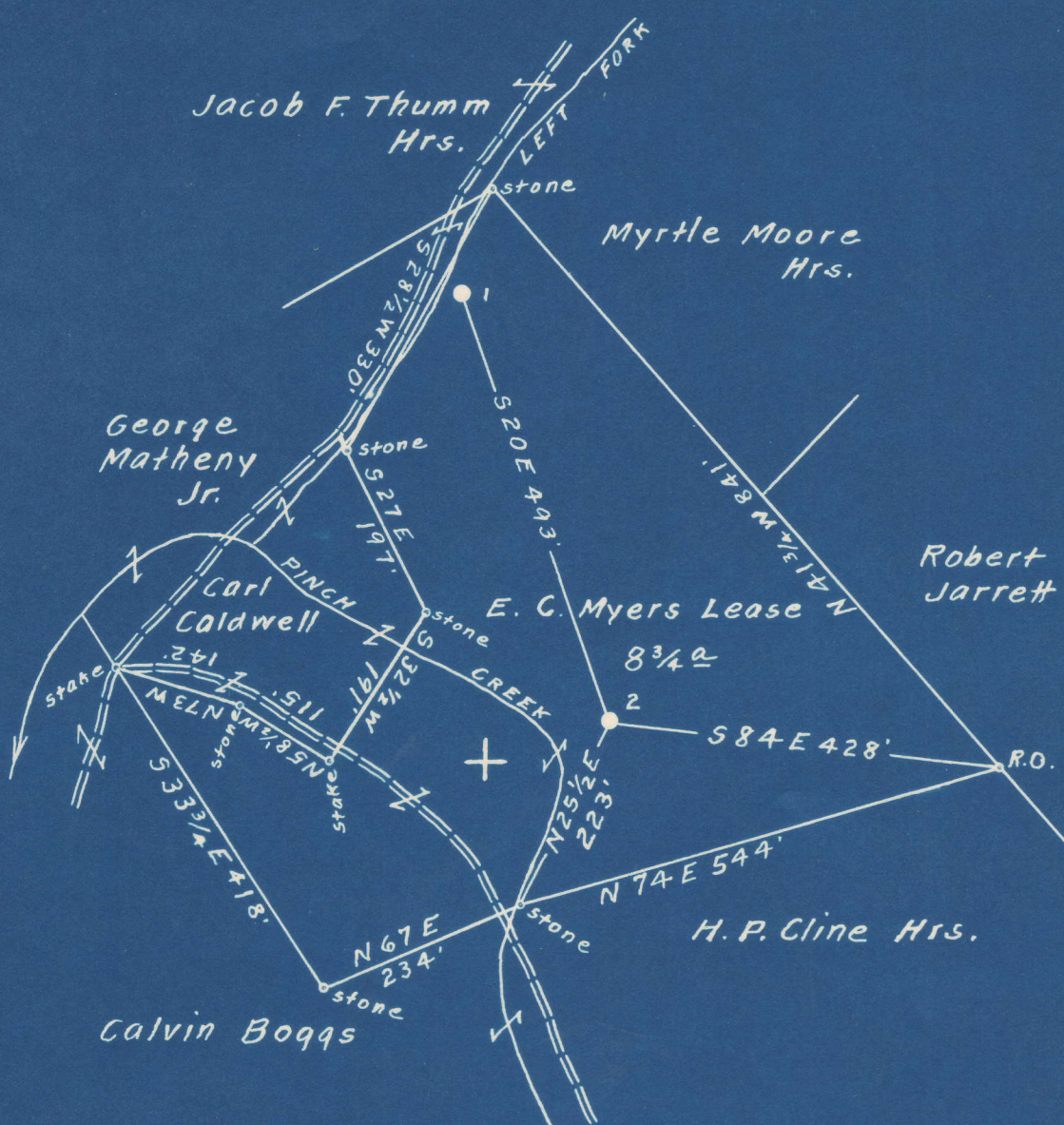


Latitude 38° 30'

Longitude 81° 25'

Scale 1" = 200 Feet



S 5.59  
W 3.67

Surface owned by Harry L. & Mildred L. Hawkins.  
Address: Mr. Harry L. Hawkins, Pinch, Kanawha Co., W. Va.  
No commercial Coal, if any Coal, it belongs to the owners of the surface.

- New Location
- Drill Deeper
- Abandonment

On 800' Map No. 100. Sqs. 5 70 W 50.

Company Raad Supply Co.  
 Address Salem, W. Va.  
 Farm E. C. Myers  
 Tract \_\_\_\_\_ Acres 8 3/4 Lease No. \_\_\_\_\_  
 Well (Farm) No. 2 Serial No. \_\_\_\_\_  
 Elevation (Spirit Level) Floor - 662.74  
Ground - 660.44  
 Quadrangle Clendenin  
 County Kanawha District E1K  
 Engineer Elworth Haines  
 Engineer's Registration No. 2221  
 File No. \_\_\_\_\_ Drawing No. \_\_\_\_\_  
 Date July 10th, 1950. Scale 1" = 200 Feet

STATE OF WEST VIRGINIA  
DEPARTMENT OF MINES  
OIL AND GAS DIVISION  
CHARLESTON

WELL LOCATION MAP  
FILE NO. KAN-742-A

+ Denotes location of well on United States Topographic Maps, scale 1 to 62,500, latitude and longitude lines being represented by border lines as shown.

- Denotes one inch spaces on border line of original tracing.

6-0 217





*allen*

1496

STATE OF WEST VIRGINIA  
DEPARTMENT OF MINES  
OIL AND GAS DIVISION

WELL RECORD

Permit No. Kan-742-82 Oil or Gas Well \_\_\_\_\_ (KIND)

Company Raad Supply Company  
Address 184 East Main St., Salem, W. Va.  
Farm E. C. Myers Acres 8-3/4  
Location (waters) Pinch Creek  
Well No. 2 Elev. 660.44  
District Elk County Kanawha  
The surface of tract is owned in fee by Harry L. & Mildred L. Hawkins Address Pinch, W. Va.  
Mineral rights are owned by No Coal

Casing and Tubing	Used in Drilling	Left in Well	Packers
Size			Kind of Packer
16			
13			
10			Size of
8 1/4	500'	500'	
6 5/8	1480'	1480'	Depth set
5 3/16			
3			Perf. top
2	1735'	1735'	Perf. bottom
Liners Used			Perf. top
			Perf. bottom

Drilling commenced No record  
Drilling completed \_\_\_\_\_  
Date Shot \_\_\_\_\_ From \_\_\_\_\_ To \_\_\_\_\_  
With \_\_\_\_\_  
Open Flow \_\_\_\_\_ /10ths Water in \_\_\_\_\_ Inch  
\_\_\_\_\_ /10ths Merc. in \_\_\_\_\_ Inch  
Volume \_\_\_\_\_ Cu. Ft.  
Rock Pressure \_\_\_\_\_ lbs. \_\_\_\_\_ hrs.  
Oil \_\_\_\_\_ bbls., 1st 24 hrs.  
Fresh water \_\_\_\_\_ feet \_\_\_\_\_ feet  
Salt water \_\_\_\_\_ feet \_\_\_\_\_ feet

CASING CEMENTED No SIZE \_\_\_\_\_ No. Ft. \_\_\_\_\_ Date \_\_\_\_\_  
COAL WAS ENCOUNTERED AT 385 FEET 24 INCHES  
520 FEET 72 INCHES FEET INCHES  
FEET INCHES FEET INCHES

Formation	Color	Hard or Soft	Top	Bottom	Oil, Gas or Water	Depth Found	Remarks
Coal			385	387			
Coal			514	520			
Salt Sand			980	1505	Water - 1060'		
Big Lime			1670	1824			
Big Injun			1824	1829			
Squaw Sand			1912	1938	Oil and gas - 1918'		
Total Depth -				1938'			

