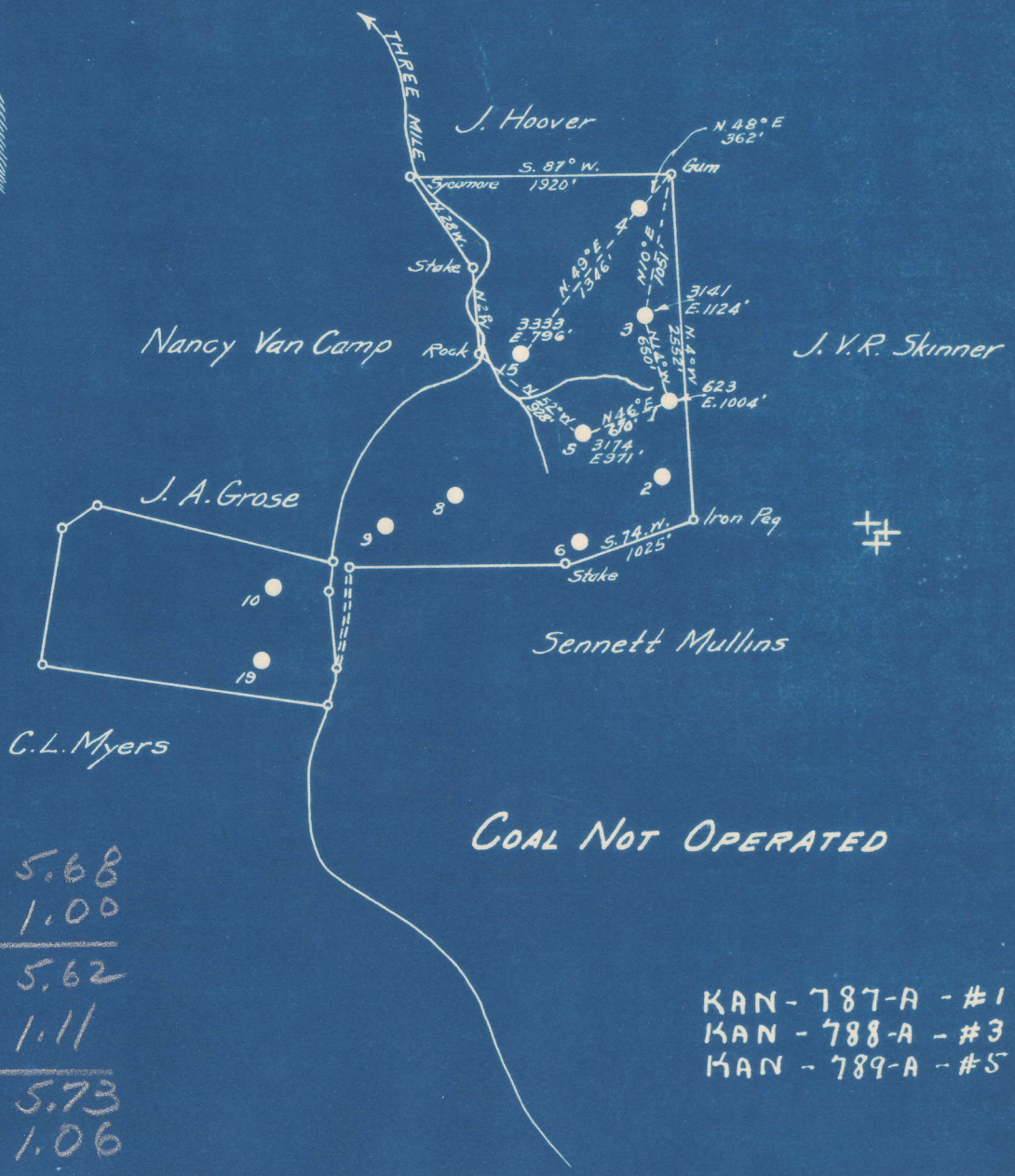


Latitude  $38^{\circ} 30'$

Longitude  $81^{\circ} 25'$



787-A	S	5.68
#1	W	1.00
788-A	S	5.62
#3	W	1.11
789-A	S	5.73
#5	W	1.06

KAN-787-A - #1  
 KAN-788-A - #3  
 KAN-789-A - #5

- New Location...
- Drill Deeper.....
- Abandonment.....

Company SAM BEREN  
 Address 516-4th ST, MARIETTA, OHIO  
 Farm G.W. BELCHER  
 Tract \_\_\_\_\_ Acres 183 Lease No. 738  
 Well (Farm) No. 1-3-5 Serial No. 628  
 Elevation (Spirit Level) SEE ABOVE 3174  
 Quadrangle CLENDENIN  
 County KANAWHA District ELK NW  
 Engineer W.C. Kula  
 Engineer's Registration No. 9  
 File No. \_\_\_\_\_ Drawing No. \_\_\_\_\_  
 Date 9-13-49 Scale 1"-1320'

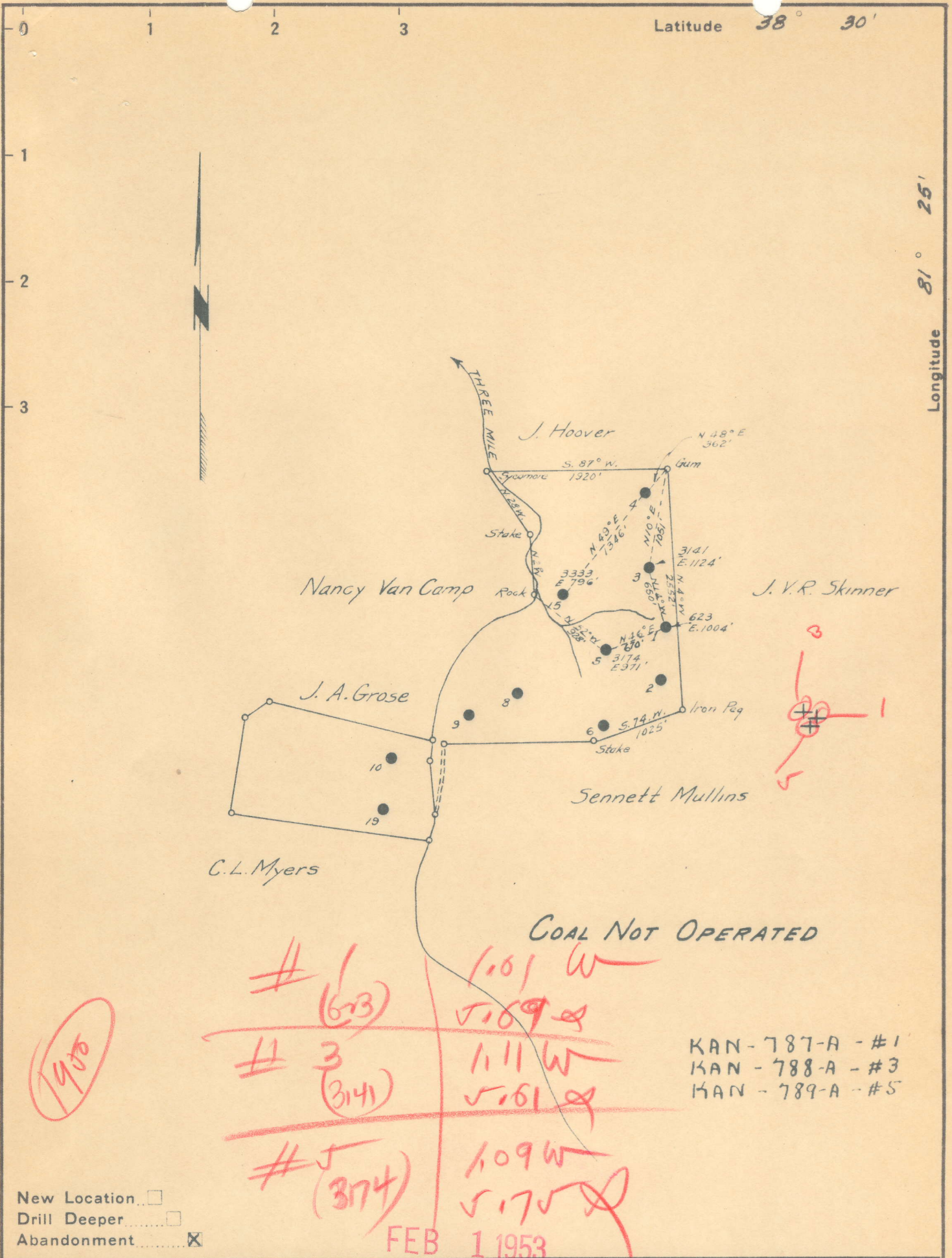
STATE OF WEST VIRGINIA  
 DEPARTMENT OF MINES  
 OIL AND GAS DIVISION  
 CHARLESTON

**WELL LOCATION MAP**

FILE NO. \_\_\_\_\_

+ Denotes location of well on United States Topographic Maps, scale 1 to 62,500, latitude and longitude lines being represented by border lines as shown.

- Denotes one inch spaces on border line of original tracing.



New Location   
 Drill Deeper   
 Abandonment

Company SAM BEREN  
 Address 516-4th St., MARIETTA, OHIO  
 Farm G.W. BELCHER  
 Tract \_\_\_\_\_ Acres 183 Lease No. 738  
 Well (Farm) No. 1-3-5 Serial No. 623  
 Elevation (Spirit Level) SEE ABOVE 3174  
 Quadrangle CLENDENIN  
 County KANAWHA District ELK  
 Engineer B.E. Kula  
 Engineer's Registration No. 9  
 File No. \_\_\_\_\_ Drawing No. \_\_\_\_\_  
 Date 9-13-49 Scale 1" = 1320'

STATE OF WEST VIRGINIA  
 DEPARTMENT OF MINES  
 OIL AND GAS DIVISION  
 CHARLESTON

WELL LOCATION MAP  
 FILE NO. 787-A, 788-A-789-A

+ Denotes location of well on United States Topographic Maps, scale 1 to 62,500, latitude and longitude lines being represented by border lines as shown.  
 - Denotes one inch spaces on border line of original tracing.



STATE OF WEST VIRGINIA  
DEPARTMENT OF MINES  
OIL AND GAS DIVISION

1508

WELL RECORD

Permit No. AB 789-A Oil or Gas Well X (KIND)

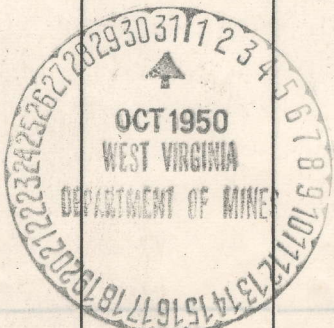
Company Valley Steel Products Company  
Address Saint Louis, Mo.  
Farm G. W. Belcher Acres 183  
Location (waters) Blue Creek  
Well No. 5 (3174) Elev. 971'  
District Elk County Kanawha  
The surface of tract is owned in fee by G.W. Belcher Heirs  
Address Blue Creek, W. Va.  
Mineral rights are owned by Coal Not Operated  
Address \_\_\_\_\_

Casing and Tubing	Used in Drilling	Left in Well	Packers
Size			Kind of Packer
16			
13			Size of
10			Depth set
8 1/4	740'	None	
6 5/8	1628'	1628'	
5 3/16	1946'	1946'	
3			Perf. top
2			Perf. bottom
Liners Used			Perf. top
			Perf. bottom

Drilling commenced June 19, 1915  
Drilling completed July 31, 1915  
Date Shot 8-18-15 From \_\_\_\_\_ To \_\_\_\_\_  
With 20 qts.  
Open Flow /10ths Water in \_\_\_\_\_ Inch  
/10ths Merc. in \_\_\_\_\_ Inch  
Volume \_\_\_\_\_ Cu. Ft.  
Rock Pressure \_\_\_\_\_ lbs. \_\_\_\_\_ hrs.  
Oil \_\_\_\_\_ bbls., 1st 24 hrs.  
Fresh water \_\_\_\_\_ feet \_\_\_\_\_ feet  
Salt water \_\_\_\_\_ feet \_\_\_\_\_ feet

CASING CEMENTED \_\_\_\_\_ SIZE \_\_\_\_\_ No. Ft. \_\_\_\_\_ Date \_\_\_\_\_  
COAL WAS ENCOUNTERED AT 210 FEET 36 INCHES  
\_\_\_\_\_ FEET \_\_\_\_\_ INCHES FEET \_\_\_\_\_ INCHES  
\_\_\_\_\_ FEET \_\_\_\_\_ INCHES FEET \_\_\_\_\_ INCHES

Formation	Color	Hard or Soft	Top	Bottom	Oil, Gas or Water	Depth Found	Remarks
Coal			210	213			
Salt Sand			920	1440			
Little Lime			1575	1599			
Pencil Cave			1614	1619			
Big Lime			1619	1784			
Weir Sand			1900	2039			
TOTAL DEPTH				2041			



FEB 23 1951