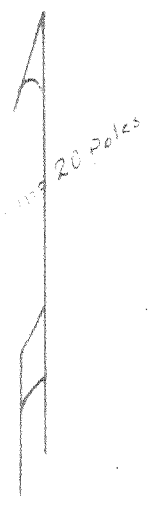


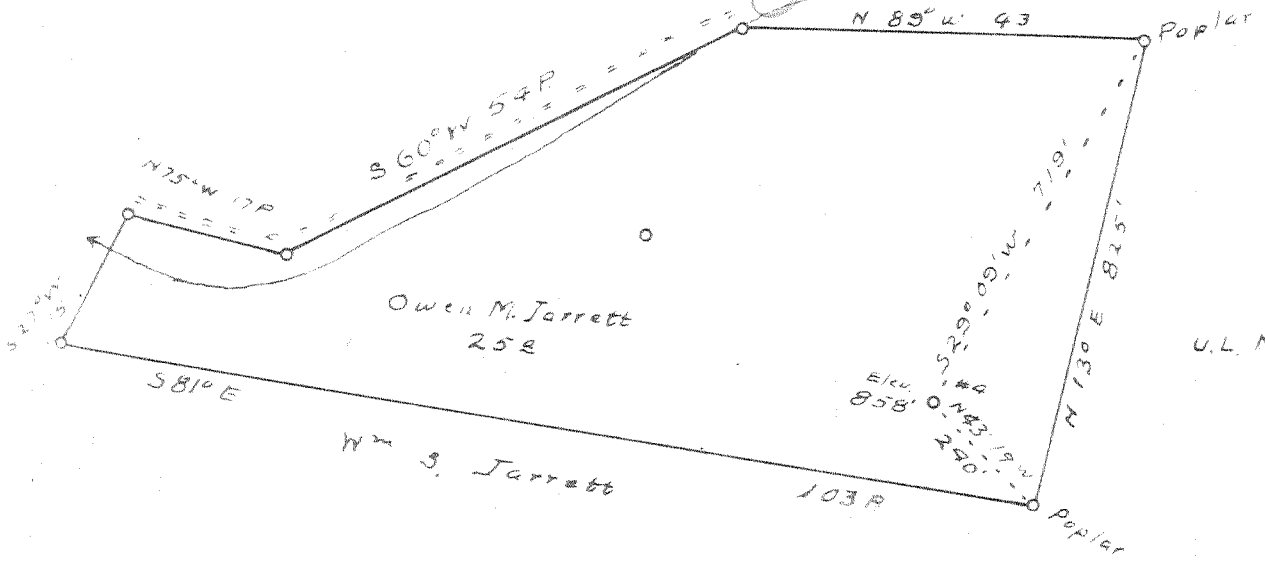
Latitude 38° 30'

Longitude 81° 25'



Jacob F. Thurman Mrs.

+ Left Fork of Pinch Cr.



U.L. Myers

1930

3.3 W  
5.6

New Location   
 Drill Deeper   
 Abandonment  No coal sold under this farm

FEB 1 1953

Company Clyde McPeck  
 Address 451 Davisville, W.Va.  
 Farm Owen M. Jarrett  
 Tract \_\_\_\_\_ Acres 25 Lease No. \_\_\_\_\_  
 Well (Farm) No. 4 Serial No. \_\_\_\_\_  
 Elevation (Spirit Level) 858'  
 Quadrangle Clendenin  
 County Kanawha District E14  
 Engineer by A. Meredith  
 Engineer's Registration No. \_\_\_\_\_  
 File No. \_\_\_\_\_ Drawing No. \_\_\_\_\_  
 Date Oct 5 50 Scale 1" = 20 Poles

STATE OF WEST VIRGINIA  
 DEPARTMENT OF MINES  
 OIL AND GAS DIVISION  
 CHARLESTON

WELL LOCATION MAP  
 FILE NO. KAN-792-A

+ Denotes location of well on United States Topographic Maps, scale 1 to 62,500, latitude and longitude lines being represented by border lines as shown.

- Denotes one inch spaces on border line of original tracing.

OWEN M. JARRETT O.G.A. — CLYDE McPECK — KAN-792A



