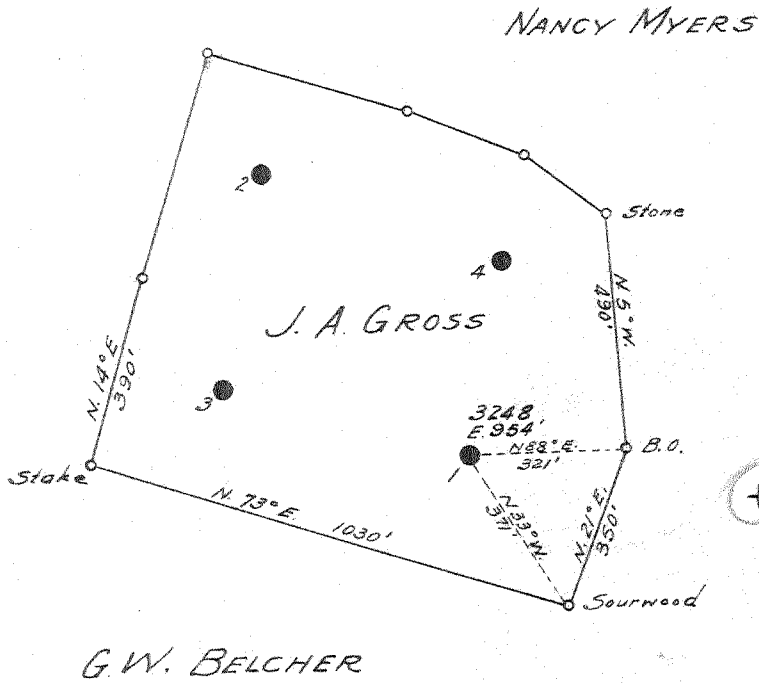


F. G. WOODY



COAL NOT OPERATED

*1.62 W  
5.8 D*

- New Location
- Drill Deeper
- Abandonment

Company SAM BEREN  
 Address 516-4th ST., MARIETTA, OHIO  
 Farm J. A. GROSS  
 Tract \_\_\_\_\_ Acres 22 Lease No. 736  
 Well (Farm) No. 1 Serial No. 3248  
 Elevation (Spirit Level) 954  
 Quadrangle GLENDENIN  
 County KANAWHA District FLK  
 Engineer B. E. Webb  
 Engineer's Registration No. 9  
 File No. \_\_\_\_\_ Drawing No. \_\_\_\_\_  
 Date 9-27-49 Scale 1"-400'

STATE OF WEST VIRGINIA  
 DEPARTMENT OF MINES  
 OIL AND GAS DIVISION  
 CHARLESTON

WELL LOCATION MAP  
 FILE NO. KAN-811-A

+ Denotes location of well on United States Topographic Maps, scale 1 to 62,500, latitude and longitude lines being represented by border lines as shown.

- Denotes one inch spaces on border line of original tracing.

*6-0 217*

J. A. GROSS NO. 1 WELL.

Elk District, Kanawha County, W. Va. 81A  
By Valley Steel Products Co., St. Louis, Mo.  
Abandoned under permit Kan-.....0A?  
On 22 acres, on Threemile Creek.

Elevation, 954' L.

Coal not operated.

Drilling commenced Feb. 26, 1916; completed April 19, 1916.

Shot April 19, 1916, with 70 qts.

8 $\frac{1}{4}$ " casing, 650' (pulled); 6 $\frac{5}{8}$ " , 1622'.

Oil well. Record to Dept. of Mines stamped Jan. 15, 1951.

Record to RCT from Mrs. Griffith June 24, 1951. Old File No. 1543.

	Top.	Bottom.
Salt Sand	900	- 1395
Little Lime	1560	- 1592
Pencil Cave	1618	- 1622
Big Lime	1622	- 1782
Weir Sand	1852	- 2031
Total depth		2037



STATE OF WEST VIRGINIA  
DEPARTMENT OF MINES  
OIL AND GAS DIVISION

1543

WELL RECORD

Permit No. KAN-811-A

Oil or Gas Well (KIND)

Company Valley Steel Products Company  
Address Saint Louis, Mo.  
Farm J. A. Gross Acres 22  
Location (waters) Three Mile  
Well No. 1 Elev. 954'  
District Elk County Kanawha  
The surface of tract is owned in fee by \_\_\_\_\_  
Address \_\_\_\_\_  
Mineral rights are owned by Coal Not Operated  
Address \_\_\_\_\_

Drilling commenced Feb. 26, 1916  
Drilling completed April 19, 1916  
Date Shot 4-19-16 From \_\_\_\_\_ To \_\_\_\_\_  
With 70qts.  
Open Flow \_\_\_\_\_/10ths Water in \_\_\_\_\_ Inch  
\_\_\_\_\_ /10ths Merc. in \_\_\_\_\_ Inch  
Volume \_\_\_\_\_ Cu. Ft.  
Rock Pressure \_\_\_\_\_ lbs. \_\_\_\_\_ hrs.  
Oil \_\_\_\_\_ bbls., 1st 24 hrs.  
Fresh water \_\_\_\_\_ feet \_\_\_\_\_ feet  
Salt water \_\_\_\_\_ feet \_\_\_\_\_ feet

Casing and Tubing	Used in Drilling	Left in Well	Packers
Size			
16			Kind of Packer
13			
10			Size of
8 1/4	650'	None	
6 5/8	1622'	1622'	Depth set
5 3/16			
3			Perf. top
2			Perf. bottom
Liners Used			Perf. top
			Perf. bottom

CASING CEMENTED \_\_\_\_\_ SIZE \_\_\_\_\_ No. Ft. \_\_\_\_\_ Date \_\_\_\_\_

COAL WAS ENCOUNTERED AT \_\_\_\_\_ FEET \_\_\_\_\_ INCHES  
\_\_\_\_\_ FEET \_\_\_\_\_ INCHES FEET \_\_\_\_\_ INCHES  
\_\_\_\_\_ FEET \_\_\_\_\_ INCHES FEET \_\_\_\_\_ INCHES

Formation	Color	Hard or Soft	Top	Bottom	Oil, Gas or Water	Depth Found	Remarks
Salt Sand			900	1395	C		
Lt. Lime			1560	1592			
Pencil Cave			1618	1622			
Big Lime			1622	1782			
Weir Sand			1852	2031			
TOTAL DEPTH				2037			

