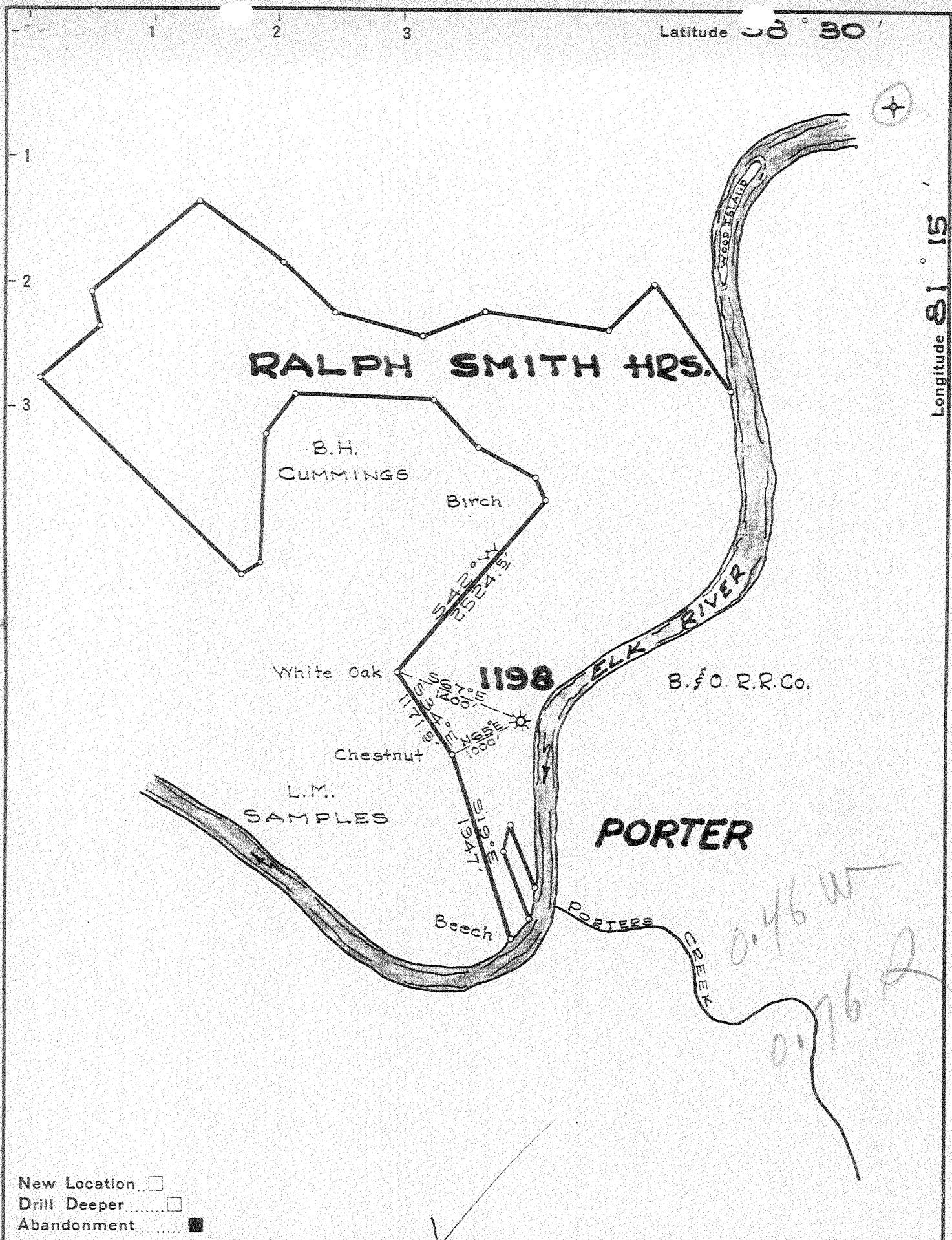


Latitude 38° 30'

Longitude 81° 15'



New Location   
 Drill Deeper   
 Abandonment

Company UNITED FUEL GAS CO.  
 Address CHARLESTON, W. VA.  
 Farm RALPH SMITH HRS.  
 Tract \_\_\_\_\_ Acres 363 Lease No. 7423  
 Well (Farm) No. 1 Serial No. 1198  
 Elevation (Spirit Level) 645.  
 Quadrangle CLENDENIN  
 County KANAWHA District BIG SANDY  
 Engineer \_\_\_\_\_  
 Engineer's Registration No. 662  
 File No. 82-67 Drawing No. \_\_\_\_\_  
 Date JULY 29, 1951 Scale 1"=1320'

STATE OF WEST VIRGINIA  
 DEPARTMENT OF MINES  
 OIL AND GAS DIVISION  
 CHARLESTON

WELL LOCATION MAP  
 FILE NO. KAN-828-A

+ Denotes location of well on United States Topographic Maps, scale 1 to 62,500, latitude and longitude lines being represented by border lines as shown.

- Denotes one inch spaces on border line of original tracing.

IMPERIAL TRACING CLOTH  
 K & F CO., N. Y.

RALPH SMITH HRS No. 1 (1198) - U. F. G. Co. - KAN-828-A

RALPH SMITH HEIRS NO. 1198 WELL.

Big Sandy District, Kanawha County, W. Va.  
 By United Fuel Gas Co., Box 1273, Charleston, 25, W. Va.  
 Abandoned under permit Kan-.....-A?  
 On 363 acres, on Elk River.  
 Elevation, 645' L.  
 Minerals owned by Ralph Smith et al., Corton, W. Va.  
 Drilling commenced Nov. 1, 1920; completed Dec. 17, 1920.  
 Open flow, 10/10ths Merc. in 3".  
 Volume, 1,247,000 cu. ft.  
 Rock pressure, 320 lbs.  
 10" casing, 74' (66' left in); 8½", 1070' (pulled); 6⅝", 1305'; 3" tubing,  
 1399'; 1½", 1398'.  
 Coal was encountered at 330-335'.  
 Par. anchor packer, 3 x 5<sup>3</sup>/<sub>16</sub> x 16, set at 1310'.  
 Gas well. Record to Dept. of Mines dated March 9, 1951.  
 Record to RCT from Mrs. Griffith Aug. 17, 1951. Old File No. 1574.

	Top.	Bottom.
Soil	0	15
Sand	15	30
Slate	30	40
Flint	40	52
Slate	52	80
Lime	80	100
Sand	100	130
Slate	130	160
Sand	160	170
Slate	170	280
Sand	280	330
Coal	330	335
Sand	335	350
Slate	350	390
Sand	390	440
Slate	440	525
Lime	525	535
Gas Sand (gas, 540'; oil show, 550')	535	638
Slate	638	643
Salt Sand	643	1008
Slate	1008	1030
Sand	1030	1045
Lime	1045	1063
Red rock	1063	1070
Lime	1070	1090
Red rock	1090	1105
Slate	1105	1110
Maxton Sand (gas, 1140')	1110	1195
Little Lime	1195	1220
Slate	1220	1228
Big Lime (hole reduced at 1300'; gas, 1314'; SIM, 1318')	1228	1326
Big Injun Sand (gas, 1342-47' SIM)	1326	1356
Lime	1356	1370
Slate	1370	1387
Total depth (SIM)		1387



STATE OF WEST VIRGINIA  
DEPARTMENT OF MINES  
OIL AND GAS DIVISION

1574

WELL RECORD

Permit No. KAN-828-A

Abandonment

Oil or Gas Well Gas  
(KIND)

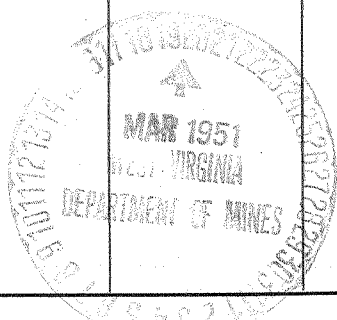
Company United Fuel Gas Company  
Address P.O. Box 1273, Charleston 25, W. Va.  
Farm Ralph Smith, Heirs Acres 363  
Location (waters) Elk River  
Well No. 1198 Elev. 645 L  
District Big Sandy County Kanawha  
The surface of tract is owned in fee by \_\_\_\_\_  
Address \_\_\_\_\_  
Mineral rights are owned by Ralph Smith, etal  
Corton Address West Virginia  
Drilling commenced 11-1-20  
Drilling completed 12-17-20  
Date Shot not given From \_\_\_\_\_ To \_\_\_\_\_  
With \_\_\_\_\_  
Open Flow \_\_\_\_\_/10ths Water in \_\_\_\_\_ Inch  
10/10ths Merc. in 3 Inch  
Volume 1,247 M Cu. Ft.  
Rock Pressure 320 lbs. not given hrs.  
Oil \_\_\_\_\_ bbls., 1st 24 hrs.  
Fresh water \_\_\_\_\_ feet \_\_\_\_\_ feet  
Salt water \_\_\_\_\_ feet \_\_\_\_\_ feet

Casing and Tubing	Used in Drilling	Left in Well	Packers
Size			Kind of Packer
16			<u>Par Anchor</u>
13			Size of <u>3"x5-3/16"x16</u>
10	<u>74</u>	<u>66</u>	Depth set <u>1310</u>
8 1/4	<u>1070</u>	<u>Pulled</u>	
6 3/8	<u>1305</u>	<u>1305</u>	
5 3/16			
3		<u>1399</u>	Perf. top _____
<del>2 1/2</del>		<u>1398</u>	Perf. bottom _____
Liners Used			Perf. top _____
			Perf. bottom _____

CASING CEMENTED \_\_\_\_\_ SIZE \_\_\_\_\_ No. Ft. \_\_\_\_\_ Date \_\_\_\_\_

COAL WAS ENCOUNTERED AT 330 FEET 60 INCHES  
\_\_\_\_\_  
FEET INCHES FEET INCHES  
\_\_\_\_\_  
FEET INCHES FEET INCHES

Formation	Color	Hard or Soft	Top	Bottom	Oil, Gas or Water	Depth Found	Remarks
Soil			0	15			
Sand			15	30			
Slate			30	40			
Flint			40	52			
Slate			52	80			
Lime			80	100			
Sand			100	130			
Slate			130	160			
Sand			160	170			
Slate			170	280			
Sand			280	330			
Coal			330	335			
Sand			335	350			
Slate			350	390			
Sand			390	440			
Slate			440	525			
Lime			525	535	Gas	540	
Gas Sand			535	638	Oil, Show	550	
Slate			638	643			
Salt Sand			643	1008			
Slate			1008	1030			
Sand			1030	1045			
Lime			1045	1063			
Red Rock			1063	1070			
Lime			1070	1090			
Red Rock			1090	1105			
Slate			1105	1110	Gas	1140	Maxon
Maxon Sand			1110	1195			
Little Lime			1195	1220		1300	Hole reduced
Slate			1220	1228	Gas	1314	Lime
						1318 SL	
Big Lime			1228	1326	Gas	1342-1347 SL	Injun
Injun			1326	1356			
Lime			1356	1370			
Slate			1370	1387			
Total Depth				1387 SL			



(Over)

AUG 17 1951

