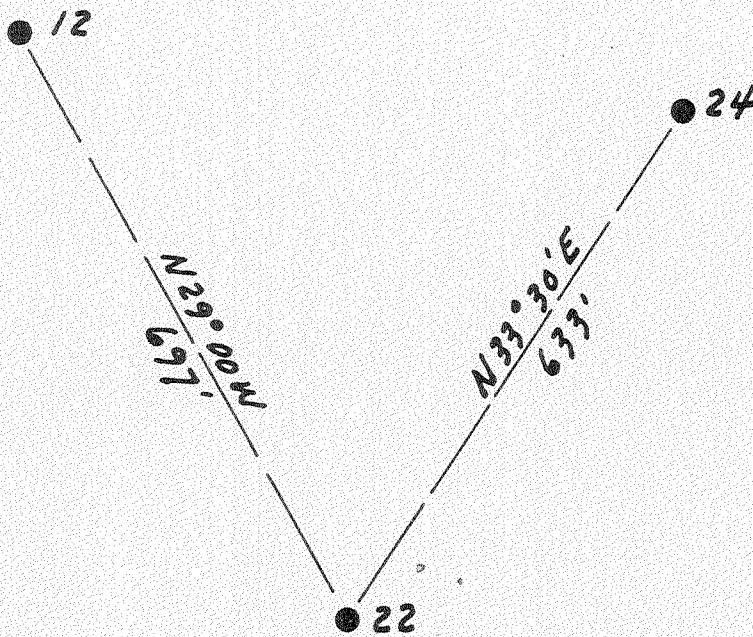


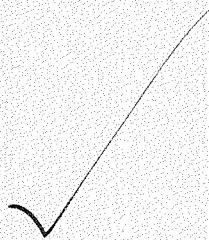
Latitude 38° 10'

Longitude 81° 25'

Williams Coal Co
12000 ac



New Location
 Drill Deeper
 Abandonment



9.02 W
3.33 D

Company The Pure Oil Co.
 Address Newark, Ohio Box 551
 Farm Williams Coal Co.
 Tract _____ Acres 12000 Lease No. 5012
 Well (Farm) No. 22 Serial No. 340
 Elevation (Spirit Level) 1581
 Quadrangle Montgomery
 County Kanawha District Cabin Creek
 Engineer J. B. Hunter
 Engineer's Registration No. Ohio-2912
 File No. _____ Drawing No. _____
 Date 5-1-51 Scale 1" = 200'

STATE OF WEST VIRGINIA
 DEPARTMENT OF MINES
 OIL AND GAS DIVISION
 CHARLESTON

WELL LOCATION MAP
 FILE NO. KAN-839-A

+ Denotes location of well on United States Topographic Maps, scale 1 to 62,500, latitude and longitude lines being represented by border lines as shown.

- Denotes one inch spaces on border line of original tracing.

6-6-240

WILLIAMS COAL CO., NO. 22 - THE PURE OIL CO. - KAN-839-A

Cabin Creek District, Kanawha County, W. Va.

By The Pure Oil Co., Box 551, Newark, Ohio.

Abandoned under permit Kan-.....-A?

On 12,000 acres.

Elevation, 1581' L.

Surface and minerals owned by Shonk Land Co., 802 Kanawha Banking & Trust Co. Bldg., Charleston, W. Va.

Drilling commenced Jan. 26, 1916; completed May 3, 1916.

Shot May 3, 1916, at 3243-3260', with 60 qts. glycerine.

Oil, 125 bbls., 1st 24 hrs.

Fresh water, 80, 200, 400, and 970'.

Salt water at 1760'.

10³/₄" casing, 1070'; 8¹/₂" 1980' (pulled); 6⁵/₈" 2581'; 2" tubing, 3266'.

Coal was encountered at 300-303, 970-973, 1020-1024, and 1340-1344'.

Oil well. Record to Dept. of Mines dated May 10, 1951.

Record to RCT from Mrs. Griffith Jan. 16, 1952. Old File No. 1632.

	Top.	Bottom.
Conductor	0	10
Sand (water, 80', $\frac{1}{2}$ bailer per hour)	10	300
Coal //(water, 200', 2 blrs. per hour)//	300	303
Sand	303	375
Slate	375	400
Sand (water, 400', 3 blrs. per hour)	400	500
Slate	500	525
Sand	525	575
Shells	575	600
Sand	600	700
Slate and shells	700	725
Sand	725	750
Black slate	750	770
Sand	770	870
Hard slate	870	880
Sand	880	915
Black slate	915	925
Sand	925	970
Coal (water, 970', 7 blrs. per hour)	970	973
Sand	973	1020
Coal	1020	1024
Slate and shells	1024	1055
Black sand	1055	1070
White sand	1070	1080
Slate and shells	1080	1105
Dark sand	1105	1140
White sand	1140	1300
Black slate	1300	1335
Slate and shells	1335	1340
Coal	1340	1344
Slate and shells	1344	1360
Black sand	1360	1390
Lime	1390	1420
Sand	1420	1510
Grampus Sand	1510	1575
Slate and shells	1575	1640
Salt Sand (water, 1760')	1640	1940
Slate and lime shells	1940	2000
White limestone	2000	2085
Red rock	2085	2120
Slate and shells	2120	2295

WILLIAMS COAL CO. NO. 22 WELL (Continued).

	Top.	Bottom.
Blue lime	2295	- 2330
Red rock	2330	- 2350
Slate and shells	2350	- 2400
Limestone	2400	- 2420
Slate and shells	2420	- 2505
Little Lime	2505	- 2540
Slate and shells	2540	- 2576
Big Lime	2576	- 2790
Red rock	2790	- 2800
Big Injun Sand	2800	- 2850
Slate and shells	2850	- 3215
Brown shale	3215	- 3227
Berea Sand	3227	- 3261
Black lime	3261	- 3266
Total depth		3266



STATE OF WEST VIRGINIA
DEPARTMENT OF MINES
OIL AND GAS DIVISION

1632

WELL RECORD

Permit No. KAN-839-A

Oil or Gas Well Oil
(KIND)

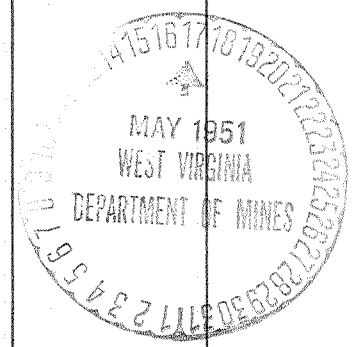
Company The Pure Oil Company
 Address P.O. Box 551, Newark, Ohio
 Farm Williams Coal Company Acres 12,000
 Location (waters) _____
 Well No. 22 Elev. 1581'
 District Cabin Creek County Kanawha
 The surface of tract is owned in fee by Shonk Land Company
802 Kanawha Banking & Trust Co. Bldg.
Charleston, West Virginia
 Mineral rights are owned by Same as above
 Address _____
 Drilling commenced January 26, 1916
 Drilling completed May 3, 1916
 Date Shot 5/3/16 From 3243 To 3260
 With 60 Qts. glycerine
 Open Flow /10ths Water in _____ Inch
 /10ths Merc. in _____ Inch
 Volume _____ Cu. Ft.
 Rock Pressure _____ lbs. _____ hrs.
 Oil 125 bbls., 1st 24 hrs.
 Fresh water 80' 200' feet 400' 970' feet
 Salt water 1760' feet _____ feet

Casing and Tubing	Used in Drilling	Left in Well	Packers
Size			
16			Kind of Packer
13			
10 <u>-3/4"</u>	<u>1070'</u>	<u>1070'</u>	Size of
8 1/4	<u>1980'</u>	<u>None</u>	
6 5/8	<u>2581'</u>	<u>2581'</u>	Depth set
5 3/16			
3		<u>3266'</u>	Perf. top
2			Perf. bottom
Liners Used			Perf. top
			Perf. bottom

CASING CEMENTED _____ SIZE _____ No. Ft. _____ Date _____

COAL WAS ENCOUNTERED AT 300 FEET 36 INCHES
970 FEET 36 INCHES 1020 FEET 48 INCHES
1340 FEET 48 INCHES _____ FEET _____ INCHES

Formation	Color	Hard or Soft	Top	Bottom	Oil, Gas or Water	Depth Found	Remarks
Conductor			0	10			
Sand			10	300	Water	80'	1 Bailer per hr.
Coal			300	303	Water	200'	2 Bailleurs per hr.
Sand			303	375			
Slate			375	400			
Sand			400	500	Water	400'	3 Bailleurs per hr.
Slate			500	525			
Sand			525	575			
Shells			575	600			
Sand			600	700			
Slate & Shells			700	725			
Sand			725	750			
Black Slate			750	770			
Sand			770	870			
Hard Slate			870	880			
Sand			880	915			
Black Slate			915	925			
Sand			925	970			
Coal			970	973	Water	970'	7 Bailleurs per hr.
Sand			973	1020			
Coal			1020	1024			
Slate & Shells			1024	1055			
Black Sand			1055	1070			
White Sand			1070	1080			
Slate & Shells			1080	1105			
Dark Sand			1105	1140			
White Sand			1140	1300			
Black Slate			1300	1335			
Slate & Shells			1335	1340			
Coal			1340	1344			
Slate & Shells			1344	1360			
Black Sand			1360	1390			
Lime			1390	1420			
Sand			1420	1510			
Grampus			1510	1575			
Slate & Shells			1575	1640			
SALT SAND			1640	1940	Water	1760'	
Slate & Lime Shells			1940	2000			



JAN 16 1952
(Over)

Formation	Color	Hard or Soft	Top	Bottom	Oil, Gas or Water	Depth Found	Remarks
White Lime Stone			2000	2085			
Red Rock			2085	2120			
Slate & Shells			2120	2295			
Blue Lime			2295	2330			
Red Rock			2330	2350			
Slate & Shells			2350	2400			
Lime Stone			2400	2420			
Slate & Shells			2420	2505			
Little Lime			2505	2540			
Slate & Shells			2540	2576			
BIG LIME			2576	2790			
Red Rock			2790	2800			
INJUN SAND			2800	2850			
Slate & Shells			2850	3215			
Brown Shale			3215	3227			
BEHEA SAND			3227	3261			
Black Lime			3261	3266			
TOTAL DEPTH				3266			

Date May 10, 19 51

APPROVED THE PURE OIL COMPANY, Owner

By [Signature]
Division Superintendent