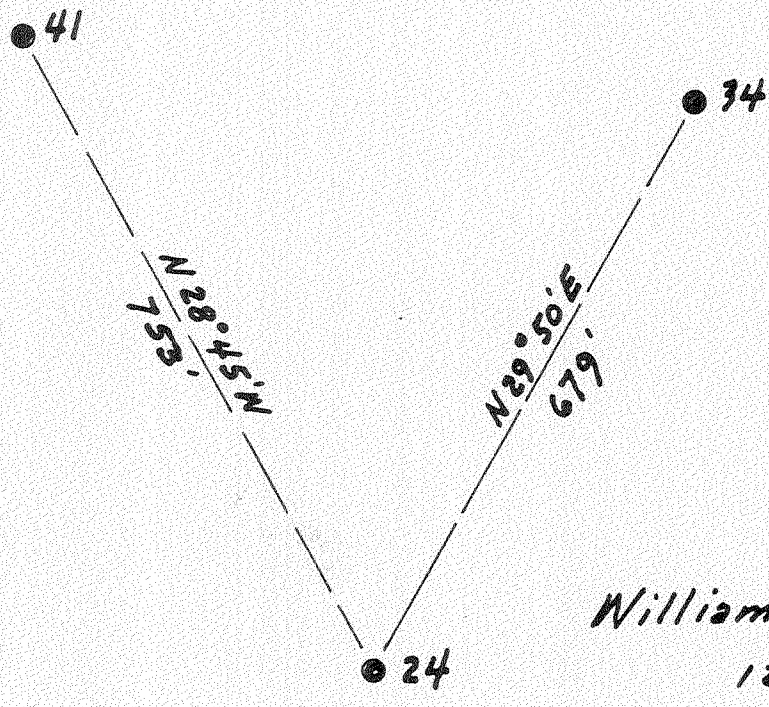


Latitude 38° 10'

Longitude 81° 25'



Williams Coal Co.
12000 ac

3.93 W
3.72

New Location
Drill Deeper
Abandonment

Company The Pure Oil Co.
 Address Newark, Ohio
 Farm Williams Coal Co.
 Tract _____ Acres 12000 Lease No. 5012
 Well (Farm) No. 24 Serial No. 342
 Elevation (Spirit Level) 1608
 Quadrangle Montgomery
 County Kanawha District Cabin Creek
 Engineer J. B. Hunter
 Engineer's Registration No. Ohio-2912
 File No. _____ Drawing No. _____
 Date 5-1-51 Scale 1" = 200'

STATE OF WEST VIRGINIA
DEPARTMENT OF MINES
OIL AND GAS DIVISION
CHARLESTON

WELL LOCATION MAP
FILE NO. KAN-841-A

+ Denotes location of well on United States Topographic Maps, scale 1 to 62,500, latitude and longitude lines being represented by border lines as shown.

- Denotes one inch spaces on border line of original tracing.

8-0240

IMPERIAL TRACING CLOTH
K & E CO., N. Y.

WILLIAMS COAL CO., 24 - THE PURE OIL CO., - KAN 841-A

Cabin Creek District, Kanawha County, W. Va.
 By The Pure Oil Co., Box 551, Newark, Ohio.
 Abandoned under permit Kan-.....-A?
 On 12,000 acres.
 Elevation, 1608' L.
 Surface and minerals owned by Shonk Land Co., 802 Kanawha Banking & Trust
 Bldg., Charleston, W. Va.
 Drilling commenced Feb. 14, 1916; completed May 5, 1916.
 Shot May 5, 1916, at 3263-3281', with 90 qts. glycerine.
 Oil, 124 bbls., 1st 24 hrs.
 Fresh water, 120 and 950'.
 Salt water, 1800'.
 10 $\frac{3}{4}$ " casing, 1065'; 8 $\frac{1}{4}$ " , 1975' (pulled); 6 $\frac{5}{8}$ " , 2608'; 3" tubing, 3249'.
 3" tubing cemented with 29 sacks cement.
 Coal was encountered at 100-102, 950-954, and 1060-1063'.
 Note: Casing-head was lowered 3' in 1945 and 2' in 1949. All measure-
 ments should be made from a point 5' above casing-head.
 Now water injection well. Record to Dept. of Mines dated May 10, 1951.
 Record to RCT from Mrs. Griffith Nov. 28, 1951. Old File No. 1610.

	Top.	Bottom.
Clay, yellow	0	8
Sand, white	8	100
Coal, black	100	102
Slate, black	102	115
Sand, white (water, 120', 3 bailers per hour)	115	300
Slate, black	300	310
Sand, white	310	410
Slate, black	410	500
Slate, black	500	675
Sand, white	675	775
Lime, black	775	920
Sand, white (water, 950', 4 bailers)	920	950
Coal, black	950	954
Lime, gray	954	1000
Slate, black	1000	1020
Sand, white	1020	1060
Coal, black	1060	1063
Lime, gray	1063	1080
Slate, black	1080	1130
Sand, gray	1130	1170
Slate, black	1170	1240
Sand, white	1240	1300
Slate and shells, white	1300	1390
Sand, gray	1390	1480
Slate, black	1480	1515
Grampus Sand	1515	1590
Slate, black	1590	1665
Salt Sand, white (water, 1800', hole full)	1665	1970
Slate, black	1970	1980
Lime, black	1980	2080
Slate, white	2080	2110
Red rock	2110	2300
Slate, black	2300	2475
Maxton Sand, gray	2475	2500

(OVER)

WILLIAMS COAL CO. NO. 24 WELL (Continued).

	Top.	Bottom.
Slate, black	2500	2520
Lime, black	2520	2570
Shells, black	2570	2600
Slate, black	2600	2605
Big Lime, white	2605	2825
Big Injun Sand, red	2825	2870
Shells, blue	2870	3100
Slate, black	3100	3175
Lime, gray	3175	3225
Shale, brown	3225	3246
Berea Sand, white	3246	3282
Lime	3282	3286
Total depth		3286

2520 - 2570	Shells, black
2570 - 2600	Shells, black
2600 - 2605	Slate, black
2605 - 2825	Big Lime, white
2825 - 2870	Big Injun Sand, red
2870 - 3100	Shells, blue
3100 - 3175	Slate, black
3175 - 3225	Lime, gray
3225 - 3246	Shale, brown
3246 - 3282	Berea Sand, white
3282 - 3286	Lime
3286 - 3290	Sandstone, gray
3290 - 3295	Sandstone, gray
3295 - 3300	Sandstone, gray
3300 - 3305	Sandstone, gray
3305 - 3310	Sandstone, gray
3310 - 3315	Sandstone, gray
3315 - 3320	Sandstone, gray
3320 - 3325	Sandstone, gray
3325 - 3330	Sandstone, gray
3330 - 3335	Sandstone, gray
3335 - 3340	Sandstone, gray
3340 - 3345	Sandstone, gray
3345 - 3350	Sandstone, gray
3350 - 3355	Sandstone, gray
3355 - 3360	Sandstone, gray
3360 - 3365	Sandstone, gray
3365 - 3370	Sandstone, gray
3370 - 3375	Sandstone, gray
3375 - 3380	Sandstone, gray
3380 - 3385	Sandstone, gray
3385 - 3390	Sandstone, gray
3390 - 3395	Sandstone, gray
3395 - 3400	Sandstone, gray
3400 - 3405	Sandstone, gray
3405 - 3410	Sandstone, gray
3410 - 3415	Sandstone, gray
3415 - 3420	Sandstone, gray
3420 - 3425	Sandstone, gray
3425 - 3430	Sandstone, gray
3430 - 3435	Sandstone, gray
3435 - 3440	Sandstone, gray
3440 - 3445	Sandstone, gray
3445 - 3450	Sandstone, gray
3450 - 3455	Sandstone, gray
3455 - 3460	Sandstone, gray
3460 - 3465	Sandstone, gray
3465 - 3470	Sandstone, gray
3470 - 3475	Sandstone, gray
3475 - 3480	Sandstone, gray
3480 - 3485	Sandstone, gray
3485 - 3490	Sandstone, gray
3490 - 3495	Sandstone, gray
3495 - 3500	Sandstone, gray
3500 - 3505	Sandstone, gray
3505 - 3510	Sandstone, gray
3510 - 3515	Sandstone, gray
3515 - 3520	Sandstone, gray
3520 - 3525	Sandstone, gray
3525 - 3530	Sandstone, gray
3530 - 3535	Sandstone, gray
3535 - 3540	Sandstone, gray
3540 - 3545	Sandstone, gray
3545 - 3550	Sandstone, gray
3550 - 3555	Sandstone, gray
3555 - 3560	Sandstone, gray
3560 - 3565	Sandstone, gray
3565 - 3570	Sandstone, gray
3570 - 3575	Sandstone, gray
3575 - 3580	Sandstone, gray
3580 - 3585	Sandstone, gray
3585 - 3590	Sandstone, gray
3590 - 3595	Sandstone, gray
3595 - 3600	Sandstone, gray
3600 - 3605	Sandstone, gray
3605 - 3610	Sandstone, gray
3610 - 3615	Sandstone, gray
3615 - 3620	Sandstone, gray
3620 - 3625	Sandstone, gray
3625 - 3630	Sandstone, gray
3630 - 3635	Sandstone, gray
3635 - 3640	Sandstone, gray
3640 - 3645	Sandstone, gray
3645 - 3650	Sandstone, gray
3650 - 3655	Sandstone, gray
3655 - 3660	Sandstone, gray
3660 - 3665	Sandstone, gray
3665 - 3670	Sandstone, gray
3670 - 3675	Sandstone, gray
3675 - 3680	Sandstone, gray
3680 - 3685	Sandstone, gray
3685 - 3690	Sandstone, gray
3690 - 3695	Sandstone, gray
3695 - 3700	Sandstone, gray
3700 - 3705	Sandstone, gray
3705 - 3710	Sandstone, gray
3710 - 3715	Sandstone, gray
3715 - 3720	Sandstone, gray
3720 - 3725	Sandstone, gray
3725 - 3730	Sandstone, gray
3730 - 3735	Sandstone, gray
3735 - 3740	Sandstone, gray
3740 - 3745	Sandstone, gray
3745 - 3750	Sandstone, gray
3750 - 3755	Sandstone, gray
3755 - 3760	Sandstone, gray
3760 - 3765	Sandstone, gray
3765 - 3770	Sandstone, gray
3770 - 3775	Sandstone, gray
3775 - 3780	Sandstone, gray
3780 - 3785	Sandstone, gray
3785 - 3790	Sandstone, gray
3790 - 3795	Sandstone, gray
3795 - 3800	Sandstone, gray
3800 - 3805	Sandstone, gray
3805 - 3810	Sandstone, gray
3810 - 3815	Sandstone, gray
3815 - 3820	Sandstone, gray
3820 - 3825	Sandstone, gray
3825 - 3830	Sandstone, gray
3830 - 3835	Sandstone, gray
3835 - 3840	Sandstone, gray
3840 - 3845	Sandstone, gray
3845 - 3850	Sandstone, gray
3850 - 3855	Sandstone, gray
3855 - 3860	Sandstone, gray
3860 - 3865	Sandstone, gray
3865 - 3870	Sandstone, gray
3870 - 3875	Sandstone, gray
3875 - 3880	Sandstone, gray
3880 - 3885	Sandstone, gray
3885 - 3890	Sandstone, gray
3890 - 3895	Sandstone, gray
3895 - 3900	Sandstone, gray
3900 - 3905	Sandstone, gray
3905 - 3910	Sandstone, gray
3910 - 3915	Sandstone, gray
3915 - 3920	Sandstone, gray
3920 - 3925	Sandstone, gray
3925 - 3930	Sandstone, gray
3930 - 3935	Sandstone, gray
3935 - 3940	Sandstone, gray
3940 - 3945	Sandstone, gray
3945 - 3950	Sandstone, gray
3950 - 3955	Sandstone, gray
3955 - 3960	Sandstone, gray
3960 - 3965	Sandstone, gray
3965 - 3970	Sandstone, gray
3970 - 3975	Sandstone, gray
3975 - 3980	Sandstone, gray
3980 - 3985	Sandstone, gray
3985 - 3990	Sandstone, gray
3990 - 3995	Sandstone, gray
3995 - 4000	Sandstone, gray



STATE OF WEST VIRGINIA
DEPARTMENT OF MINES
OIL AND GAS DIVISION

1610

WELL RECORD

Permit No. KAN-841-A

Oil or Gas Well Water Injection
(KIND)

Company The Pure Oil Company
 Address P.O. Box 551, Newark, Ohio
 Farm Williams Coal Company Acres 12,000
 Location (waters) _____
 Well No. 24 Elev. 1608'
 District Cabin Creek County Kanawha
 The surface of tract is owned in fee by Shonk Land Company
802 Kanawha Banking & Trust Bldg.
Charleston, West Virginia
 Mineral rights are owned by Same as above
 Address _____
 Drilling commenced February 14, 1916
 Drilling completed May 5, 1916
 Date Shot 5/5/16 From 3263' To 3281'
 With 90 Qts. Glycerine
 Open Flow /10ths Water in _____ Inch
 /10ths Merc. in _____ Inch
 Volume _____ Cu. Ft.
 Rock Pressure _____ lbs. _____ hrs.
 Oil 124 bbls., 1st 24 hrs.
 Fresh water 120 feet 950 feet
 Salt water 1800 feet _____ feet

Casing and Tubing	Used in Drilling	Left in Well	Packers
Size			Kind of Packer
16			
13			
10 - 3/4"	1065'	1065'	Size of
8 1/4	1975'	None	
6 3/8	2608'	2608'	Depth set
5 3/16			
3		3249'	Perf. top
2			Perf. bottom
Liners Used			Perf. top
			Perf. bottom

5" tbg cemented with 29 sacks cement
CASING CEMENTED _____ SIZE _____ No. Ft. _____ Date _____

COAL WAS ENCOUNTERED AT 100 FEET 24 INCHES
950 FEET 48 INCHES 1060 FEET 36 INCHES
_____ FEET _____ INCHES _____ FEET _____ INCHES

Formation	Color	Hard or Soft	Top	Bottom	Oil, Gas or Water	Depth Found	Remarks
Note: Casing head was lowered 3' in 1945 and 2' in 1949. All measurements should be made from a point 5' above casinghead.							
Clay	yellow		0	8			
Sand	white		8	100			
Coal	black		100	102			
Slate	black		102	115			
Sand	white		115	300	Water	120	3 bailers per hr.
Slate	black		300	310			
Sand	white		310	410			
Slate	black		410	500			
Slate	black		500	675			
Sand	white		675	775			
Lime	black		775	920			
Sand	white		920	950	water	950	4 bailers
Coal	black		950	954			
Lime	gray		954	1000			
Slate	black		1000	1020			
Sand	white		1020	1060			
Coal	black		1060	1063			
Lime	gray		1063	1080			
Slate	black		1080	1130			
Sand	gray		1130	1170			
Slate	black		1170	1240			
Sand	white		1240	1300			
Slate & Shells	white		1300	1390			
Sand	gray		1390	1480			
Slate	black		1480	1515			
Grampus			1515	1590			
Slate	black		1590	1665			
SALT SAND	white		1665	1970	water	1800	Hole full
Slate	black		1970	1980			
Lime	black		1980	2080			
Slate	white		2080	2110			
Red Rock			2110	2300			
Slate	black		2300	2475			
MAXON SAND	gray		2475	2500			
Slate	black		2500	2520			
Lime	black		2520	2570			
Shells	black		2570	2600			



NOV 23 1951

Formation	Color	Hard or Soft	Top	Bottom	Oil, Gas or Water	Depth Found	Remarks
Slate	black		2600	2605			
BIG LINE	white		2605	2825			
BIG INJUN	red		2825	2870			
Shells	blue		2870	3100			
Slate	black		3100	3175			
Line	gray		3175	3225			
Shale	brown		3225	3246			
BERNEA SAND	white		3246	3282			
Line			3282	3286			
TOTAL DEPTH				3286			

Date May 10, 1951

APPROVED THE PURE OIL COMPANY, Owner

By [Signature]
Division Superintendent