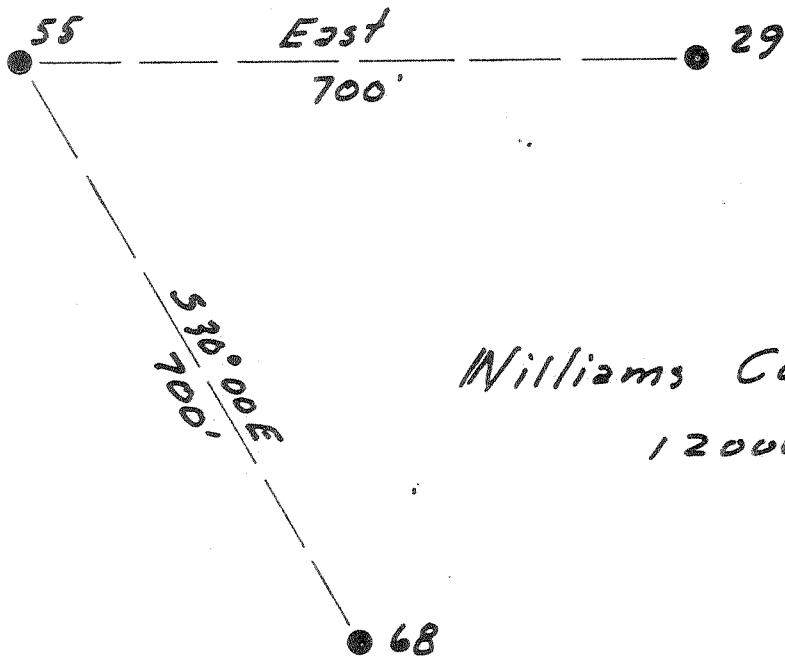


Latitude 38° 10'

Longitude 81° 25'



Williams Coal Co.  
12000 ac

4.5 / W  
8.4 / D

New Location   
 Drill Deeper   
 Abandonment

Company The Pure Oil Co.  
 Address Newark, Ohio  
 Farm Williams Coal Co.  
 Tract \_\_\_\_\_ Acres 12000 Lease No. 5012  
 Well (Farm) No. 55 Serial No. 349  
 Elevation (Spirit Level) 1396  
 Quadrangle Montgomery  
 County Kanawha District Cabin Creek  
 Engineer J. B. Hunter  
 Engineer's Registration No. Ohio-2912  
 File No. \_\_\_\_\_ Drawing No. \_\_\_\_\_  
 Date 5-1-51 Scale 1" = 200'

STATE OF WEST VIRGINIA  
 DEPARTMENT OF MINES  
 OIL AND GAS DIVISION  
 CHARLESTON

WELL LOCATION MAP  
 FILE NO. KAN-848-A

+ Denotes location of well on United States Topographic Maps, scale 1 to 62,500, latitude and longitude lines being represented by border lines as shown.

- Denotes one inch spaces on border line of original tracing.

IMPERIAL TRADING CO. INC.  
 N. Y. & E. CO., N. Y.

WILLIAMS COAL CO., INC. - THE PURE OIL CO. - KAN-848-A



STATE OF WEST VIRGINIA  
DEPARTMENT OF MINES  
OIL AND GAS DIVISION

1671

WELL RECORD

Permit No. KAN-848-A

Oil or Gas Well Water Injection  
(KIND)

Company The Pure Oil Company  
 Address P. O. Box 551, Newark, Ohio  
 Farm Williams Coal Company Acres 12,000  
 Location (waters) \_\_\_\_\_  
 Well No. 55 Elev. \_\_\_\_\_  
 District Cabin Creek County Kanawha  
 The surface of tract is owned in fee by Shonk Land Company  
802 Kanawha Banking & Trust Bldg.  
 Address Charleston, W. Va.  
 Mineral rights are owned by Same as above  
 Address \_\_\_\_\_  
 Drilling commenced September 6, 1916  
 Drilling completed January 23, 1917  
 Date Shot 1/23/17 From 3030 To 3055  
 With 80 Qts. Glycerine  
 Open Flow \_\_\_\_\_ /10ths Water in \_\_\_\_\_ Inch  
 \_\_\_\_\_ /10ths Merc. in \_\_\_\_\_ Inch  
 Volume \_\_\_\_\_ Cu. Ft.  
 Rock Pressure \_\_\_\_\_ lbs. \_\_\_\_\_ hrs.  
 Oil 131 bbls., 1st 24 hrs.  
 Fresh water \_\_\_\_\_ feet \_\_\_\_\_ feet  
 Salt water 2125 feet \_\_\_\_\_ feet

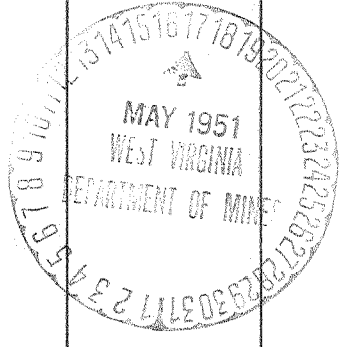
Casing and Tubing	Used in Drilling	Left in Well	Packers
Size			
16			Kind of Packer _____
13			
10-3/4"	890'	890'	Size of _____
8 1/4	1742'	None	
6 5/8	2393'	2393'	Depth set _____
5 3/16			
3		3021	Cemented with 40 Perf. top sacks cement.
2			Perf. bottom _____
Liners Used			Perf. top _____
			Perf. bottom _____

CASING CEMENTED \_\_\_\_\_ SIZE \_\_\_\_\_ No. Ft. \_\_\_\_\_ Date \_\_\_\_\_

COAL WAS ENCOUNTERED AT 145 FEET 24 INCHES  
245 FEET 36 INCHES 285 FEET 36 INCHES  
651 FEET 48 INCHES 705 FEET 36 INCHES  
~~812 - 72"; 842 - 24"; 1115 - 60"; 1267 - 60"~~  
~~1352 - 30"~~

Formation	Color	Hard or Soft	Top	Bottom	Oil, Gas or Water	Depth Found	Remarks
Clay			0	18			
Sand			18	100			
Slate			100	120			
Sand			120	145			
Coal #5			145	147			
Lime			147	160			
Sand			160	245			
Coal			245	248			
Slate			248	265			
Sand			265	285			
Coal			285	288			
Slate			288	330			
Lime			330	340			
Sand			340	450			
Slate			450	465			
Sand			465	595			
Lime			595	640			
Sand			640	651			
Coal			651	655			
Lime			655	705			
Coal			705	708			
Slate			708	730			
Lime			730	740			
Sand			740	812			
Coal #2 Gas			812	818			
Slate			818	842			
Coal Powellton			842	844			
Sand			844	895			
Lime			895	915			
Slate			915	925			
Lime			925	935			
Sand			935	1017			
Lime			1017	1025			
Sand			1025	1073			
Slate			1073	1100			
Lime			1100	1115			
Coal			1115	1120			
Lime			1120	1125			
Slate			1125	1130			

C



(Over)

JUL 9 1952

Formation	Color	Hard or Soft	Top	Bottom	Oil, Gas or Water	Depth Found	Remarks
Sand			1130	1180			
Slate			1180	1185			
Sand			1185	1267			
Coal			1267	1272			
Grampus			1272	1352			
Coal			1352	1355			
Sand			1355	1365			
Slate			1365	1435			
SALT SAND			1435	1705			
Slate			1705	1712			
Lime			1712	1740			
Slate & shells			1740	1860			
Red Rock			1860	1915			
Slate			1915	1974			
Lime			1974	2060			
Maxon Sand			2060	2212	water	2125'	Hole full
Lime			2212	2240			
Slate			2240	2270			
Little Lime			2270	2336			
Slate			2336	2350			
Lime			2350	2357			
Pencil cave			2357	2361			
BIG LIME			2361	2576			
Slate			2576	2582			
INJUN SAND			2582	2615			
Slate & shells			2615	3013 $\frac{1}{2}$			
BEREA SAND			3013 $\frac{1}{2}$	3055			
TOTAL DEPTH				3058			

Date May 11, 1951

APPROVED THE PURE OIL COMPANY, Owner

By *Ray Anderson*  
(Title)  
Division Superintendent