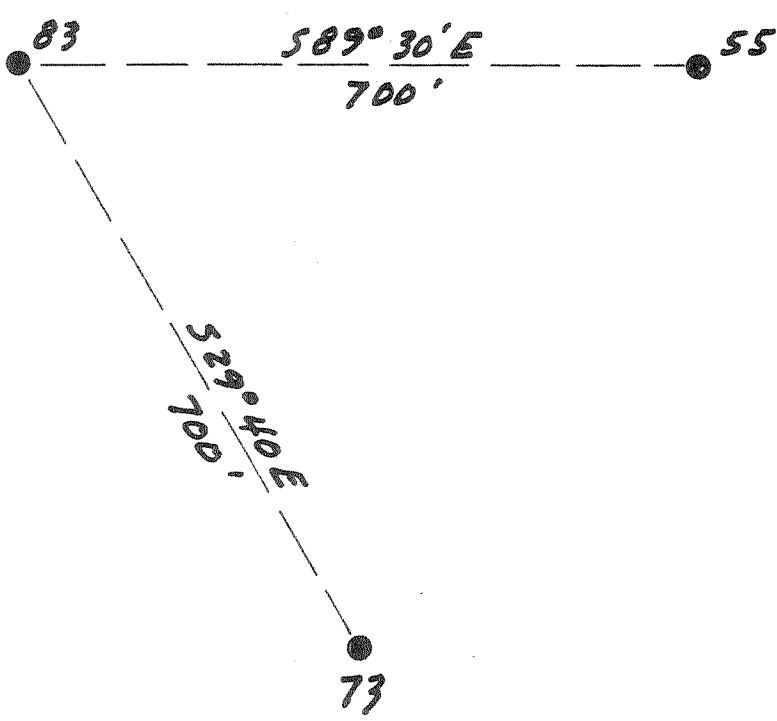


Latitude 38° 10'

Longitude 81° 30'

Williams Coal Co.
12000 ac



New Location
 Drill Deeper
 Abandonment

0.02 W
 3.42 L

Company The Pure Oil Co.
 Address Newark, Ohio Box 551
 Farm Williams Coal Co.
 Tract _____ Acres 12000 Lease No. 5012
 Well (Farm) No. 83 Serial No. 354
 Elevation (Spirit Level) 1540
 Quadrangle Peytonia
 County Kanawha District Cabin Creek
 Engineer J. B. Hunter
 Engineer's Registration No. Ohio-2912
 File No. _____ Drawing No. _____
 Date 5-1-51 Scale 1" = 200'

STATE OF WEST VIRGINIA
 DEPARTMENT OF MINES
 OIL AND GAS DIVISION
 CHARLESTON

WELL LOCATION MAP
 FILE NO. KAN-853-A

+ Denotes location of well on United States Topographic Maps, scale 1 to 62,500, latitude and longitude lines being represented by border lines as shown.

- Denotes one inch spaces on border line of original tracing.

6-6-296

WILLIAMS COAL CO. No. 83 - THE PURE OIL CO. - KAN-853-A



STATE OF WEST VIRGINIA
DEPARTMENT OF MINES
OIL AND GAS DIVISION

1673

WELL RECORD

Permit No. KAN-853-A

Oil or Gas Well Oil
(KIND)

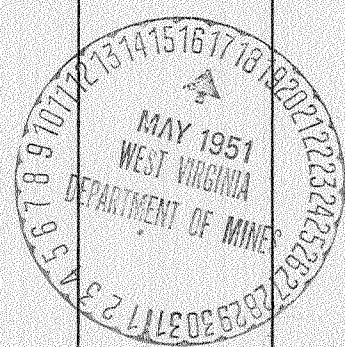
Company The Pure Oil Company
Address P. O. Box 551, Newark, Ohio
Farm Williams Coal Company Acres 12,000
Location (waters) _____
Well No. 83 Elev. 1540'
District Cabin Creek County Kanawha
The surface of tract is owned in fee by Shonk Land Company
502 Kanawha Banking & Trust Bldg.
Address Charleston, W. Va.
Mineral rights are owned by Same as above
Address _____
Drilling commenced April 13, 1918
Drilling completed July 3, 1918
Date Shot 6/4/24 From 3190' To 3200'
With 1st 40 qts glycerine; 2nd 80 qts. glycerine

Casing and Tubing	Used in Drilling	Left in Well	Packers
Size			Kind of Packer
16			
13			
10 <u>-3/4"</u>	<u>1007'</u>	<u>1007'</u>	Size of
8 1/4	<u>1865'</u>	<u>None</u>	
6 5/8	<u>2523'</u>	<u>2523'</u>	Depth set
5 3/16			
3			Perf. top
2			Perf. bottom
Liners Used			Perf. top
			Perf. bottom

Open Flow /10ths Water in _____ Inch
/10ths Merc. in _____ Inch
Volume _____ Cu. Ft.
Rock Pressure _____ lbs. _____ hrs.
Oil 29 bbls., 1st 24 hrs.
Fresh water 55' feet _____ feet
Salt water 1705' 2260' feet _____ feet

CASING CEMENTED	SIZE	No. Ft.	Date
COAL WAS ENCOUNTERED AT <u>55</u> FEET <u>60</u> INCHES			
<u>880</u>	<u>60</u>	<u>968</u>	<u>48</u>
<u>990</u>	<u>60</u>		

Formation	Color	Hard or Soft	Top	Bottom	Oil, Gas or Water	Depth Found	Remarks
Conductor			0	16			
Sand	white		16	55			
Coal			55	60	water	55'	6 bailers per hr
Sand	white		60	420			
Slate	black		420	545			
Sand	white		545	725			
Slate	black		725	775			
Sand	white		775	807			
Slate	black		807	840			
Lime	black		840	860			
Slate	black		860	880			
Coal	880		880	885			
Lime	white		885	895			
Sand	white		895	945			
Lime	black		945	968			
Coal	968		968	972			
Slate	black		972	990			
Coal	black		990	995			
Lime	black		995	1000			
Sand	white		1000	1050			
Slate	black		1050	1085			
Sand	white		1085	1105			
Slate	black		1105	1130			
Sand	white		1130	1240			
Slate	black		1240	1420			
Big Dunkard			1420	1535			
Slate	black		1535	1590			
SALT SAND	white		1590	1845	Water	1705'	Filled 1100'
Slate & shells	black		1845	1875	Gas	1615'	show
Red Rock			1875	1885			
Slate & Lime	white		1885	2030			
Red Rock			2030	2075			
Lime	black		2075	2190			
MAXON SAND	white		2190	2410	Water	2260'	filled 1550'
Slate	black		2410	2490	Gas	2225'	show
Lime	black		2490	2505			
BIG LIME	white		2505	2720	Gas	2685'	show
BIG INJUN	red		2720	2755			



Formation	Color	Hard or Soft	Top	Bottom	Oil, Gas or Water	Depth Found	Remarks
Slate & shells	black		2755	3005			
Broken slate			3005	3015			
Slate & Lime	Black		3015	3140			
Shale	black		3140	3160			
BERRIA SAND			3160	3199	Gas Oil	3174'-3185' 3188'-3199'	
TOTAL DEPTH			3200				

Note: In 1926, tubing was pulled, hole bridged at 3170' and filled with cement from 3160' to 2710', sealing formation.

Date May 15, 19 51

APPROVED THE PURE OIL COMPANY, Owner

By [Signature] (Title)

Division Superintendent