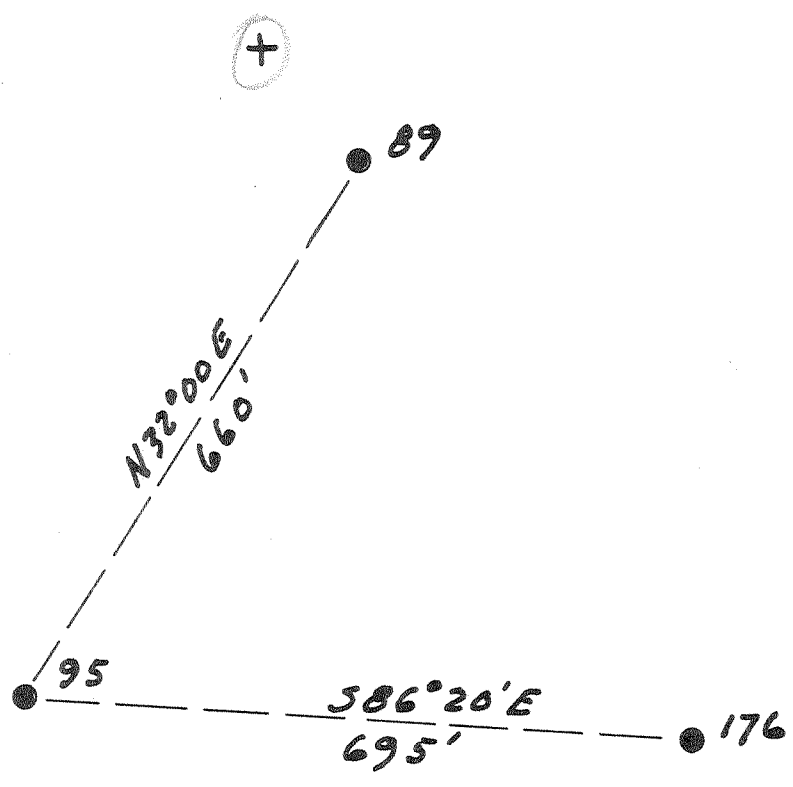


Latitude 74° 10'

Longitude 81° 25'



Williams Coal Co.
12000 ac

3.77 W
3.37 E

New Location
Drill Deeper
Abandonment

Company The Pure Oil Co.
 Address Newark, Ohio Box 551
 Farm Williams Coal Co.
 Tract _____ Acres 12000 Lease No. 5012
 Well (Farm) No. 95 Serial No. 357
 Elevation (Spirit Level) 1240
 Quadrangle Montgomery
 County Kanawha District Cabin Creek
 Engineer J. B. Hunter
 Engineer's Registration No. Ohio-2912
 File No. _____ Drawing No. _____
 Date 5-1-51 Scale 1" = 200'

STATE OF WEST VIRGINIA
DEPARTMENT OF MINES
OIL AND GAS DIVISION
CHARLESTON

WELL LOCATION MAP
FILE NO. KAN-856-A

+ Denotes location of well on United States Topographic Maps, scale 1 to 62,500, latitude and longitude lines being represented by border lines as shown.
- Denotes one inch spaces on border line of original tracing.

"IMPERIAL" TRACING CLOTH
K & E CO., N. Y.

WILLIAMS COAL Co., no. 95 - THE PURE OIL Co., - KAN-856-A



STATE OF WEST VIRGINIA
DEPARTMENT OF MINES
OIL AND GAS DIVISION

1746

WELL RECORD

Permit No. KAU-856-A

Oil or Gas Well Oil
(KIND)

Company The Pure Oil Company
 Address P. O. Box 551, Newark, Ohio
 Farm Williams Coal Company Acres 12,000
 Location (waters) _____
 Well No. 95 Elev. 1240'
 District Cabin Creek County Kanawha
 The surface of tract is owned in fee by Shonk Land Company
802 Kanawha Banking & Trust Bldg.
 Address Charleston, W. Va.
 Mineral rights are owned by Same as above
 Address _____
 Drilling commenced May 1, 1917
 Drilling completed July 18, 1917
 Date Shot 7/19/17 From 2936 To 2945
 With 40 Qts. Glycerine
 Open Flow /10ths Water in _____ Inch
 /10ths Merc. in _____ Inch
 Volume _____ Cu. Ft.
 Rock Pressure _____ lbs. _____ hrs.
 Oil 50 bbls., 1st 24 hrs.
 Fresh water _____ feet _____ feet
 Salt water _____ feet _____ feet

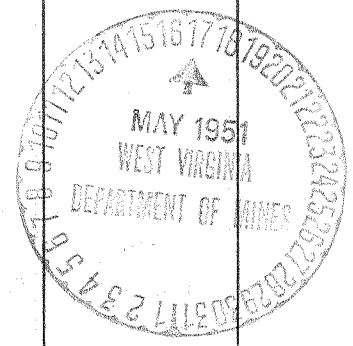
| Casing and Tubing | Used in Drilling | Left in Well | Packers |
|-------------------|------------------|--------------|----------------|
| Size | | | |
| 16 | | | Kind of Packer |
| 13 | | | |
| 10 - 3/4" | 586' | 586' | Size of |
| 8 1/4" | 1596' | None | |
| 6 1/2" | 2260' | 2260' | Depth set |
| * 5 3/16" Liner | 507' | 131' | |
| 3 | | | Perf. top |
| 2 | | 2934' | Perf. bottom |
| Liners Used | | | Perf. top |
| | | | Perf. bottom |

*Pulled all but 131' in 1945-top of liner in hole approx. 2821'

CASING CEMENTED _____ SIZE _____ No. Ft. _____ Date _____

COAL WAS ENCOUNTERED AT 78 FEET 24 INCHES
220 FEET 24 INCHES 565 FEET 48 INCHES
 FEET INCHES FEET INCHES

| Formation | Color | Hard or Soft | Top | Bottom | Oil, Gas or Water | Depth Found | Remarks |
|-------------|-------|--------------|------|--------|-------------------|-------------|---------|
| Sand | | | 0 | 40 | | | |
| Slate | | | 40 | 78 | | | |
| Coal | | | 78 | 80 | | | |
| Sand | | | 80 | 130 | | | |
| Slate | | | 130 | 210 | | | |
| Sand | | | 210 | 220 | | | |
| Coal | | | 220 | 222 | | | |
| Sand | | | 222 | 300 | | | |
| Lime | | | 300 | 348 | | | |
| Sand | | | 348 | 370 | | | |
| Lime | | | 370 | 400 | | | |
| Sand | | | 400 | 448 | | | |
| Slate | | | 448 | 480 | | | |
| Lime | | | 480 | 526 | | | |
| Sand | | | 526 | 565 | | | |
| Coal | | | 565 | 569 | | | |
| Slate | | | 569 | 600 | | | |
| Sand | | | 600 | 650 | | | |
| Sand | | | 650 | 685 | | | |
| Sand | | | 685 | 755 | | | |
| Slate | | | 755 | 784 | | | |
| Lime | | | 784 | 832 | | | |
| Sand | | | 832 | 885 | | | |
| Slate | | | 885 | 930 | | | |
| Sand | | | 930 | 966 | | | |
| Slate | | | 966 | 1000 | | | |
| Sand | | | 1000 | 1230 | | | |
| Slate | | | 1230 | 1285 | | | |
| SALT SAND | | | 1285 | 1595 | | | |
| Slate | | | 1595 | 1622 | | | |
| Lime | | | 1622 | 1750 | | | |
| Red Rock | | | 1750 | 1830 | | | |
| Sand | | | 1830 | 1852 | | | |
| Lime | | | 1852 | 1950 | | | |
| Red Rock | | | 1950 | 2090 | | | |
| MAXON SAND | | | 2090 | 2103 | | | |
| Slate | | | 2103 | 2135 | | | |
| Little Lime | | | 2135 | 2233 | | | |
| Pencil cave | | | 2233 | 2258 | | | |



| Formation | Color | Hard or Soft | Top | Bottom | Oil, Gas or Water | Depth Found | Remarks |
|----------------|-------|--------------|------|--------|-------------------|-------------|----------|
| BIG LIME | | | 2258 | 2468 | | | |
| BIG INJUN | | | 2468 | 2508 | | | |
| Slate & Shells | | | 2508 | 2917 | | | |
| BEREA SAND | | | 2917 | 2947 | Oil | 2936' | to 2946' |
| Line | | | 2947 | 2949 | | | |
| TOTAL DEPTH | | | | 2949 | | | |

Date May 14, 1951

APPROVED THE PURE OIL COMPANY, Owner

By [Signature]

(Title)

Division Superintendent