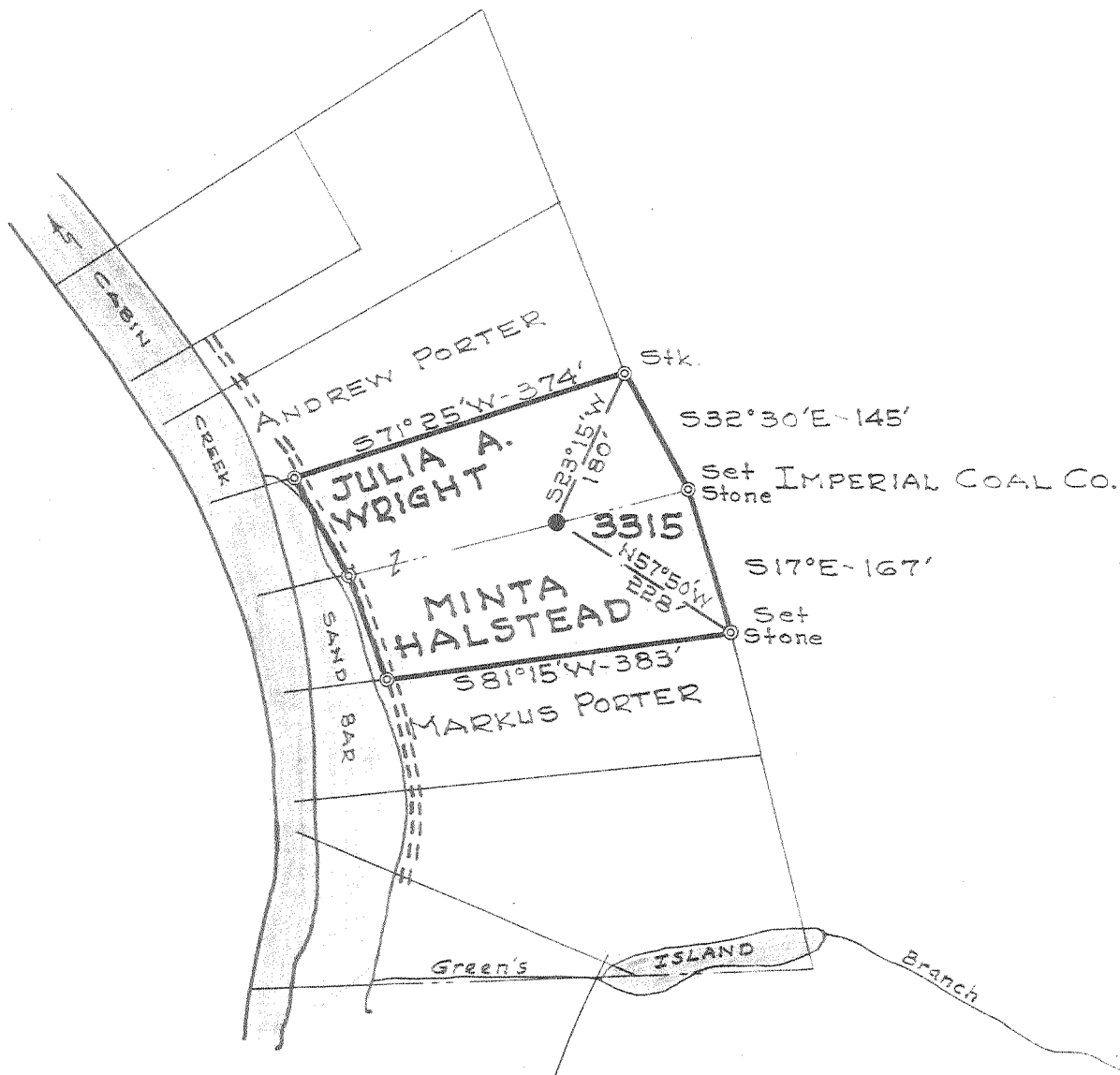


Latitude 33° 10'

Longitude 81° 25'



New Location
 Drill Deeper
 Abandonment

1951

FEB 1 1953

1.7 W
1.9

Company THE PRESTON OIL CO.
 Address CHARLESTON, W. VA.
 Farm WRIGHT / HALSTEAD
 Tract _____ Acres 2 Lease No. 27185
 Well (Farm) No. 1 Serial No. 3315
 Elevation (Spirit Level) 706
 Quadrangle MONTGOMERY
 County KANAWHA District CABIN CREEK
 Engineer _____
 Engineer's Registration No. 662
 File No. 70-43 Drawing No. _____
 Date JULY 28, 1951 Scale 1"=200'

STATE OF WEST VIRGINIA
 DEPARTMENT OF MINES
 OIL AND GAS DIVISION
 CHARLESTON

WELL LOCATION MAP
 FILE NO. KAN-871-A

+ Denotes location of well on United States Topographic Maps, scale 1 to 62,500, latitude and longitude lines being represented by border lines as shown.

- Denotes one inch spaces on border line of original tracing.

6-6-240

WRIGHT & HALSTEAD JA, 1 (3315) - PRESTON OIL Co, - KAN-871-A

WRIGHT & HOLSTEAD NO. 1 (803) WELL.

Cabin Creek District, Kanawha County, W. Va.
 By The Ohio Fuel Oil Co. (Virginian Gasoline & Oil Co.)
 O₂ lease No. 1930-1933-2015; $3\frac{1}{2}$ acres.
 Drilling contractor, G. L. Titus, Huntington, W. Va.
 Cost per foot, \$1.60.
 Commenced Oct. 19, 1916; completed Feb. 18, 1917.
 Drillers: Jack McCall, Eli Nemasters.
 $12\frac{1}{2}$ " casing, 42'; 10", 484'; $8\frac{1}{4}$ ", 1121' (pulled); $6\frac{5}{8}$ ", 1802'.
 Shot Feb. 23, 1917; 2 -2 - $5\frac{1}{2}$ " x 6' 4" and 1 $5\frac{1}{2}$ " x 4' 4" shells.
 Oil, flowed 75 bbls., 1st 24 hrs.

| | Top. | Bottom. | Thickness. |
|--|--------|---------|------------|
| Sand and gravel (hole full of water under $12\frac{1}{2}$ " pipe) | 0 - | 42 | 42 |
| Slate | 42 - | 100 | 58 |
| Sand | 100 - | 130 | 30 |
| Slate | 130 - | 185 | 55 |
| Sand | 185 - | 200 | 15 |
| Slate | 200 - | 250 | 50 |
| Sand | 250 - | 310 | 60 |
| Slate (caved at 420') | 310 - | 500 | 190 |
| Sand | 500 - | 512 | 12 |
| Slate | 512 - | 530 | 18 |
| Sandy lime | 530 - | 650 | 120 |
| Graphis Sand (3 bailers of water an hour at 735') | 650 - | 760 | 110 |
| Slate | 760 - | 790 | 30 |
| Salt Sand (hole full of water at 835') | 790 - | 1090 | 300 |
| Slate and shells (caved at 1110') | 1090 - | 1265 | 175 |
| Red rock | 1265 - | 1280 | 15 |
| Lime | 1280 - | 1310 | 30 |
| Red rock | 1310 - | 1340 | 30 |
| Slate | 1340 - | 1365 | 25 |
| Red rock | 1365 - | 1380 | 15 |
| Slate and shells | 1380 - | 1550 | 170 |
| Maxton Sand | 1550 - | 1650 | 100 |
| Lime | 1650 - | 1675 | 25 |
| Slate and shells | 1675 - | 1755 | 80 |
| Big Lime (gas at 1925') | 1755 - | 1950 | 195 |
| Big Injun Sand | 1950 - | 2010 | 60 |
| Lime and shells | 2010 - | 2240 | 230 |
| Slate | 2240 - | 2350 | 110 |
| Lime and shells | 2350 - | 2392 | 42 |
| Shale or Coffee Slate | 2392 - | 2403 | 11 |
| Berea Grit (oil at 2427') | 2403 - | 2435 | 32 |
| Slate | 2435 - | 2439 | 4 |
| Total depth | | 2439 | |

WRIGHT & HALSTEAD NO. 3315 WELL.

871A

Cabin Creek District, Kanawha County, W. Va.
 By The Preston Oil Co., 1110 Washington St., East, Charleston, W. Va.
 Abandoned under permit Kan-.....-A?
 On $3\frac{1}{2}$ acres, on Cabin Creek.
 Elevation, 706' L.
 Minerals owned by Frank Wright et al., General Delivery, Charleston, W. Va.
 Drilling commenced Dec. 8, 1916; completed Feb. 18, 1917.
 Shot Feb. 23, 1917, with 80 qts.
 Oil, 75 bbls., per day, Berea Sand.
 Salt water, 835', hole full.
 12 $\frac{1}{2}$ " casing, 42'; 10", 484'; 8 $\frac{1}{4}$ ", 1121' (pulled); 6 $\frac{5}{8}$ ", 1802'.
 Oil well. Record to Dept. of Mines dated July 30, 1951.
 Record to RCT from Mrs. Griffith July 9, 1952. O. F. No. 1677.

| | Top. | Bottom. |
|-----------------------------------|------|---------|
| Sand and gravel | 0 | 42 |
| Slate | 42 | 100 |
| Sand | 100 | 130 |
| Slate | 130 | 135? |
| Sand | 185? | 200 |
| Slate | 200 | 250 |
| Sand | 250 | 310 |
| Slate (caved at 420') | 310 | 500 |
| Sand | 500 | 512 |
| Slate | 512 | 530 |
| Sandy lime | 530 | 650 |
| Grampus Sand | 650 | 760 |
| Slate | 760 | 790 |
| Salt Sand | 790 | 1090 |
| Slate and shells (caved at 1110') | 1090 | 1265 |
| Red rock | 1265 | 1280 |
| Lime | 1280 | 1310 |
| Red rock | 1310 | 1340 |
| Slate | 1340 | 1365 |
| Red rock | 1365 | 1380 |
| Slate and shells | 1380 | 1550 |
| Maxton Sand | 1550 | 1650 |
| Lime | 1650 | 1675 |
| Slate and shells | 1675 | 1755 |
| Big Lime (gas at 1925') | 1755 | 1950 |
| Big Injun Sand | 1950 | 2010 |
| Lime and shells | 2010 | 2240 |
| Slate | 2240 | 2350 |
| Lime and shells | 2350 | 2392 |
| Shale or Coffee Slate | 2392 | 2403 |
| Berea Grit (oil at 2427') | 2403 | 2435 |
| Slate | 2435 | 2439 |
| Total depth | | 2439 |



STATE OF WEST VIRGINIA
DEPARTMENT OF MINES
OIL AND GAS DIVISION

1677

WELL RECORD

Permit No. KAW-871-A

Abandonment

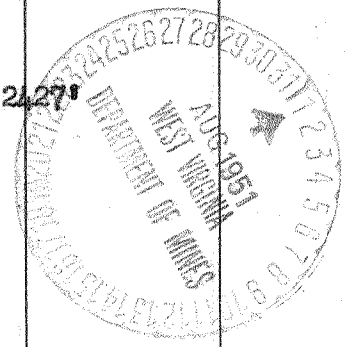
Oil or Gas Well Oil
(KIND)

Company The Preston Oil Company
Address 1110 Washington St. E. Charleston, W. Va.
Farm Wright & Halstead Acres 3-1/2
Location (waters) Cabin Creek
Well No. 3315 Elev. 706L
District Cabin Creek County Kanawha
The surface of tract is owned in fee by _____
Address _____
Mineral rights are owned by Frank Wright et al
General Delivery Address Chas. W. Va.
Drilling commenced Dec. 8, 1916
Drilling completed Feb. 18, 1917
Date Shot 2-23-17 From _____ To _____
With 80 qts.
Open Flow _____ /10ths Water in _____ Inch
_____ /10ths Merc. in _____ Inch
Volume _____ Cu. Ft.
Rock Pressure _____ lbs. _____ hrs.
Oil 75 Bbls. per day, Berea Sand bbls., 1st 24 hrs.
Fresh water _____ feet _____ feet
Salt water 835 feet _____ feet

| Casing and Tubing | Used in Drilling | Left in Well | Packers |
|-------------------|------------------|--------------|----------------|
| Size | | | |
| 46 12 1/2 | 42' | 42' | Kind of Packer |
| 18 | | | |
| 10 | 484' | 484' | Size of |
| 8 1/2 | 1121' | None | |
| 6 1/2 | 1802' | 1802' | Depth set |
| 5 3/16 | | | |
| 3 | | | Perf. top |
| 2 | | | Perf. bottom |
| Liners Used | | | Perf. top |
| | | | Perf. bottom |

CASING CEMENTED _____ SIZE _____ No. Ft. _____ Date _____
COAL WAS ENCOUNTERED AT _____ FEET _____ INCHES
_____ FEET _____ INCHES _____ FEET _____ INCHES
_____ FEET _____ INCHES _____ FEET _____ INCHES

| Formation | Color | Hard or Soft | Top | Bottom | Oil, Gas or Water | Depth Found | Remarks |
|----------------------|-------|--------------|------|--------|----------------------------|-------------|---------|
| Sand & Gravel | | | 0 | 42 | | | |
| Slate | | | 42 | 100 | | | |
| Sand | | | 100 | 130 | | | |
| Slate | | | 130 | 135 | | | |
| Sand | | | 185 | 200 | | | |
| Slate | | | 200 | 250 | | | |
| Sand | | | 250 | 310 | | | |
| Slate | | | 310 | 500 | | | |
| Sand | | | 500 | 512 | | | |
| Slate | | | 512 | 530 | | | |
| Sandy Lime | | | 530 | 650 | | | |
| Gramphis Sand | | | 650 | 760 | | | |
| Slate | | | 760 | 790 | | | |
| Salt Sand | | | 790 | 1090 | | | |
| Slate & Shells | | | 1090 | 1265 | | | |
| Red Rock | | | 1265 | 1280 | | | |
| Lime | | | 1280 | 1310 | | | |
| Red Rock | | | 1310 | 1340 | | | |
| Slate | | | 1340 | 1365 | | | |
| Red Rock | | | 1365 | 1380 | | | |
| Slate & Shells | | | 1380 | 1550 | | | |
| Maxon Sand | | | 1550 | 1650 | | | |
| Lime | | | 1650 | 1675 | | | |
| Slate & Shells | | | 1675 | 1755 | | | |
| Big Lime | | | 1755 | 1950 | | | |
| Big Injtn | | | 1950 | 2010 | | | |
| Lime & Shells | | | 2010 | 2240 | | | |
| Slate | | | 2240 | 2350 | | | |
| Lime & Shells | | | 2350 | 2392 | | | |
| Shale or Coffe Slate | | | 2392 | 2403 | | | |
| Berea Grit | | | 2403 | 2435 | | | |
| Slate Bottom Hole | | | 2435 | 2439 | | | |
| | | | | | Caved at 420' | | |
| | | | | | Hole full of water at 835' | | |
| | | | | | Caved at 1110' | | |
| | | | | | Gas at 1925' | | |
| | | | | | Oil at 2427' | | |



(Over)

JUL 9 1952

