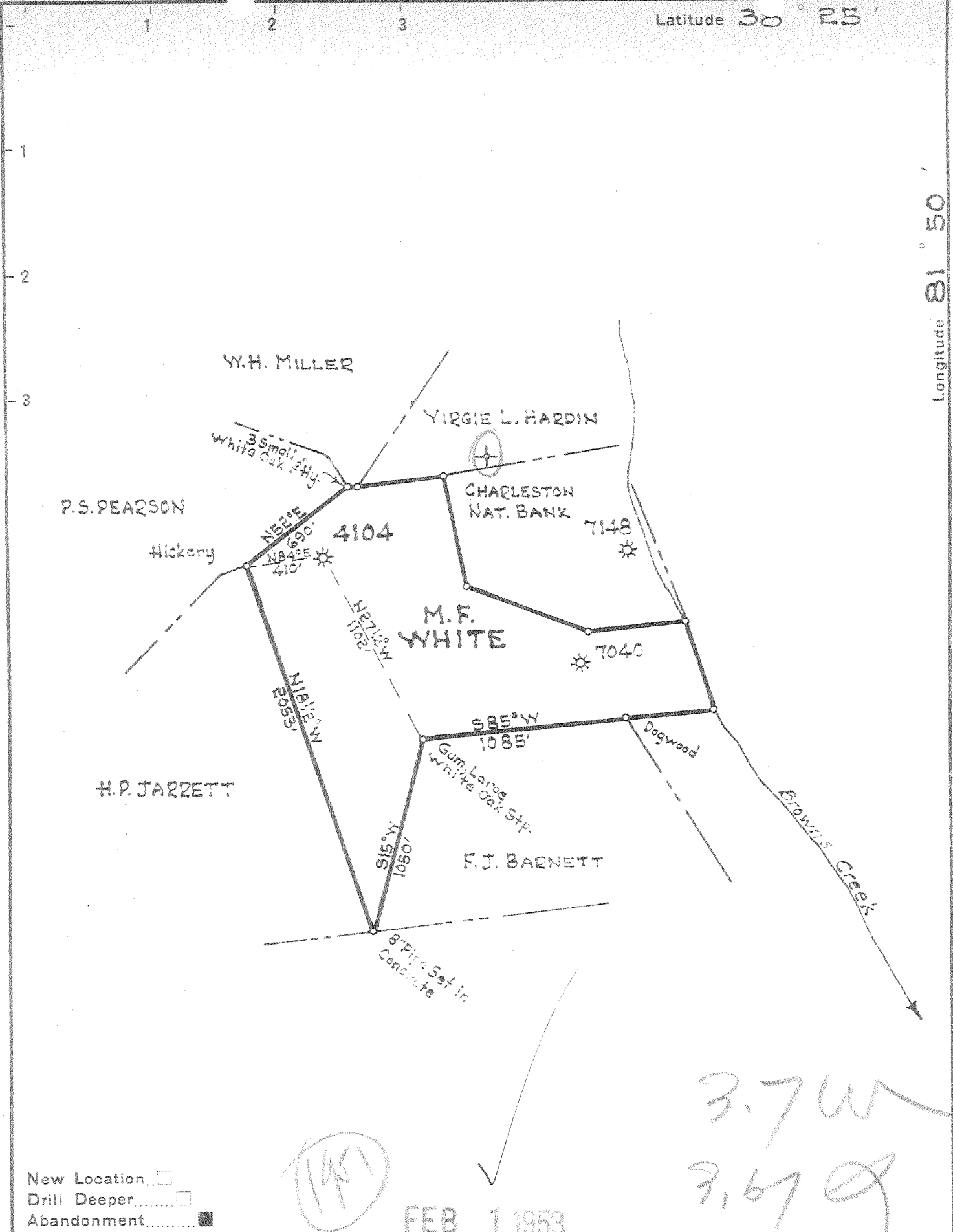


Latitude 30° 25'

Longitude 81° 50'



New Location
 Drill Deeper
 Abandonment

(1951)

FEB 1 1953

3.7 W
 3.67

Company UNITED FUEL GAS CO.
 Address CHARLESTON, W. VA.
 Farm M.F. WHITE
 Tract 72 Acres 30320 Lease No.
 Well (Farm) No. 4104 Serial No.
 Elevation (Spot Level) 774. TOPO
 Quadrangle SAINT ALBANS
 County KANAWHA District JEFFERSON
 Engineer Paul E. Jochims
 Engineer's Registration No. 669
 File No. 46-59 Drawing No.
 Date OCT. 5, 1951 Scale 1"-660'

STATE OF WEST VIRGINIA
 DEPARTMENT OF MINES
 OIL AND GAS DIVISION
 CHARLESTON

WELL LOCATION MAP
 FILE NO. KAN-908-A

+ Denotes location of well on United States Topographic Maps, scale 1 to 62,500, latitude and longitude lines being represented by border lines as shown.
 - Denotes one inch spaces on border line of original tracing.