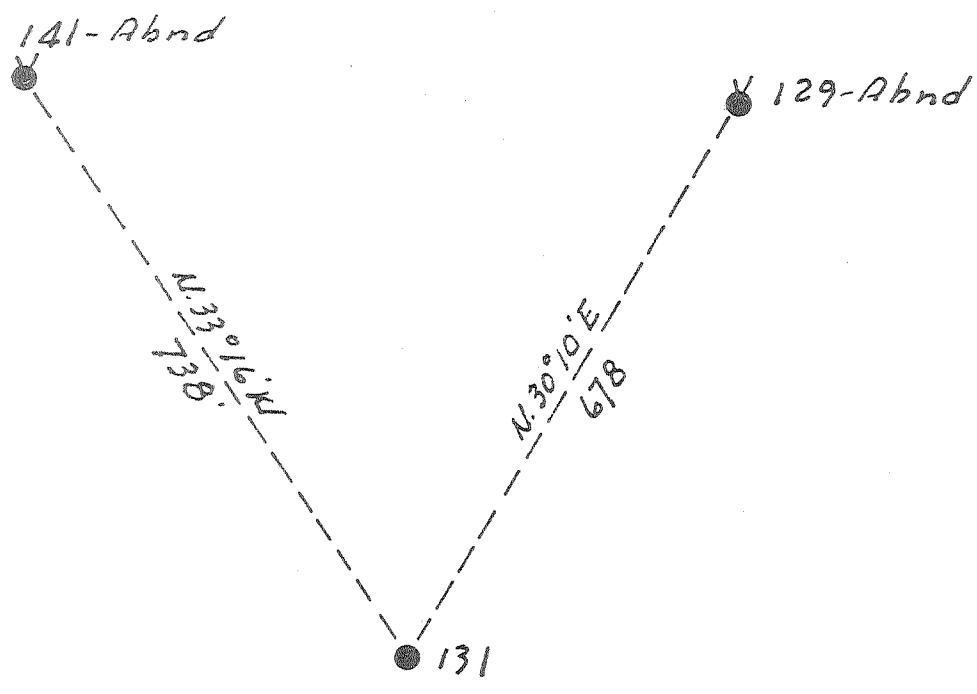


Latitude 38° 10'

Longitude 81° 25'



Williams Coal Co.  
12000<sup>±</sup>

2117 W  
2132

New Location   
Drill Deeper   
Abandonment

MAY 8 1953

Company	The Pure Oil Co.
Address	Newark, Ohio
Farm	Williams Coal Co.
Tract	Acres 12000 Lease No. 5012
Well (Farm) No.	131 Serial No. 417
Elevation (Spirit Level)	1438
Quadrangle	Montgomery
County	Kanawha District Cabin Creek
Engineer	J.B. Hunter
Engineer's Registration No.	Ohio-2912
File No.	Drawing No.
Date	2-23-53 Scale 1" = 200'

STATE OF WEST VIRGINIA  
DEPARTMENT OF MINES  
OIL AND GAS DIVISION  
CHARLESTON

WELL LOCATION MAP  
FILE NO. KAN-995-A

+ Denotes location of well on United States Topographic Maps, scale 1 to 62,500, latitude and longitude lines being represented by border lines as shown.

- Denotes one inch spaces on border line of original tracing.

800 1240



STATE OF WEST VIRGINIA DEPARTMENT OF MINES OIL AND GAS DIVISION

1790

WELL RECORD

Permit No. 995-A Oil or Gas Well Wtr. Inj. (KIND)

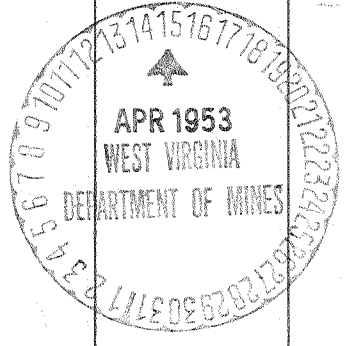
Company The Pure Oil Company
Address Box 551 - Newark, Ohio
Farm Williams Coal Company Acres 12,000
Location (waters) Cabin Creek
Well No. 229131 Elev. 1438
District Cabin Creek County Kanawha
The surface of tract is owned in fee by Shonk Land Company
802 Kan. Bkng & Trust Co. Bldg - Charleston, W. Va.
Mineral rights are owned by Ditto

Table with columns: Casing and Tubing, Used in Drilling, Left in Well, Packers. Includes data for sizes 16, 13, 10, 8 1/4, 6 5/8, 5 3/16, 3, 2 and packer details like 'Gas anchor packer' and 'Depth set 3097'.

Drilling commenced October 1, 1917
Drilling completed February 28, 1918
Date Shot 4-9-18 From 3112 To 3126
With 60 Qts. glycerin
Open Flow /10ths Water in Inch
/10ths Merc. in Inch
Volume Cu. Ft.
Rock Pressure lbs. hrs.
Oil 27 bbls., 1st 24 hrs.
Fresh water feet feet
Salt water 2180 feet feet

CASING CEMENTED SIZE No. Ft. Date
COAL WAS ENCOUNTERED AT 300 FEET 48 INCHES
700 FEET 60 INCHES
FEET INCHES FEET INCHES

Main well log table with columns: Formation, Color, Hard or Soft, Top, Bottom, Oil, Gas or Water, Depth Found, Remarks. Lists geological layers like Sand, Coal, Slate, and Limestone with depths.



NOTE: Casinghead lowered 3' in 1942. All measurements should be made from point 3' above casing-head.
Packer cemented with 10 sacks cement and 10 sacks sand in 1927. In 1942 packer was sealed with 25 sacks of pure cement and 119 sacks of clay which filled space between tubing and casing to surface.

