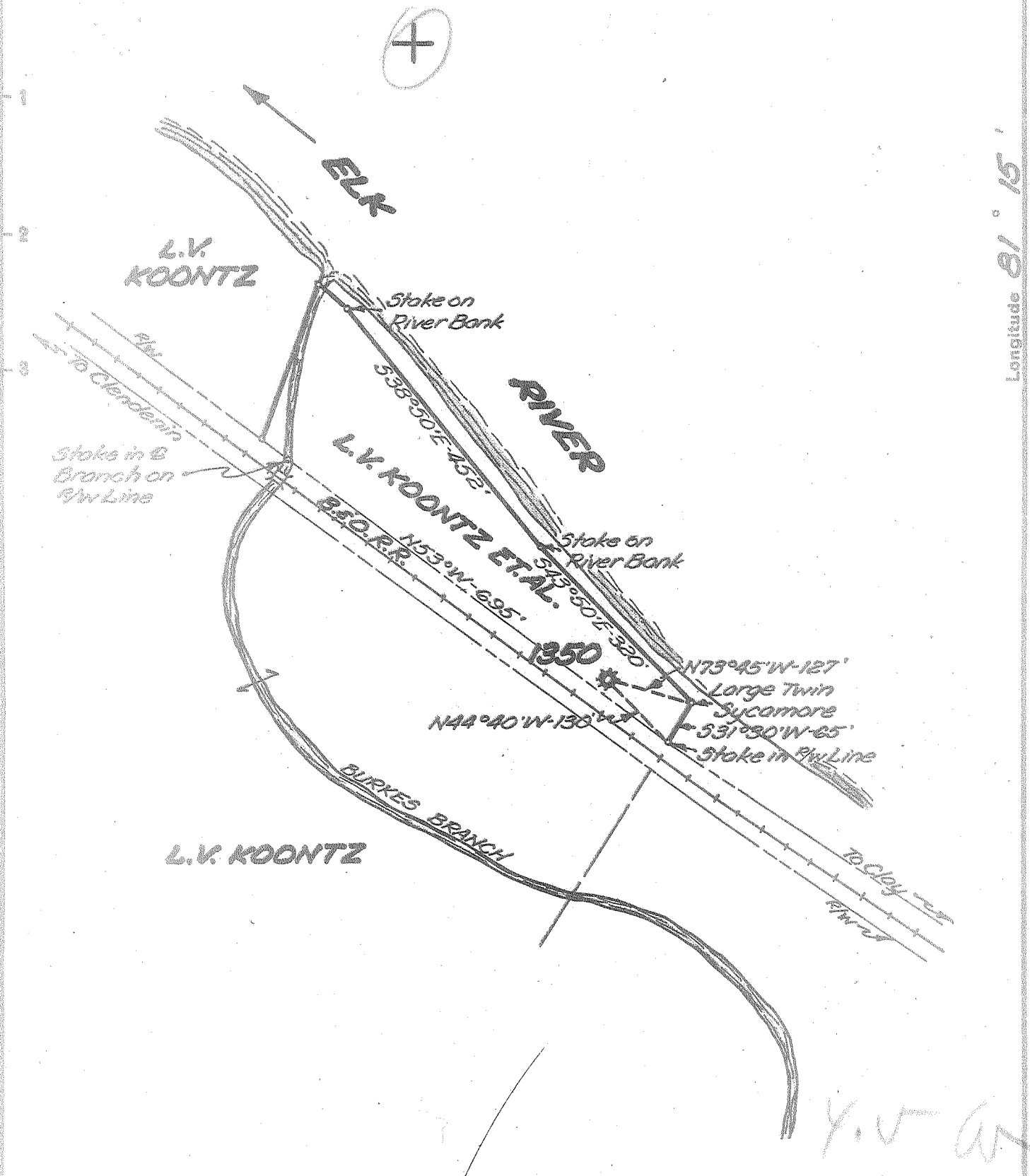


Latitude 38° 30'

Longitude 81° 15'



New Location   
 Drill Deeper   
 Abandonment

✓ APR 26 1954

*L.V. Koontz*  
*077A*

Company UNITED FUEL GAS CO.  
 Address CHARLESTON, W.VA.  
 Farm L.V. KOONTZ, ET AL.  
 Tract \_\_\_\_\_ Acres 2 Lease No. 12369  
 Well (Farm) No. 1 Serial No. 1350  
 Elevation (Spirit Level) 620'  
 Quadrangle CLENDENIN  
 County KANAWHA District BIG SANDY  
 Engineer Leahut R. Jewell  
 Engineer's Registration No. 2529  
 File No. 78-67 Drawing No. \_\_\_\_\_  
 Date 4-9-54 Scale 1"=200'

STATE OF WEST VIRGINIA  
 DEPARTMENT OF MINES  
 OIL AND GAS DIVISION  
 CHARLESTON

WELL LOCATION MAP  
 FILE NO. KAN-1025-A

+ Denotes location of well on United States Topographic Maps, scale 1 to 62,500, latitude and longitude lines being represented by border lines as shown.  
 - Denotes one inch spaces on border line of original tracing.

FEDERAL TRACING CLOTH

L.V. KOONTZ ET AL, No. 1 (1350) - U. F. G. Co. - KAN-1025-A



STATE OF WEST VIRGINIA  
DEPARTMENT OF MINES  
OIL AND GAS DIVISION

1815

Quadrangle Clendenin

WELL RECORD

Oil or Gas Well Gas  
(KIND)

Permit No. 10754

Company UNITED FUEL GAS COMPANY  
Address P.O. Box 1273, Charleston 25, W. Va.  
Farm L. V. & L. K. Koontz Acres 2  
Location (waters) Elk River  
Well No. 1350 Elev. 620'  
District Big Sandy County Kanawha  
The surface of tract is owned in fee by \_\_\_\_\_  
Address \_\_\_\_\_  
Mineral rights are owned by L. V. Koontz, et al  
Address Clendenin, W. Va.  
Drilling commenced November 7, 1923  
Drilling completed December 19, 1923  
Date Shot \_\_\_\_\_ From \_\_\_\_\_ To \_\_\_\_\_  
With \_\_\_\_\_  
Open Flow \_\_\_\_\_ /10ths Water in \_\_\_\_\_ Inch  
60 /10ths Merc. in \_\_\_\_\_ 2 Inch  
Volume 3,061,800 Cu. Ft.  
Rock Pressure 345 lbs. \_\_\_\_\_ hrs.  
Oil \_\_\_\_\_ bbls., 1st 24 hrs.  
Fresh water \_\_\_\_\_ feet \_\_\_\_\_ feet  
Salt water \_\_\_\_\_ feet \_\_\_\_\_ feet

| Casing and Tubing | Used in Drilling | Left in Well    | Packers             |
|-------------------|------------------|-----------------|---------------------|
| Size              |                  |                 |                     |
| 16                |                  |                 | Kind of Packer      |
| 18                |                  |                 | Anchor              |
| 10                |                  | <u>42'4"</u>    | Size of             |
| 8 1/4             | <u>405'</u>      |                 | <u>3"x5-3/16x16</u> |
| 6 5/8             |                  | <u>1317'10"</u> | Depth set           |
| 5 3/16            |                  |                 | <u>1375</u>         |
| 3                 |                  | <u>1655'5"</u>  | Perf. top           |
| 2                 |                  |                 | Perf. bottom        |
| Liners Used       |                  |                 | Perf. top           |
|                   |                  |                 | Perf. bottom        |

CASING CEMENTED \_\_\_\_\_ SIZE \_\_\_\_\_ No. Ft. \_\_\_\_\_ Date \_\_\_\_\_

COAL WAS ENCOUNTERED AT 115 FEET 36 INCHES  
200 FEET 24 INCHES FEET INCHES  
FEET INCHES FEET INCHES

| Formation      | Color | Hard or Soft | Top   | Bottom | Oil, Gas or Water | Depth Found   | Remarks |
|----------------|-------|--------------|-------|--------|-------------------|---------------|---------|
| Soil           |       |              | 0     | 10     | Oil in Salt Sand  | 736'          |         |
| Sand           |       |              | 10    | 30     | Gas in Big Lime   | 1322          |         |
| Lime           |       |              | 30    | 60     | Reduced Hole      | 1359          |         |
| Slate          |       |              | 60    | 90     | Gas 1401-1403     | 37/10 W in 1" |         |
| Lime           |       |              | 90    | 115    | Gas 1498-1506     |               |         |
| Coal           |       |              | 115   | 118    | Gas 1580-1585     |               |         |
| Sand           |       |              | 118   | 160    | Gas 1633-1636     |               |         |
| Slate          |       |              | 160   | 192    |                   |               |         |
| Lime           |       |              | 192   | 200    |                   |               |         |
| Coal           |       |              | 200   | 202    |                   |               |         |
| Lime           |       |              | 202   | 225    |                   |               |         |
| Slate          |       |              | 225   | 325    |                   |               |         |
| Sand           |       |              | 325   | 400    |                   |               |         |
| Slate & Shells |       |              | 400   | 490    |                   |               |         |
| Sand           |       |              | 490   | 520    |                   |               |         |
| Slate & Shells |       |              | 520   | 650    |                   |               |         |
| Salt Sand      |       |              | 650   | 885    |                   |               |         |
| Black Lime     |       |              | 885   | 950    |                   |               |         |
| Sand           |       |              | 950   | 1105   |                   |               |         |
| Maxon Sand     |       |              | 1105  | 1215   |                   |               |         |
| Little Lime    |       |              | 1215  | 1250   |                   |               |         |
| Break          |       |              | 1250  | 1252   |                   |               |         |
| Shell          |       |              | 1252  | 1266   |                   |               |         |
| Pencil Cave    |       |              | 1266  | 1275   |                   |               |         |
| Big Lime       |       |              | 1275  | 1395   |                   |               |         |
| Big Injun      |       |              | 1395  | 1421   |                   |               |         |
| Slate Shells   |       |              | 1421  | 1495   |                   |               |         |
| Weir           |       |              | 1495  |        |                   |               |         |
| Total depth    |       |              | 1638' |        |                   |               |         |

