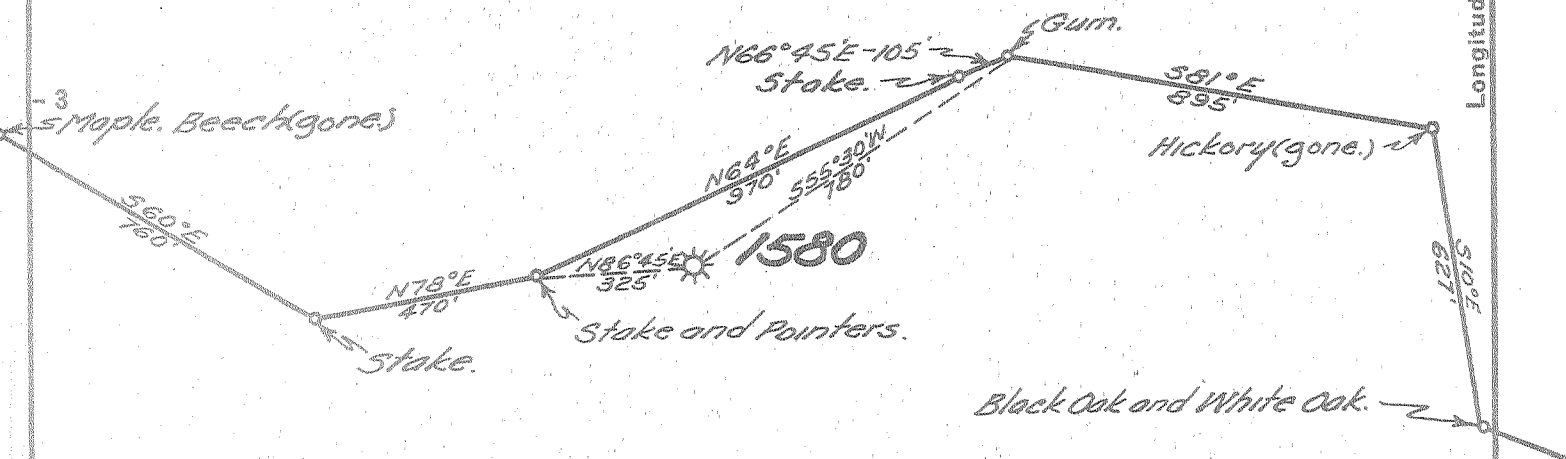


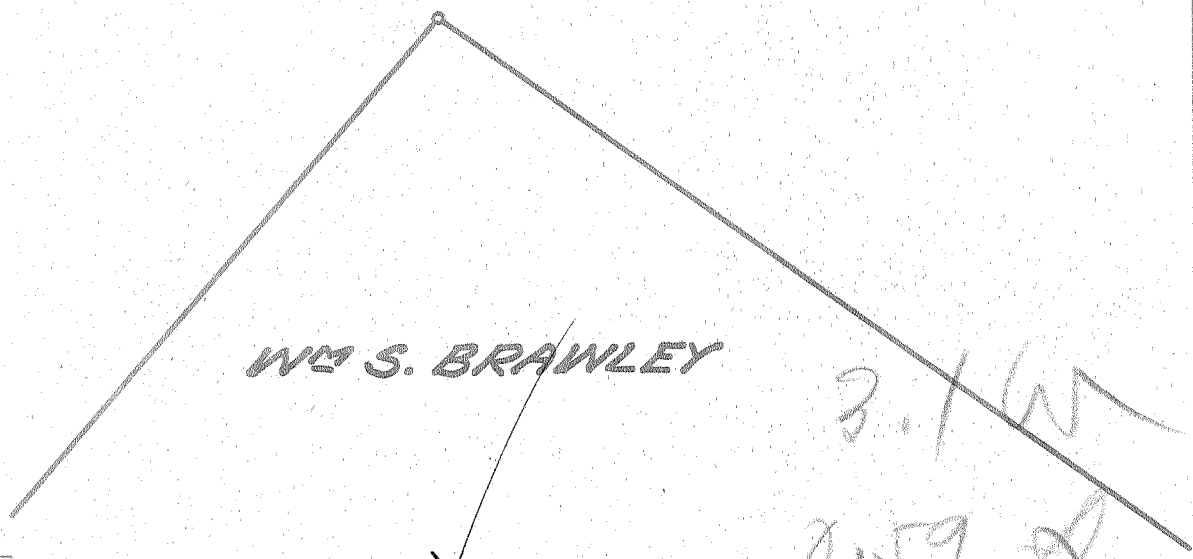
Latitude 39° 30'



BARNHART & TAYLOR



HULINGS & COBB



New Location...   
 Drill Deeper.....   
 Abandonment.....

MAY 3 1954

Company UNITED FUEL GAS CO.  
 Address CHARLESTON, W. VA.  
 Farm HULINGS & COBB  
 Tract \_\_\_\_\_ Acres 341 Lease No. 4528  
 Well (Farm) No. 3 Serial No. 1580  
 Elevation (Spirit Level) 850.00'  
 Quadrangle CLENDENIN  
 County KANAWHA District BIG SANDY  
 Engineer Seibert R. Howell  
 Engineer's Registration No. 2529  
 File No. 78-69 Drawing No. \_\_\_\_\_  
 Date 4-12-54 Scale 1" = 400'

STATE OF WEST VIRGINIA  
 DEPARTMENT OF MINES  
 OIL AND GAS DIVISION  
 CHARLESTON

WELL LOCATION MAP  
 FILE NO. KAN-1032-A

+ Denotes location of well on United States Topographic Maps, scale 1 to 62,500, latitude and longitude lines being represented by border lines as shown.

- Denotes one inch spaces on border line of original tracing.

HULINGS & COBB No. 3 (N80) - U.F.G.C. - KAN-1032-A



STATE OF WEST VIRGINIA  
DEPARTMENT OF MINES  
OIL AND GAS DIVISION

1811

Quadrangle Clendenin

WELL RECORD

Permit No. 1057 A

Oil or Gas Well Gas  
(KIND)

Company UNITED FUEL GAS COMPANY  
Address P.O. Box 1273, Charleston 25, W. Va.  
Farm Haulings & Cobb Acres 341  
Location (waters) Broad Run  
Well No. 1580 Elev. 850'  
District Big Sandy County Kanawha  
The surface of tract is owned in fee by \_\_\_\_\_  
Address \_\_\_\_\_  
Mineral rights are owned by Ruth E. Miller, Atty in  
Fact, et al 1705 Washington Blvd.  
Address Parkersburg, W. Va.  
Drilling commenced 1-12-26  
Drilling completed 2-21-26  
Date Shot \_\_\_\_\_ From \_\_\_\_\_ To \_\_\_\_\_  
With \_\_\_\_\_

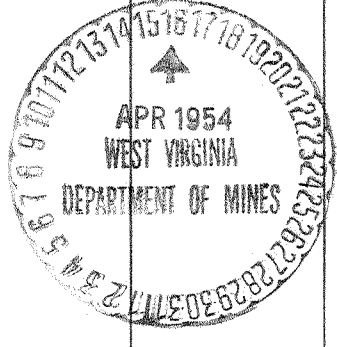
Casing and Tubing	Used in Drilling	Left in Well	Packers
Size			Kind of Packer
16			<u>Anchor</u>
18			Size of
10			<u>3x6-5/8x16</u>
8 1/4	<u>483'</u>		Depth set
6 5/8		<u>1499'</u>	<u>1606'</u>
5 3/16			Perf. top
3		<u>1687'6"</u>	Perf. bottom
2			Perf. top
Liners Used			Perf. bottom

Open Flow \_\_\_\_\_ /10ths Water in \_\_\_\_\_ Inch  
6 /10ths Merc. in 3 Inch  
Volume 969,840 Cu. Ft.  
Rock Pressure 195 lbs. \_\_\_\_\_ hrs.  
Oil \_\_\_\_\_ bbls., 1st 24 hrs.  
Fresh water \_\_\_\_\_ feet \_\_\_\_\_ feet  
Salt water 1000 feet \_\_\_\_\_ feet

CASING CEMENTED \_\_\_\_\_ SIZE \_\_\_\_\_ No. Ft. \_\_\_\_\_ Date \_\_\_\_\_

COAL WAS ENCOUNTERED AT 340 FEET 84 INCHES  
\_\_\_\_\_ FEET \_\_\_\_\_ INCHES \_\_\_\_\_ FEET \_\_\_\_\_ INCHES  
\_\_\_\_\_ FEET \_\_\_\_\_ INCHES \_\_\_\_\_ FEET \_\_\_\_\_ INCHES

Formation	Color	Hard or Soft	Top	Bottom	Oil, Gas or Water	Depth Found	Remarks
Soil			0	5	Hole full water 1000 Show of gas 1511 Hole reduced 1607 Water in Big Lime 1602 Gas 1616-1621 Gas 1624		
Sand			5	40			
Slate			40	130			
Sand			130	170			
Slate			170	250			
Sand			250	315			
Slate			315	340			
Coal			340	347			
Slate			347	400			
Sand			400	460			
Slate			460	510			
Sand			510	570			
Slate			570	700			
Sand			700	750			
Slate			750	775			
Gas Sand			775	850			
Slate			850	865			
Salt Sand			865	1428			
Little Lime			1428	1458			
Break			1458	1460			
Lime Shell			1460	1472			
Pencil Cave			1472	1481			
Big Lime			1481	1609			
Big Injun			1609	1641			
Slate			1641	1676			
Total depth			1676'				



(Over)

NOV 12 1954

