

0 1 2 3

Latitude 38° 35'

1  
2  
3

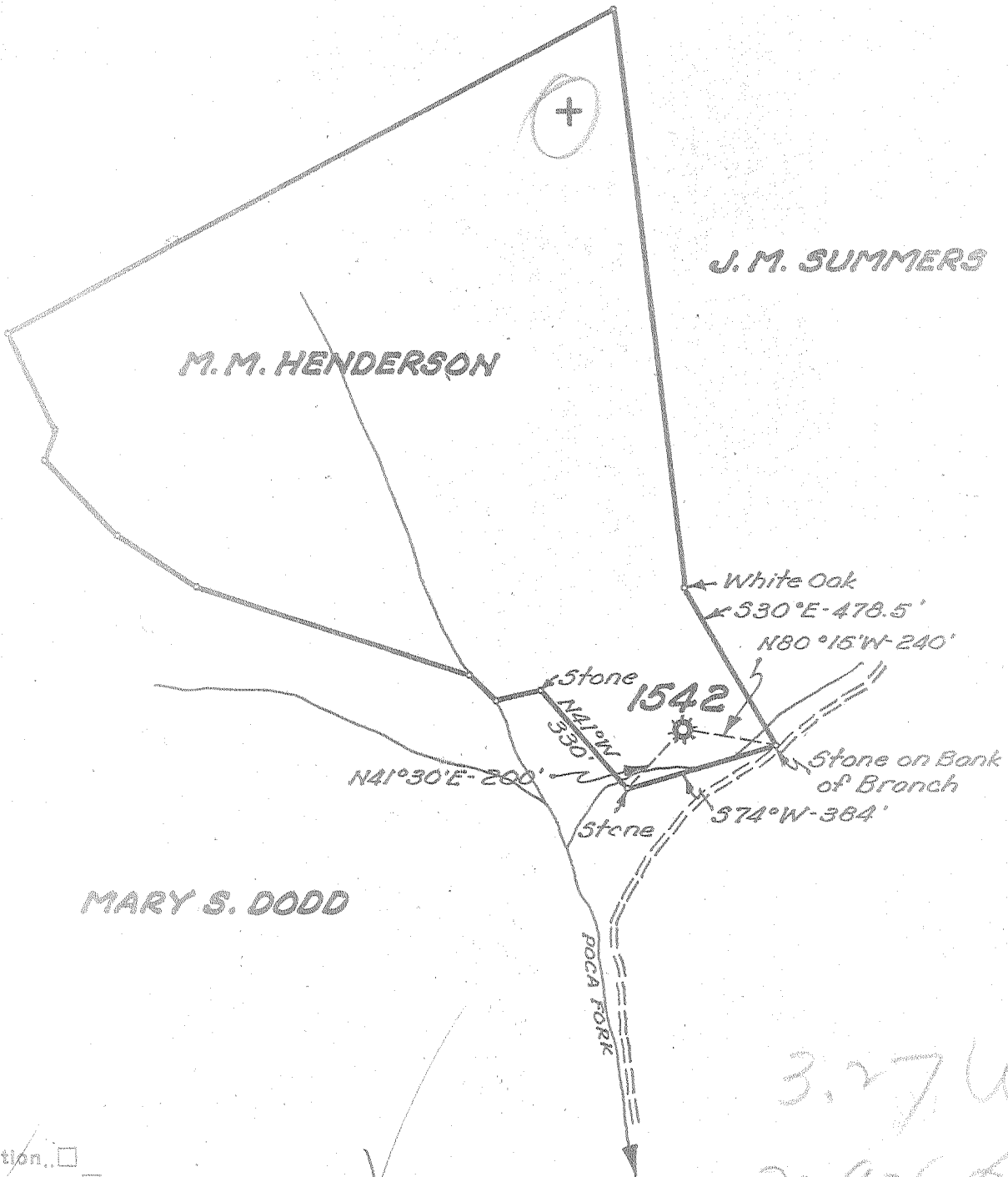
Longitude 81° 25'

C. C. JARRELL

J. M. SUMMERS

M. M. HENDERSON

MARY S. DODD



New Location  
 Drill Deeper  
 Abandonment

AUG 16 1954

3.27 W  
2.92 Q

Company UNITED FUEL GAS CO.  
 Address CHARLESTON, W.VA.  
 Farm M.M. HENDERSON  
 Tract \_\_\_\_\_ Acres 45 Lease No. 4794  
 Well (Farm) No. 1 Serial No. 1542  
 Elevation (Spirit Level) 876.18'  
 Quadrangle WALTON  
 County KANAWHA District ELK  
 Engineer Seybert R. Russell  
 Engineer's Registration No. 2529  
 File No. 70-71 Drawing No. \_\_\_\_\_  
 Date 7-26-54 Scale 1"=400'

STATE OF WEST VIRGINIA  
 DEPARTMENT OF MINES  
 OIL AND GAS DIVISION  
 CHARLESTON

WELL LOCATION MAP  
 FILE NO. KAN-1060-A

+ Denotes location of well on United States Topographic Maps, scale 1 to 62,500, latitude and longitude lines being represented by border lines as shown.  
 - Denotes one inch spaces on border line of original tracing.

M. M. HENDERSON No. 1 (1542) - U. F. G. Co. - KAN-1060-A



STATE OF WEST VIRGINIA  
DEPARTMENT OF MINES  
OIL AND GAS DIVISION

1760

Quadrangle Walton  
Permit No. 1060-A

WELL RECORD

Oil or Gas Well Gas  
(KIND)

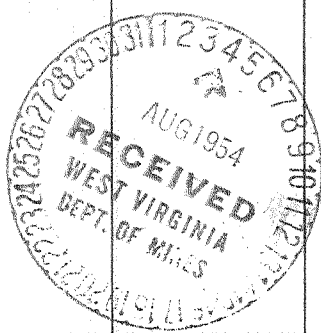
Company UNITED FUEL GAS COMPANY  
Address P.O. Box 1273, Charleston 25, W. Va.  
Farm M. M. Henderson Acres 45  
Location (waters) Poca Fork  
Well No. 1542 Elev. 876.18'  
District Elk County Kanawha  
The surface of tract is owned in fee by \_\_\_\_\_  
Address \_\_\_\_\_  
Mineral rights are owned by M. M. Henderson  
Address Spencer, W. Va.  
Drilling commenced 12-2-25  
Drilling completed 1-19-26  
Date Shot 1-23-26 From \_\_\_\_\_ To \_\_\_\_\_  
With 30 qts.  
Open Flow 26 /10ths Water in \_\_\_\_\_ 2 \_\_\_\_\_ Inch  
/10ths Merc. in \_\_\_\_\_ Inch  
Volume 244,000 Cu. Ft.  
Rock Pressure 185 lbs. \_\_\_\_\_ hrs.  
Oil \_\_\_\_\_ bbls., 1st 24 hrs.  
Fresh water \_\_\_\_\_ feet \_\_\_\_\_ feet  
Salt water \_\_\_\_\_ feet \_\_\_\_\_ feet

Casing and Tubing	Used in Drilling	Left in Well	Packers
Size			
16			Kind of Packer Anchor
18			
10			Size of 3x5-3/16
8 1/4	462'	409'	
6 5/8		1708'	Depth set 1784'
5 3/16			
3		1895' 2"	Perf. top
<del>2 1 1/2"</del>		1895'	Perf. bottom
Liners Used			Perf. top
			Perf. bottom

CASING CEMENTED \_\_\_\_\_ SIZE \_\_\_\_\_ No. Ft. \_\_\_\_\_ Date \_\_\_\_\_

COAL WAS ENCOUNTERED AT \_\_\_\_\_ FEET \_\_\_\_\_ INCHES  
\_\_\_\_\_ FEET \_\_\_\_\_ INCHES \_\_\_\_\_ FEET \_\_\_\_\_ INCHES  
\_\_\_\_\_ FEET \_\_\_\_\_ INCHES \_\_\_\_\_ FEET \_\_\_\_\_ INCHES

Formation	Color	Hard or Soft	Top	Bottom	Oil, Gas or Water	Depth Found	Remarks
Surface			0	8	Gas 1755-1760 No test. Hole reduced 1770' Injun Gas 1822-1831		
Sand			8	30			
Slate			30	50			
Sand			50	110			
Red Rock			110	400			
Slate & Shells			400	510			
Sand			510	660			
Slate			660	720			
Sand			720	750			
Slate			750	810			
Sand			810	875			
Black Slate			875	1065			
Sand			1065	1105			
Black Slate			1105	1135			
Slate & Shells			1135	1180			
Salt Sand			1180	1575			
Slate			1575	1584			
Lime			1584	1612			
Slate			1612	1617			
Lime			1617	1648			
Slate			1648	1650			
Sand			1650	1671			
Slate			1671	1679			
Big Lime			1679	1811			
Big Injun			1811	1850			
Slate			1850	1882			
Total depth			1882'				



APR 22 1955

(Over)

