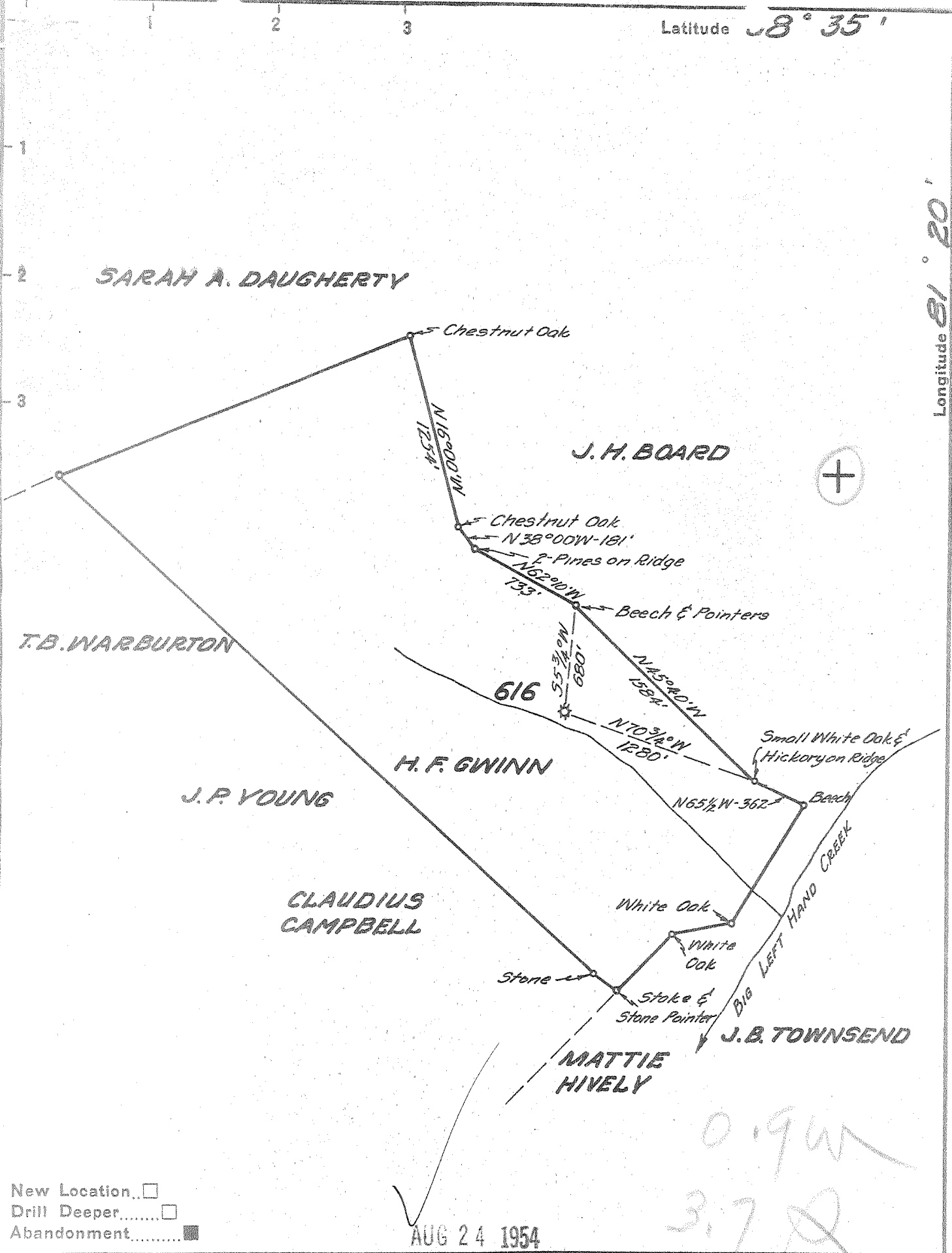


Latitude  $38^{\circ} 35'$

Longitude  $81^{\circ} 20'$



New Location...   
 Drill Deeper.....   
 Abandonment.....

AUG 24 1954

0.94  
 3.72

Company UNITED FUEL GAS CO.  
 Address CHARLESTON, W. VA.  
 Farm H. F. GWINN  
 Tract \_\_\_\_\_ Acres 170 Lease No. 4452  
 Well (Farm) No. \_\_\_\_\_ Serial No. 616  
 Elevation (Spirit Level) 694.0  
 Quadrangle WALTON  
 County KANAWHA District BIG SANDY  
 Engineer Joseph R. Jewell  
 Engineer's Registration No. 2529  
 File No. 76-71 Drawing No. \_\_\_\_\_  
 Date 8-3-54 Scale 1"=800

STATE OF WEST VIRGINIA  
 DEPARTMENT OF MINES  
 OIL AND GAS DIVISION  
 CHARLESTON

WELL LOCATION MAP  
 FILE NO. KAN-1065-A

+ Denotes location of well on United States Topographic Maps, scale 1 to 62,500, latitude and longitude lines being represented by border lines as shown.

- Denotes one inch spaces on border line of original tracing.



STATE OF WEST VIRGINIA  
DEPARTMENT OF MINES  
OIL AND GAS DIVISION

1948

Quadrangle Walton

Permit No. 1057

WELL RECORD

Gas  
Oil or Gas Well (KIND)

Company UNITED FUEL GAS CO.  
 Address P.O. Box 1273, Charleston 25, W. Va.  
 Farm H. F. Gwinn Acres 170  
 Location (waters) Big Left Hand Creek  
 Well No. 616 Elev. 694'  
 District Big Sandy County Kanawha  
 The surface of tract is owned in fee by \_\_\_\_\_  
 Address \_\_\_\_\_  
 Mineral rights are owned by Eula A. Gwinn Hamilton, et al  
922 No. Campbell Ave. Tucson, Arizona  
 Address \_\_\_\_\_  
 Drilling commenced 7-13-15  
 Drilling completed 8-13-15  
 Date Shot \_\_\_\_\_ From \_\_\_\_\_ To \_\_\_\_\_  
 With \_\_\_\_\_  
 Open Flow \_\_\_\_\_ /10ths Water in \_\_\_\_\_ Inch  
5 /10ths Merc. in 6-5/8 Inch  
 Volume 4,152,000 Cu. Ft.  
 Rock Pressure 380 lbs. 48 hrs.  
 Oil \_\_\_\_\_ bbls., 1st 24 hrs.  
 Fresh water \_\_\_\_\_ feet  
 Salt water 1010 feet

Casing and Tubing	Used in Drilling	Left in Well	Packers
Size			
16			Kind of Packer <u>Parmaco</u>
13		<u>17'</u>	
10			Size of <u>3-3/16x16</u>
8 1/4		<u>1447' 7"</u>	Depth <u>1550</u>
6 5/8			
5 3/16			
3		<u>1622'</u>	Perf. top
2			Perf. bottom
Liners Used			Perf. top
			Perf. bottom

CASING CEMENTED \_\_\_\_\_ SIZE \_\_\_\_\_ No. Ft. \_\_\_\_\_ Date \_\_\_\_\_  
 COAL WAS ENCOUNTERED AT 254 FEET 72 INCHES  
 \_\_\_\_\_ FEET \_\_\_\_\_ INCHES FEET \_\_\_\_\_ INCHES  
 \_\_\_\_\_ FEET \_\_\_\_\_ INCHES FEET \_\_\_\_\_ INCHES

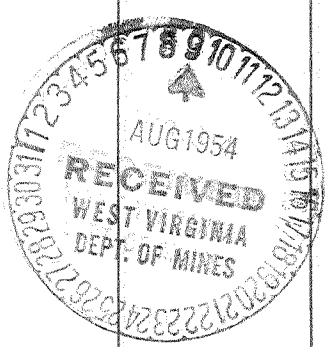
Formation	Color	Hard or Soft	Top	Bottom	Oil, Gas or Water	Depth Found	Remarks
Broken			20	110			
Sand			110	160			
Lime			160	210			
Little Dunkard			210	254			
Coal			254	260			
Slate			260	280			
Big Dunkard			280	340			
Sand & Lime			340	845			
Gas Sand			845	855			
Black Lime			855	870			
1st Salt Sand			870	910			
Break			910	912			
2nd Salt Sand			912	1360			
Maxon Sand			1360	1396			
Little Lime			1396	1426			
Big Lime			1426	1570			
Big Injun			1570	1607			
Slate			1607	1624			
Total depth			1624				



Hole full water in Coal

Small show of gas at 945' Water at 970'  
Big Water at 1010'

Reduced hole to 5-3/16" at 1538'  
Gas at 1580' & 1593' and 1600'  
Oil in Big Lime at 1467' had 6 bailers  
1st hr., but all gone in 16 hrs.



(Over)

JAN 23 1958

