

Latitude 38° 30'

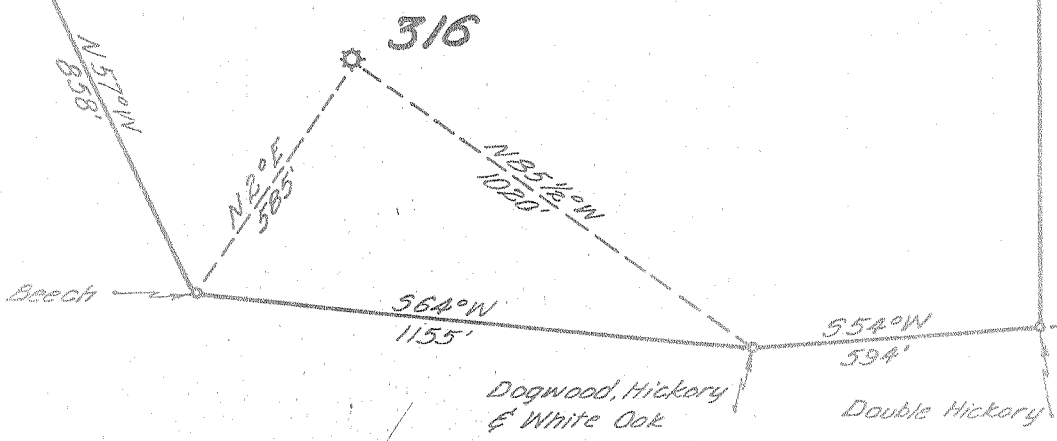
Longitude 81° 20'

ELK RIVER

P.C. HUFFMAN

P.J. & J.A. ROBERTSON

Stake, Black Oak Pointer



BROWN & REAMER

OCT 6 1954

~~OCT 3 1954~~

1.78 W
1.75 W

New Location
 Drill Deeper
 Abandonment

Company UNITED FUEL GAS CO.
 Address CHARLESTON, W.VA.
 Farm P.J. & J.A. ROBERTSON
 Tract _____ Acres 65 7/16 Lease No. 581
 Well (Farm) No. _____ Serial No. 316
 Elevation (Spirit Level) 919'
 Quadrangle CLENDENIN
 County KANAWHA District BIG SANDY
 Engineer Paul E. Jorclius
 Engineer's Registration No. 669
 File No. 76-67 Drawing No. _____
 Date 9-22-54 Scale 1"=400'

STATE OF WEST VIRGINIA
 DEPARTMENT OF MINES
 OIL AND GAS DIVISION
 CHARLESTON

WELL LOCATION MAP
 FILE NO. KAN-1074-A

+ Denotes location of well on United States Topographic Maps, scale 1 to 62,500, latitude and longitude lines being represented by border lines as shown.

- Denotes one inch spaces on border line of original tracing.



STATE OF WEST VIRGINIA
DEPARTMENT OF MINES
OIL AND GAS DIVISION

4107

WELL RECORD

Quadrangle Clendenin

Permit No. 1744

Oil or Gas Well Gas
(KIND)

Company UNITED FUEL GAS CO.
Address P.O. Box 1273 Charleston 25, W. Va.
Farm P.J. & J.A. Robertson Acres 65-3/16
Location (waters) Elk River
Well No. 316 Elev. 919'
District Big Sandy County Kanawha
The surface of tract is owned in fee by _____
Address _____
Mineral rights are owned by James D. Robertson, et al
Address Queen Shoals, W. Va.
Drilling commenced 3-26-11
Drilling completed 5-4-11
Date Shot _____ From _____ To _____
With _____

Casing and Tubing	Used in Drilling	Left in Well	Packers
Size			Kind of Packer
16			
13		16	Anchor
10			Size of
8 1/4	770		3x6-5/8x16
6 5/8		1637	Depth set
5 3/16			1652'
3		1984'	Perf. top
2			Perf. bottom
Liners Used			Perf. top
			Perf. bottom

Open Flow _____ /10ths Water in _____ Inch
1.5 /10ths Merc. in 6-5/8" Inch
Volume 7,194,000 Cu. Ft.
Rock Pressure 520 lbs. _____ hrs.
Oil _____ bbls., 1st 24 hrs.
Fresh water _____ feet _____ feet
Salt water 1100 feet _____ feet

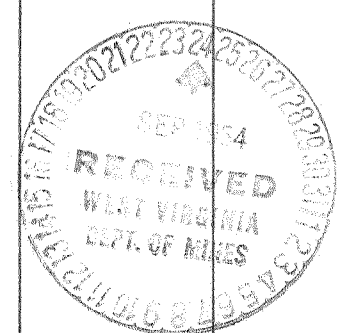
CASING CEMENTED _____ SIZE _____ No. Ft. _____ Date _____

COAL WAS ENCOUNTERED AT 725 FEET 60 INCHES

FEET INCHES FEET INCHES

FEET INCHES FEET INCHES

Formation	Color	Hard or Soft	Top	Bottom	Oil, Gas or Water	Depth Found	Remarks
Soil				30			
Sand			30	50			
White Slate			60	100			
B.Lime			100	130			
Sand			130	200			
Black Slate			200	250			
Sand			250	325			
Lime			325	400			
White Slate			400	475			
Sand			475	600			
Black Slate			600	675			
White Lime			675	700			
Slate			700	725			
Coal			725	730			
Black Slate			730	800			
Sand			800	850			
Lime			850	900			
Slate			900	960			
Lime			960	1000			
Sand			1000	1065			
Black Slate			1065	1075			
Salt Sand			1075	1250	Water 1100'		
Slate & Red Rock			1250	1260			
Sand			1260	1430			
Red Rock			1430	1530			
Maxon Sand			1530	1575			
Slate			1575	1580			
Little Lime			1580	1610			
Slate			1610	1615			
White Lime			1615	1620			
Pencil Cave			1620	1635			
Big Lime			1635	1745			
Injun Sand			1745	1780			
Slate			1780	1845			
weir Sand			18 45	1976	Gas 1920-1950		
Total depth			1984				



JUN 17 1955

