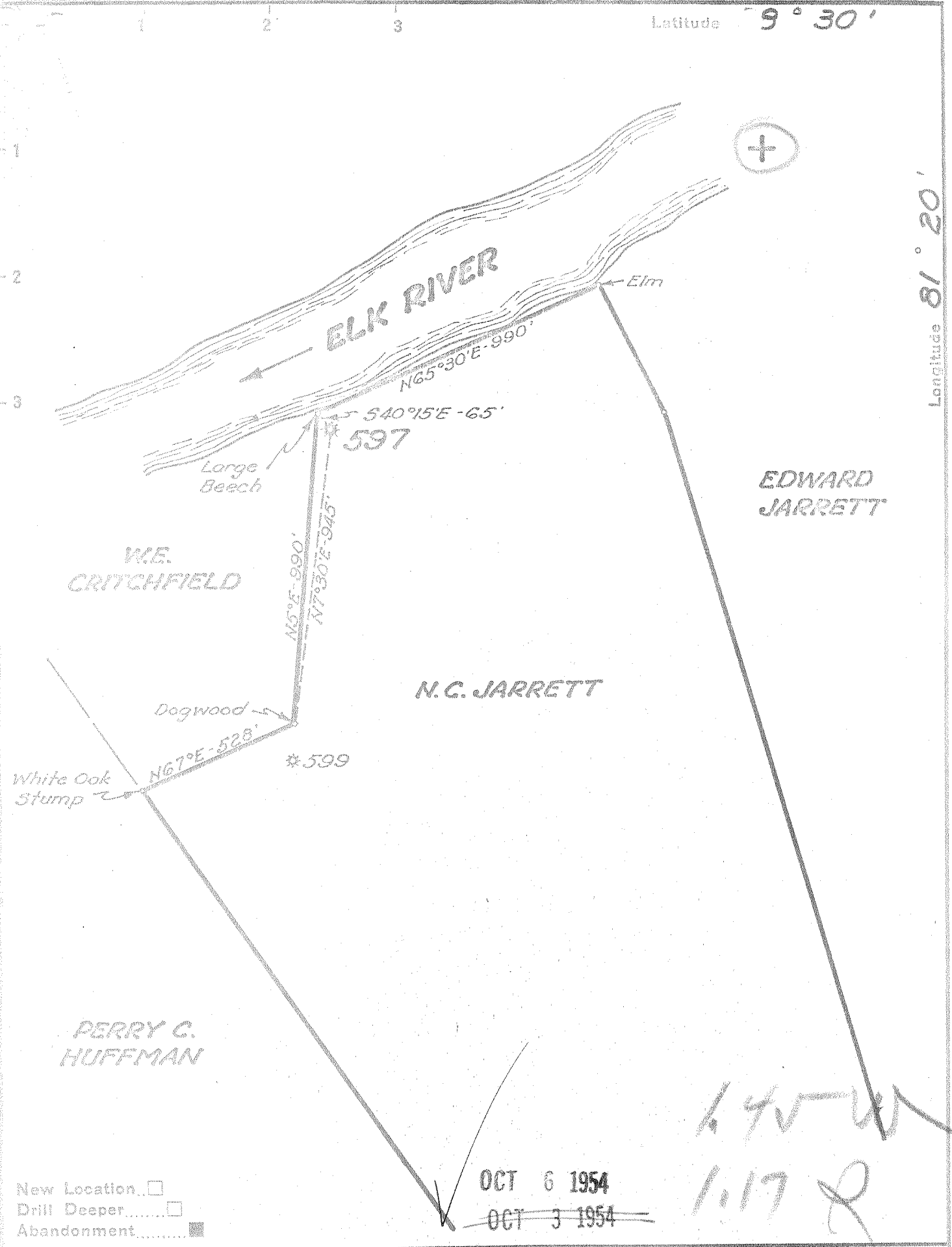


Latitude 9° 30'

Longitude 81° 20'



New Location   
 Drill Deeper   
 Abandonment

OCT 6 1954  
~~OCT 3 1954~~

*Handwritten notes:*  
 1.45 W  
 1.17 R

Company UNITED FUEL GAS CO.  
 Address CHARLESTON, W. VA.  
 Farm N. C. JARRETT  
 Tract \_\_\_\_\_ Acres 128 Lease No. 11965  
 Well (Farm) No. \_\_\_\_\_ Serial No. 597  
 Elevation (Spirit Level) 617.0'  
 Quadrangle CLENDENIN  
 County KANAWHA District BIG SANDY  
 Engineer Gay S. Jacobs  
 Engineer's Registration No. 669  
 File No. 76-67 Drawing No. \_\_\_\_\_  
 Date 9-17-54 Scale 1"=400'

STATE OF WEST VIRGINIA  
 DEPARTMENT OF MINES  
 OIL AND GAS DIVISION  
 CHARLESTON

WELL LOCATION MAP  
 FILE NO. KAN-1079-A

+ Denotes location of well on United States Topographic Maps, scale 1 to 62,500, latitude and longitude lines being represented by border lines as shown.

- Denotes one inch spaces on border line of original tracing.

*Handwritten summary:* N. C. JARRETT NO. 597 - U.F. 6, Co - KAN-1079-A



STATE OF WEST VIRGINIA  
DEPARTMENT OF MINES  
OIL AND GAS DIVISION

1835

WELL RECORD

Quadrangle Clendenin

Permit No. 1079A

Oil or Gas Well Gas  
(KIND)

Company UNITED FUEL GAS CO.  
Address P.O. Box 1273, Charleston 25, W. Va.  
Farm N. C. Jarrett Acres 128  
Location (waters) Elk River  
Well No. 597 Elev. 617.0'  
District Big Sandy County Kanawha  
The surface of tract is owned in fee by \_\_\_\_\_  
Address \_\_\_\_\_  
Mineral rights are owned by Silas W. Jarrett, Agt.  
Box 395 Address Clendenin, W. Va.  
Drilling commenced 4-10-14  
Drilling completed 5-22-14  
Date Shot \_\_\_\_\_ From \_\_\_\_\_ To \_\_\_\_\_  
With \_\_\_\_\_  
Open Flow \_\_\_\_\_ /10ths Water in \_\_\_\_\_ Inch  
26 /10ths Merc. in 3 Inch  
Volume 2,204,000 Cu. Ft.  
Rock Pressure 320 lbs. \_\_\_\_\_ hrs.  
Oil \_\_\_\_\_ bbls., 1st 24 hrs.  
Fresh water \_\_\_\_\_ feet \_\_\_\_\_ feet  
Salt water 800 feet \_\_\_\_\_ feet

Casing and Tubing	Used in Drilling	Left in Well	Packers
Size			Kind of Packer
16			
13			<u>Callanan</u>
10		<u>62'7"</u>	Size of
8 1/4	<u>475'</u>		<u>3x6-5/8x20</u>
6 5/8		<u>1328'4"</u>	Depth set
5 3/16			
3			Perf. top
2			Perf. bottom
Liners Used			Perf. top
			Perf. bottom

CASING CEMENTED \_\_\_\_\_ SIZE \_\_\_\_\_ No. Ft. \_\_\_\_\_ Date \_\_\_\_\_

COAL WAS ENCOUNTERED AT 440 FEET 84 INCHES  
\_\_\_\_\_  
FEET INCHES FEET INCHES  
\_\_\_\_\_  
FEET INCHES FEET INCHES

Formation	Color	Hard or Soft	Top	Bottom	Oil, Gas or Water	Depth Found	Remarks
Gravel			0	63	1st Salt Water	800	
Sand			63	120	Gas in Maxon Sand	1243'	
Slate			120	300	1st gas in Big Lime	1367'	
Sand			300	360	2nd gas in Big Lime	1389'	
Slate			360	440	1st Gas in Squaw Sand	1621'	
Coal			440	447	2nd Gas in Squaw Sand	1664'	
Slate			447	560			
Slate & Shells			560	680			
1st Salt Sand			680	1115			
Lime & Sand			1115	1210			
Maxon Sand			1210	1300			
Slate			1300	1302			
Little Lime			1302	1315			
Pencil Cave			1315	1320			
Big Lime			1320	1453			
Injun Sand			1453	1482			
Red Rock			1482	1500			
Sand & Shells			1500	1540			
Squaw Sand			1540	1662			
Slate			1662	1667			
Total depth			1667'				

22 23 24 25 26 27 28 29 30 31  
SEP 1954  
RECEIVED  
WEST VIRGINIA  
DEPT. OF MINES

JAN 7 1955

