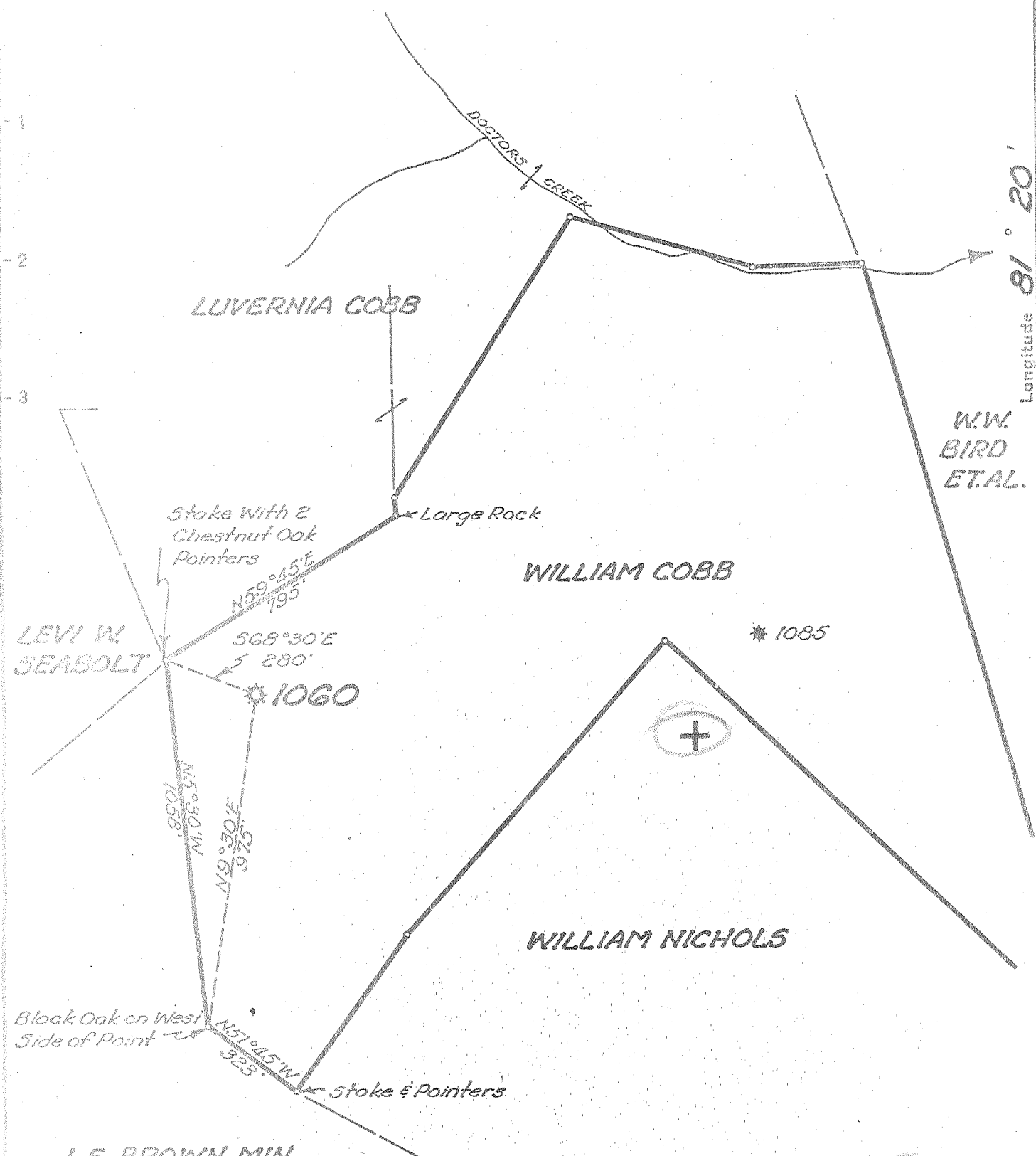


Latitude 8° 35'

Longitude 81° 20'



New Location
 Drill Deeper
 Abandonment

OCT 6 1954

~~OCT 3 1954~~

2.5 W
507 Q

Company UNITED FUEL GAS CO.
 Address CHARLESTON, W.VA.
 Farm WILLIAM COBB
 Tract _____ Acres 81 Lease No. 11429
 Well (Farm) No. 2 Serial No. 1060
 Elevation (Spirit Level) 1168.25'
 Quadrangle WALTON
 County KANAWHA District BIG SANDY
 Engineer Paul E. Joachim
 Engineer's Registration No. 669
 File No. 74-69 Drawing No. _____
 Date 9-17-54 Scale 1" = 400'

STATE OF WEST VIRGINIA
 DEPARTMENT OF MINES
 OIL AND GAS DIVISION
 CHARLESTON

WELL LOCATION MAP
 FILE NO. KAN-1081-B

+ Denotes location of well on United States Topographic Maps, scale 1 to 62,500, latitude and longitude lines being represented by border lines as shown.

- Denotes one inch spaces on border line of original tracing.