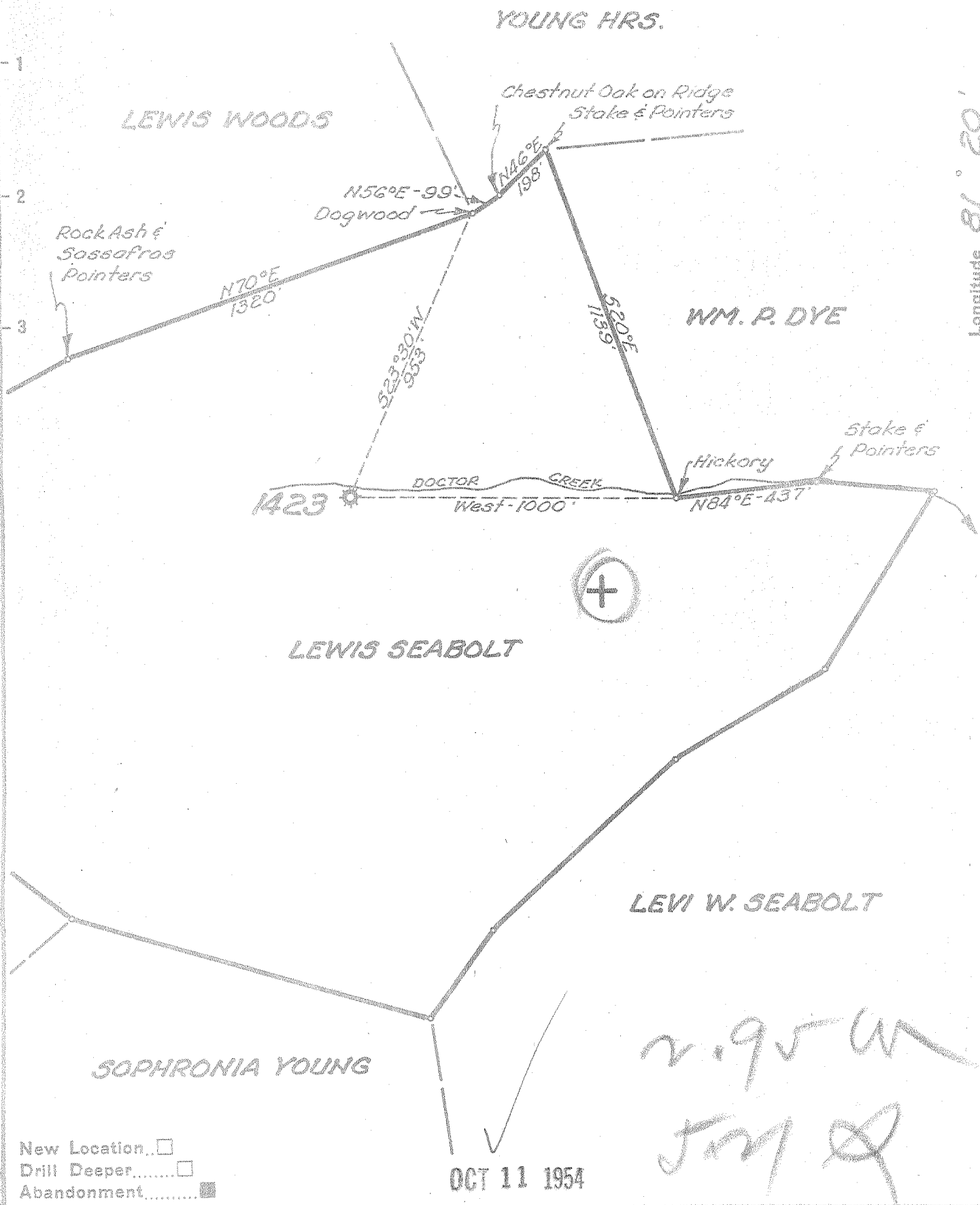


Latitude 38° 35'

Longitude 81° 20'



New Location   
 Drill Deeper   
 Abandonment

OCT 11 1954

Company UNITED FUEL GAS CO.  
 Address CHARLESTON, W.VA.  
 Farm LEWIS SEABOLT  
 Tract \_\_\_\_\_ Acres 120 Lease No. 11431  
 Well (Farm) No. \_\_\_\_\_ Serial No. 1423  
 Elevation (Spirit Level) 914.3'  
 Quadrangle WALTON  
 County KANAWHA District BIG SANDY  
 Engineer Paul E. [Signature]  
 Engineer's Registration No. 669  
 File No. 74-69 Drawing No. \_\_\_\_\_  
 Date 9-17-54 Scale 1"=400'

STATE OF WEST VIRGINIA  
 DEPARTMENT OF MINES  
 OIL AND GAS DIVISION  
 CHARLESTON

**WELL LOCATION MAP**  
 FILE NO. KAN-1082-A

+ Denotes location of well on United States Topographic Maps, scale 1 to 62,500, latitude and longitude lines being represented by border lines as shown.

- Denotes one inch spaces on border line of original tracing.

LEWIS SEABOLT No. 1423 - U.F.G.C. - KAN-1082-A



STATE OF WEST VIRGINIA  
DEPARTMENT OF MINES  
OIL AND GAS DIVISION

1879

WELL RECORD

Quadrangle Walton

Permit No. AP 1088 A

Oil or Gas Well Gas  
(KIND)

Company UNITED FUEL GAS CO.  
Address P.O. Box 1273, Charleston 25, W. Va.  
Farm Lewis Seabolt Acres 120  
Location (waters) Doctor Creek  
Well No. 1423 Elev. 914.3'  
District Big Sandy County Kanawha  
The surface of tract is owned in fee by \_\_\_\_\_  
Address \_\_\_\_\_  
Mineral rights are owned by George Seabolt, et al  
Address Burrville, Tenn.  
Drilling commenced 11-8-24  
Drilling completed 7-31-25  
Date Shot \_\_\_\_\_ From \_\_\_\_\_ To \_\_\_\_\_  
With \_\_\_\_\_

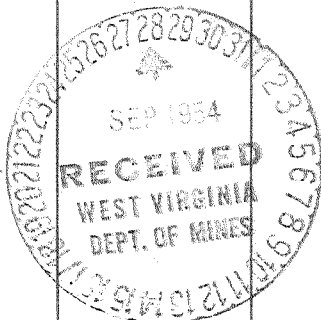
Casing and Tubing	Used in Drilling	Left in Well	Packers
Size			Kind of Packer
16			<u>Anchor</u>
13			Size of
10			<u>3x5-3/16"</u>
8 1/4	<u>460'</u>		Depth set
6 1/2		<u>1731'</u>	<u>1819'</u>
5 3/16			Perf. top
3		<u>1927'</u>	Perf. bottom
2			Perf. top
Liners Used			Perf. bottom

Open Flow 14/10ths Water in \_\_\_\_\_ 3 Inch  
\_\_\_\_\_/10ths Merc. in \_\_\_\_\_ Inch  
Volume 400,000 Cu. Ft.  
Rock Pressure 130 lbs. \_\_\_\_\_ hrs.  
Oil \_\_\_\_\_ bbls., 1st 24 hrs.  
Fresh water \_\_\_\_\_ feet \_\_\_\_\_ feet  
Salt water \_\_\_\_\_ feet \_\_\_\_\_ feet

CASING CEMENTED \_\_\_\_\_ SIZE \_\_\_\_\_ No. Ft. \_\_\_\_\_ Date \_\_\_\_\_

COAL WAS ENCOUNTERED AT \_\_\_\_\_ FEET \_\_\_\_\_ INCHES  
\_\_\_\_\_  
\_\_\_\_\_ FEET \_\_\_\_\_ INCHES \_\_\_\_\_ FEET \_\_\_\_\_ INCHES  
\_\_\_\_\_ FEET \_\_\_\_\_ INCHES \_\_\_\_\_ FEET \_\_\_\_\_ INCHES

Formation	Color	Hard or Soft	Top	Bottom	Oil, Gas or Water	Depth Found	Remarks
Soil			0	14	Hole reduced to 5-3/16 at 1782'		
Sand			14	50			
Red Rock			50	175	This well completed in Salt sand at a depth 1175'. 11-18-24. Began drilling deeper June 17, 1925.		
Slate			175	250			
Red Rock			250	330			
Sand			330	445			
Slate			445	465			
Lime			465	500			
Sand			500	535			
Slate & Shells			535	930			
Sand			930	990			
Slate & Shells			990	1110			
Salt Sand			1110	1520	Gas 1147-1150 and 1172-1174'.		
Black Lime			1520	1550			
Maxon			1550	1660			
Little Lime			1660	1692			
Pencil Cave			1692	1694			
Big Lime			1694	1836	Gas 1808'		
Keener			1836	1855			
Big Injun			1855	1895	Gas 1857-1860		
Slate			1895	1913	Gas 1861-1863'		
Total depth			1913'				



APR 22 1955

