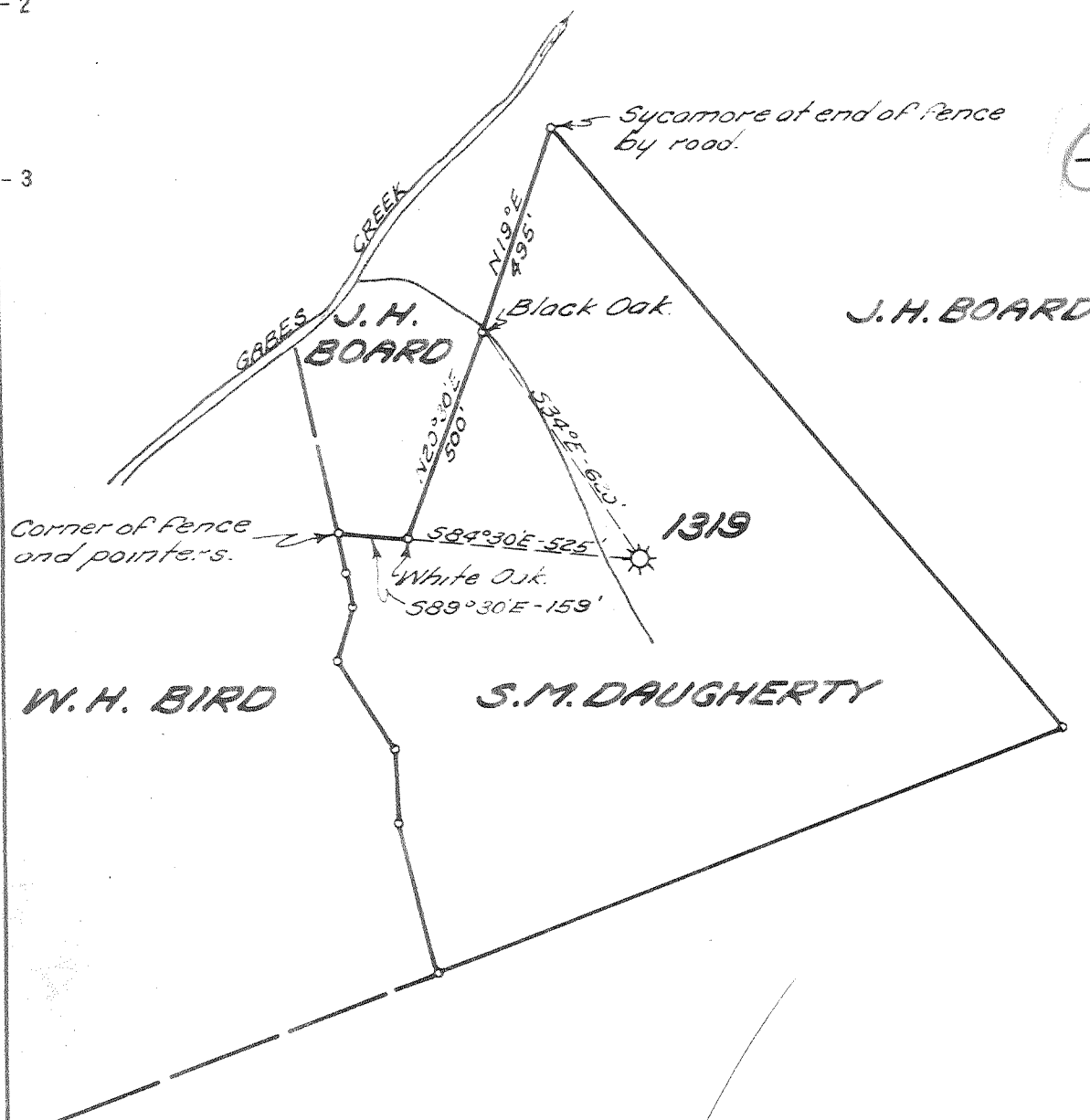


Latitude 38° 35'

Longitude 81° 20'



New Location

Drill Deeper

Abandonment

NOV 1 1954

1319 W  
3.12 2

Company UNITED FUEL GAS CO.  
 Address CHARLESTON, W. VA.  
 Farm S. M. DAUGHERTY  
 Tract \_\_\_\_\_ Acres 75 Lease No. 12388  
 Well (Farm) No. \_\_\_\_\_ Serial No. 1319  
 Elevation (Spirit Level) 830.50'  
 Quadrangle WALTON  
 County KANAWHA District BIG SANDY  
 Engineer Seybert R. Howell  
 Engineer's Registration No. 2529  
 File No. 76-71 Drawing No. \_\_\_\_\_  
 Date 10-14-54 Scale 1" = 400'

STATE OF WEST VIRGINIA  
 DEPARTMENT OF MINES  
 OIL AND GAS DIVISION  
 CHARLESTON

WELL LOCATION MAP  
 FILE NO. KAN-1106-A

+ Denotes location of well on United States Topographic Maps, scale 1 to 62,500, latitude and longitude lines being represented by border lines as shown.

- Denotes one inch spaces on border line of original tracing.

6-6-220

S.M. DAUGHERTY No. 1319 - U. F. G. Co.

KAN-1106-A



STATE OF WEST VIRGINIA  
DEPARTMENT OF MINES  
OIL AND GAS DIVISION

1832

WELL RECORD

Quadrangle Walton

Permit No. 11064

Oil or Gas Well Gas  
(KIND)

Company UNITED FUEL GAS CO.  
Address P.O. Box 1273, Charleston 25, W. Va.  
Farm S. M. Daugherty Acres 75  
Location (waters) Gabe Creek  
Well No. 1319 Elev. 830.50'  
District Big Sandy County Kanawha  
The surface of tract is owned in fee by \_\_\_\_\_  
Address \_\_\_\_\_  
Mineral rights are owned by John Z. Neal, et al  
Farmers & Citizens State Bank, Clendenin, W. Va.  
Address \_\_\_\_\_

Drilling commenced 4-3-23  
Drilling completed 5-11-23  
Date Shot \_\_\_\_\_ From \_\_\_\_\_ To \_\_\_\_\_  
With \_\_\_\_\_

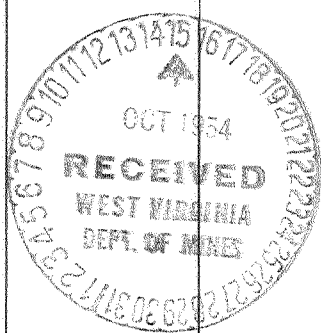
Open Flow 50 /10ths Water in 3 Inch  
\_\_\_\_\_ /10ths Merc. in \_\_\_\_\_ Inch  
Volume 744,120 Cu. Ft.  
Rock Pressure 240 lbs. \_\_\_\_\_ hrs.  
Oil \_\_\_\_\_ bbls., 1st 24 hrs.  
Fresh water \_\_\_\_\_ feet \_\_\_\_\_ feet  
Salt water 1125 feet \_\_\_\_\_ feet

Casing and Tubing	Used in Drilling	Left in Well	Packers
Size			
16			Kind of Packer
13			<u>Anchor</u>
10		<u>50</u>	Size of
8 1/4	<u>490'</u>		<u>3"x5-3/16"</u>
6 3/8		<u>1623</u>	Depth set
5 3/16			<u>1698</u>
3		<u>1816-6"</u>	Perf. top
2			Perf. bottom
Liners Used			Perf. top
			Perf. bottom

CASING CEMENTED \_\_\_\_\_ SIZE \_\_\_\_\_ No. Ft. \_\_\_\_\_ Date \_\_\_\_\_

COAL WAS ENCOUNTERED AT \_\_\_\_\_ FEET \_\_\_\_\_ INCHES  
\_\_\_\_\_ FEET \_\_\_\_\_ INCHES FEET \_\_\_\_\_ INCHES  
\_\_\_\_\_ FEET \_\_\_\_\_ INCHES FEET \_\_\_\_\_ INCHES

Formation	Color	Hard or Soft	Top	Bottom	Oil, Gas or Water	Depth Found	Remarks
Conductor			0	13			
Sand			13	75			Show gas 1120'
Red Rock			75	145			Water 1125'
Slate & Shells			145	290			Gas 1735-1737', 1748-1753.
Sand			290	320			
Slate & Shells			320	420			Reduced hole 1686'
Sand			420	480			
Slate & Shells			480	520			
Sand			520	600			
Slate & Shells			600	750			
Lime			750	820			
Slate & Shells			820	900			
Sand			900	945			
Lime			945	1035			
Salt Sand			1035	1445			
Maxon Sand			1445	1560			
Little Lime			1560	1590			
Shells			1590	1610			
Pencil Cave			1610	1612			
Big Lime			1612	1733			
Big Injun			1733	1778			
Slate			1778	1793			
Total depth			1793'				



JAN 7 1955

Formation	Color	Hard or Soft	Top	Bottom	Oil, Gas or Water	Depth Found	Remarks

Date October 12, 19 54

**UNITED FUEL GAS CO.**

APPROVED \_\_\_\_\_, Owner

By S.R. Furrell

(Title)  
Mgr. Civil Engineering Dept.