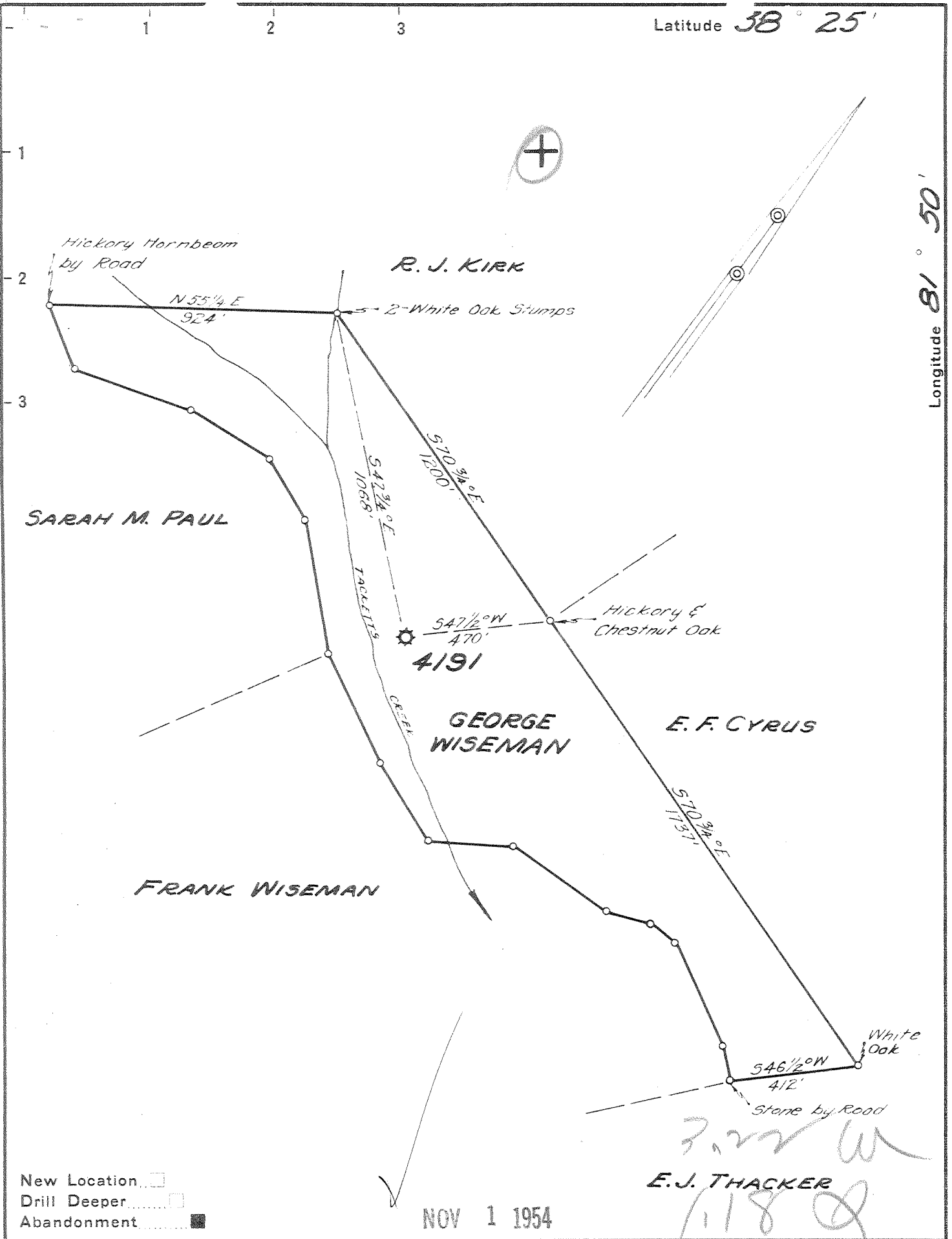


Latitude 38° 25'

Longitude 81° 50'



- New Location
- Drill Deeper
- Abandonment

NOV 1 1954

E. J. THACKER

Company UNITED FUEL GAS CO.
 Address CHARLESTON, W. VA
 Farm GEORGE WISEMAN
 Tract _____ Acres 40 Lease No. 30350
 Well (Farm) No. _____ Serial No. 4191
 Elevation (Spirit Level) 803.69'
 Quadrangle SAINT ALBANS
 County KANAWHA District JEFFERSON
 Engineer Seybert R. Ferrell
 Engineer's Registration No. 2529
 File No. 46-61 Drawing No. _____
 Date 8-19-54 Scale 1"=400'

STATE OF WEST VIRGINIA
 DEPARTMENT OF MINES
 OIL AND GAS DIVISION
 CHARLESTON

WELL LOCATION MAP
 FILE NO. KAN-1109-A

+ Denotes location of well on United States Topographic Maps, scale 1 to 62,500, latitude and longitude lines being represented by border lines as shown.

- Denotes one inch spaces on border line of original tracing.

6-6 211



STATE OF WEST VIRGINIA
DEPARTMENT OF MINES
OIL AND GAS DIVISION

1855

WELL RECORD

Oil or Gas Well Gas
(KIND)

Quadrangle St. Albans

Permit No. 109-A

Company UNITED FUEL GAS CO.

Address P.O. Box 1273, Charleston 25, W. Va.

Farm George Wisman Acres 40

Location (waters) Tacketts Creek

Well No. 4191 Elev. 803.69'

District Jefferson County Kanawha

The surface of tract is owned in fee by _____

Address _____

Mineral rights are owned by Ross Wisman, et al

Address Tornado, W.Va.

Drilling commenced 10-15-29

Drilling completed 12-18-29

Date Shot 12-6-29 From _____ To _____

With 30 qts.

Open Flow 3 /10ths Water in _____ 2 Inch

_____ /10ths Merc. in _____ Inch

Volume 83,000 Cu. Ft.

Rock Pressure 228 lbs. _____ hrs.

Oil _____ bbls., 1st 24 hrs.

Fresh water _____ feet _____ feet

Salt water _____ feet _____ feet

Casing and Tubing	Used in Drilling	Left in Well	Packers
Size			
16			Kind of Packer
13			<u>Anchor</u>
10		<u>17'</u>	Size of
8 1/4		<u>488'</u>	<u>3x5-3/16x16</u>
6 5/8		<u>1611'</u>	Depth set
5 3/16		<u>1927'</u>	<u>2221'</u>
3		<u>2314'</u>	Perf. top
2			Perf. bottom
Liners Used			Perf. top
			Perf. bottom

CASING CEMENTED _____ SIZE _____ No. Ft. _____ Date _____

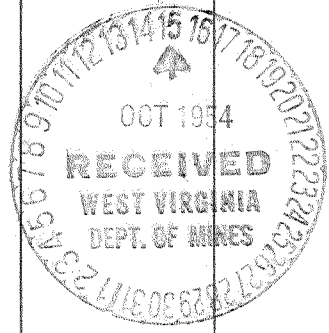
COAL WAS ENCOUNTERED AT 284 FEET 12 INCHES

_____ FEET _____ INCHES _____ FEET _____ INCHES

_____ FEET _____ INCHES _____ FEET _____ INCHES

Formation	Color	Hard or Soft	Top	Bottom	Oil, Gas or Water	Depth Found	Remarks
Soil			0	4			
Red Clay			4	17			
Sand			17	30			
Red Rock			30	45			
Slate & Shells			45	284			
Coal			284	285			
Sand			285	350			
Slate			350	355			
Sand			355	360			
Black Lime			360	388			
Slate & Shells			388	520			
Sand			520	720			
Slate			720	740			
Sand			740	772			
Slate			772	787			
Lime shells			787	798			
Slate & Shells			798	880			
Sand			880	912			
Slate			912	1015			
Sand			1015	1030			
Slate			1030	1035			
Sandy Shell			1035	1047			
Sand			1047	1062			
Slate			1062	1070			
Sand			1070	1074			
Slate			1074	1090			
Gas Sand			1090	1160			
Salt Sand			1160	1500			
Slate			1500	1515			
Maxon Sand			1515	1560			
Slate			1560	1562			
Big Lime			1562	1753			
Big Injun			1753	1835			
Slate			1835	1889			
Lime Shell			1889	1896			
Slate & Shells			1896	2195			
Brown Shale			2195	2220			
Berea Grit			2220	2245			
Gas			2228	2235			
Limey Slate			2235	2286			
Total depth			2286'				

2235 JAN 7 1955



(Over)

Formation	Color	Hard or Soft	Top	Bottom	Oil, Gas or Water	Depth Found	Remarks

Date October 13, 1954

APPROVED UNITED FUEL GAS CO., Owner

By *S. R. Ferrell*
(Title)

Mgr. Civil Engineering Dept.