

Latitude 38° 35'

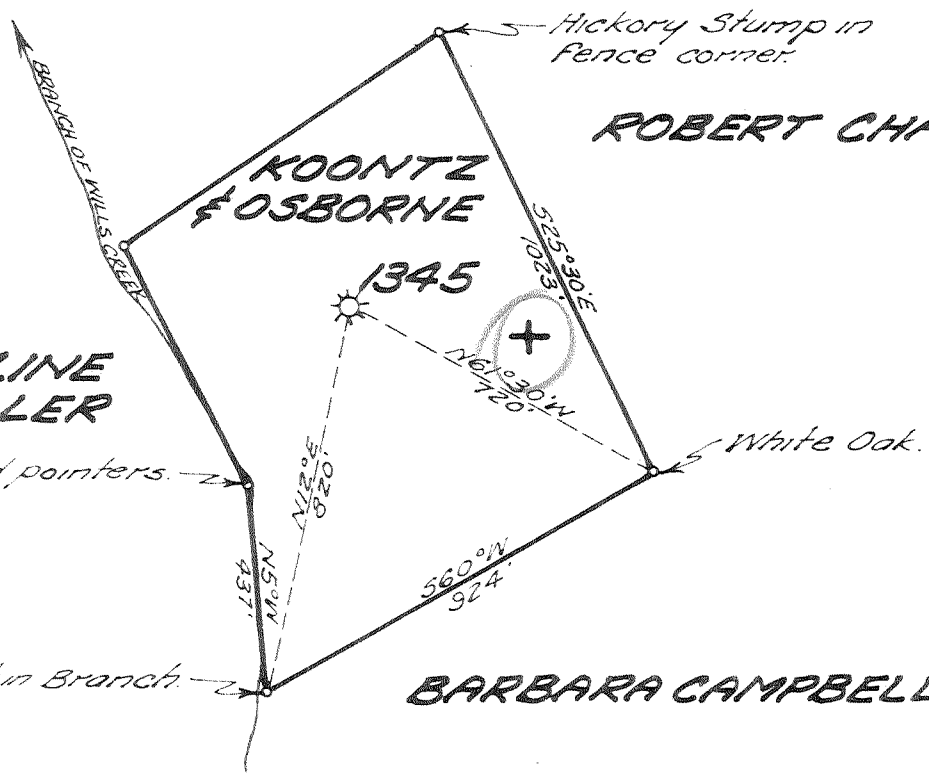
Longitude 81° 20'

GEO. E. CHANDLER

ROBERT CHANDLER

CAROLINE CHANDLER

BARBARA CAMPBELL



New Location
 Drill Deeper
 Abandonment

✓ NOV 15 1954

3.61 W
 5.35 Q

Company UNITED FUEL GAS CO.
 Address CHARLESTON, W. VA.
 Farm KOONTZ & OSBORNE
 Tract _____ Acres 21 Lease No. 12375
 Well (Farm) No. _____ Serial No. 1345
 Elevation (Spirit Level) 860'
 Quadrangle WALTON
 County KANAWHA District BIG SANDY
 Engineer Superior R. F. Smith
 Engineer's Registration No. 2529
 File No. 74-69 Drawing No. _____
 Date 10-27-54 Scale 1" = 400'

STATE OF WEST VIRGINIA
 DEPARTMENT OF MINES
 OIL AND GAS DIVISION
 CHARLESTON

WELL LOCATION MAP
 FILE NO. KAN-1128-A

+ Denotes location of well on United States Topographic Maps, scale 1 to 62,500, latitude and longitude lines being represented by border lines as shown.
 - Denotes one inch spaces on border line of original tracing.