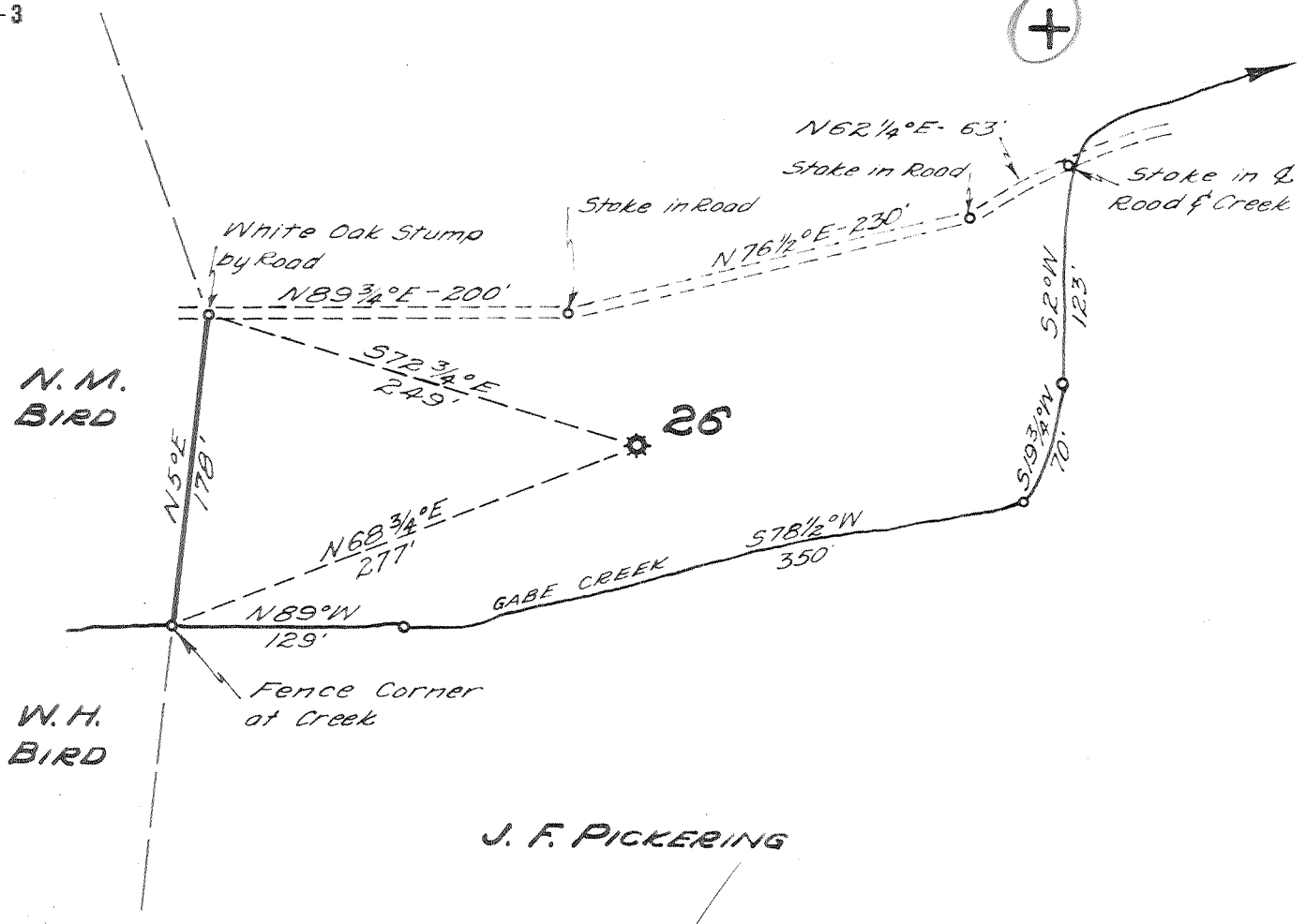


Latitude 38° 35'

Longitude 81° 20'

H. L. CANTERBERRY



- New Location...
- Drill Deeper...
- Abandonment...

NOV 22 1954

1.67 W  
3.02 Q

Company UNITED FUEL GAS CO.  
 Address CHARLESTON, W. VA.  
 Farm W. H. & B. N. BIRD  
 Tract \_\_\_\_\_ Acres 2 Lease No. 2782  
 Well (Farm) No. 1 Serial No. 26  
 Elevation (Spirit Level) 676.20'  
 Quadrangle WALTON  
 County KANAWHA District BIG SANDY  
 Engineer Paul E. Jochims  
 Engineer's Registration No. 669  
 File No. 76-71 Drawing No. \_\_\_\_\_  
 Date 10-28-54 Scale 1" = 100'

STATE OF WEST VIRGINIA  
DEPARTMENT OF MINES  
OIL AND GAS DIVISION  
CHARLESTON

WELL LOCATION MAP

FILE NO. KAN-1131-A

was 039 70610

+ Denotes location of well on United States Topographic Maps, scale 1 to 62,500, latitude and longitude lines being represented by border lines as shown.

- Denotes one inch spaces on border line of original tracing.

6-6 220

W. H. & B. N. BIRD No. 1 (76) - U. F. G. Co. - KAN-1131-A



STATE OF WEST VIRGINIA  
DEPARTMENT OF MINES  
OIL AND GAS DIVISION

18-24

Walton

WELL RECORD

Oil or Gas Well Gas  
(KIND)

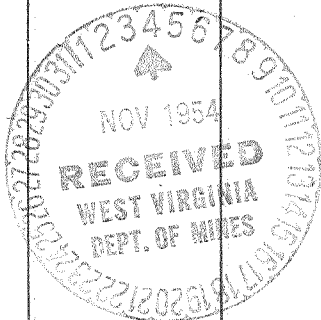
Quadrangle Walton  
Permit No. 1191A

Company UNITED FUEL GAS CO.  
Address P.O. Box 1273, Charleston 25, W. Va.  
Farm W.H. & B. N. Bird Acres 2a  
Location (waters) Gabe Creek  
Well No. 26 Elev. 676.20'  
District Big Sandy County Kanawha  
The surface of tract is owned in fee by \_\_\_\_\_  
Address \_\_\_\_\_  
Mineral rights are owned by Doretha Bird Dawson, et al  
1511-B Jackson St. Address Charleston, W. Va.  
Drilling commenced \_\_\_\_\_  
Drilling completed December, 1905  
Date Shot \_\_\_\_\_ From \_\_\_\_\_ To \_\_\_\_\_  
With \_\_\_\_\_  
Open Flow \_\_\_\_\_ /10ths Water in \_\_\_\_\_ Inch  
\_\_\_\_\_ /10ths Merc. in \_\_\_\_\_ Inch  
Volume 1,470,000 Cu. Ft.  
Rock Pressure 520 lbs. \_\_\_\_\_ hrs.  
Oil \_\_\_\_\_ bbls., 1st 24 hrs.  
Fresh water \_\_\_\_\_ feet \_\_\_\_\_ feet  
Salt water \_\_\_\_\_ feet \_\_\_\_\_ feet

Casing and Tubing	Used in Drilling	Left in Well	Packers
Size			
16			Kind of Packer
13			<u>Anchor</u>
10		<u>35</u>	Size of
8 1/4			<u>1 1/2" x 3"</u>
6 3/4		<u>1472'</u>	Depth set
5 3/16			<u>1581'</u>
3			Perf. top
2			Perf. bottom
Liners Used			Perf. top
			Perf. bottom

CASING CEMENTED \_\_\_\_\_ SIZE \_\_\_\_\_ No. Ft. \_\_\_\_\_ Date \_\_\_\_\_  
COAL WAS ENCOUNTERED AT \_\_\_\_\_ FEET \_\_\_\_\_ INCHES  
\_\_\_\_\_ FEET \_\_\_\_\_ INCHES FEET \_\_\_\_\_ INCHES  
\_\_\_\_\_ FEET \_\_\_\_\_ INCHES FEET \_\_\_\_\_ INCHES

Formation	Color	Hard or Soft	Top	Bottom	Oil, Gas or Water	Depth Found	Remarks
Big Lime			1472	1586			
Big Injun			1586	1626			
Slate			1626	1630			
Total depth			1630'				
					This well was drilled deeper 2-1909 depth 1672' Gas pay in big injun.		



JAN 7 1955

