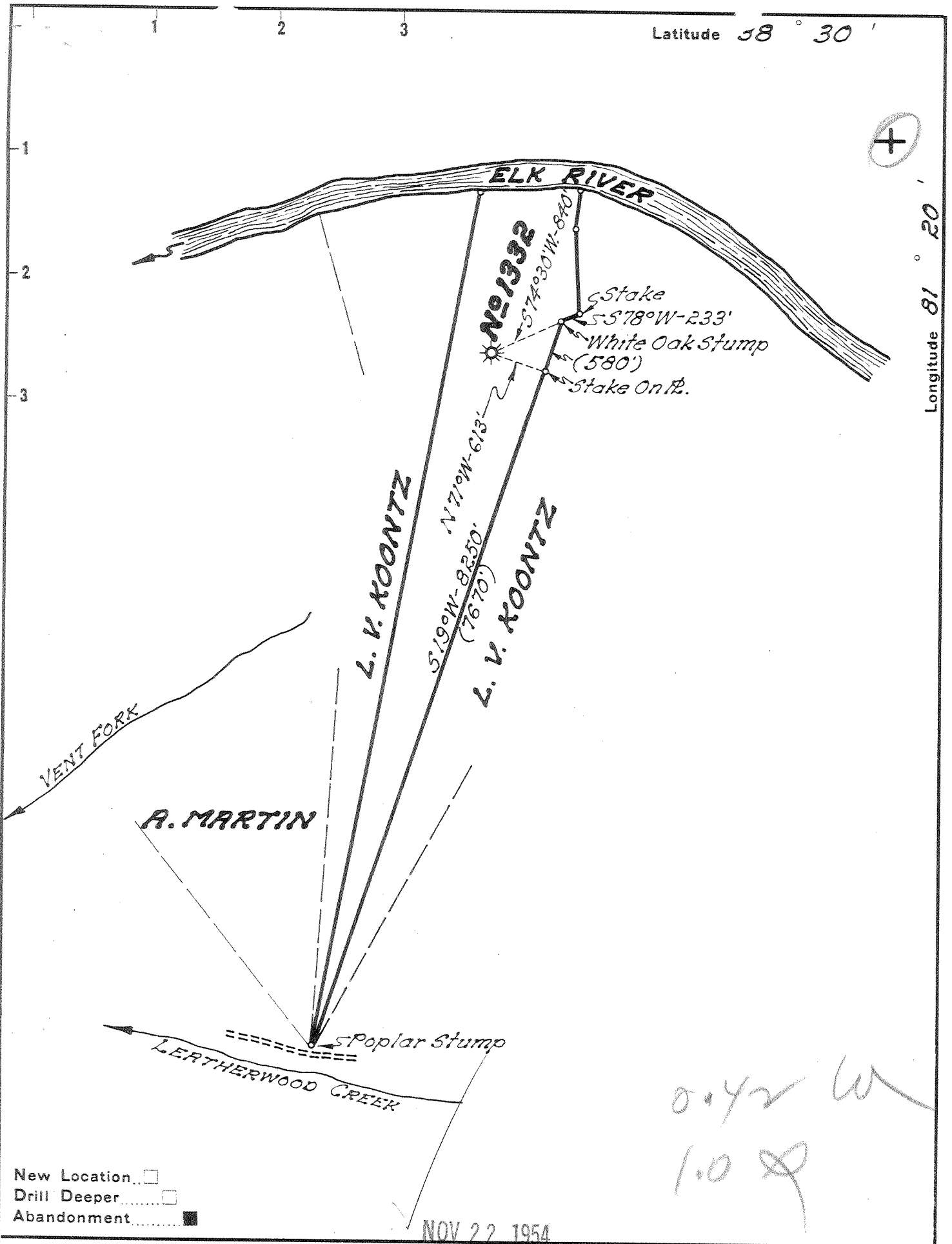


Latitude 38° 30'

Longitude 81° 20'



New Location   
 Drill Deeper   
 Abandonment

NOV 22 1954

Company **UNITED FUEL GAS CO.**  
 Address **CHARLESTON, W. VA.**  
 Farm **SARAH C. OSBORNE**  
 Tract \_\_\_\_\_ Acres **170** Lease No. **12368**  
 Well (Farm) No. \_\_\_\_\_ Serial No. **1332**  
 Elevation (Spirit Level) **790.0**  
 Quadrangle **CLENDENIN**  
 County **KANAWHA** District **BIG SANDY**  
 Engineer *Paul C. ...*  
 Engineer's Registration No. **669**  
 File No. **76-67** Drawing No. \_\_\_\_\_  
 Date **11-3-54** Scale **1"=1320'**

STATE OF WEST VIRGINIA  
 DEPARTMENT OF MINES  
 OIL AND GAS DIVISION  
 CHARLESTON

WELL LOCATION MAP  
 FILE NO. **KAN-1135-A**

+ Denotes location of well on United States Topographic Maps, scale 1 to 62,500, latitude and longitude lines being represented by border lines as shown.

- Denotes one inch spaces on border line of original tracing.

G-C 220



STATE OF WEST VIRGINIA  
DEPARTMENT OF MINES  
OIL AND GAS DIVISION

1910

Quadrangle Clendenin  
Permit No. 1135-A

WELL RECORD

Oil or Gas Well Gas  
(KIND)

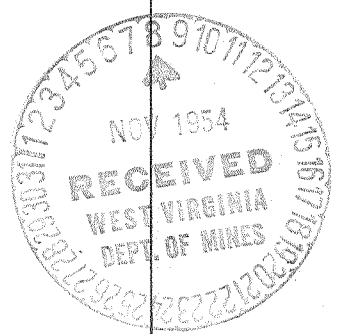
Company UNITED FUEL GAS CO.  
Address P.O. Box 1273, Charleston 25, W. Va.  
Farm Sarah C. Osborne Acres 170  
Location (waters) Elk River  
Well No. 1332 Elev. 790'  
District Big Sandy County Kanawha  
The surface of tract is owned in fee by \_\_\_\_\_  
Address \_\_\_\_\_  
Mineral rights are owned by Gypsy Cook, Agt., et al  
Address Clendenin, W.Va.  
Drilling commenced 5-29-23  
Drilling completed 7-23-23  
Date Shot \_\_\_\_\_ From \_\_\_\_\_ To \_\_\_\_\_  
With \_\_\_\_\_  
Open Flow \_\_\_\_\_ /10ths Water in \_\_\_\_\_ Inch  
22 /10ths Merc. in 2 Inch  
Volume 823,968 Cu. Ft.  
Rock Pressure 225 lbs. \_\_\_\_\_ hrs.  
Oil \_\_\_\_\_ bbls., 1st 24 hrs.  
Fresh water \_\_\_\_\_ feet \_\_\_\_\_ feet  
Salt water \_\_\_\_\_ feet \_\_\_\_\_ feet

Casing and Tubing	Used in Drilling	Left in Well	Packers
Size			
16			Kind of Packer
13			<u>Anchor</u>
10			Size of
8 1/2	<u>635'</u>		<u>3x-5/316"</u>
6%		<u>1645'</u>	Depth set
5 3/16			<u>1628</u>
3		<u>1937'</u>	Perf. top
2			Perf. bottom
Liners Used			Perf. top
			Perf. bottom

CASING CEMENTED \_\_\_\_\_ SIZE \_\_\_\_\_ No. Ft. \_\_\_\_\_ Date \_\_\_\_\_

COAL WAS ENCOUNTERED AT 295 FEET 24 INCHES  
1170 FEET 60 INCHES FEET INCHES  
FEET INCHES FEET INCHES

Formation	Color	Hard or Soft	Top	Bottom	Oil, Gas or Water	Depth Found	Remarks
Soil			16				
Slate			14	100			
Coal			295	297	Hole reduced 1617'		
Gas			880	910	Show gas no test 1670'		
Salt Sand			920	1130	Gas no test 1800'		
Coal			1170	1175	Gas 20/10 W in 2" 1820-1825'		
Little Lime			1490	1520	Gas 22/10 Merc. in 2" 1840-1850'		
Cave			1535	1542	Packer set at 1628'		
Big Lime			1542	1668			
Injun			1668	1685			
Slate & Shells			1685	1758			
Swir			1758				
Gas			1800				
Bottom Weir			1914'				
Total depth			1916'				



AUG 12 1955

