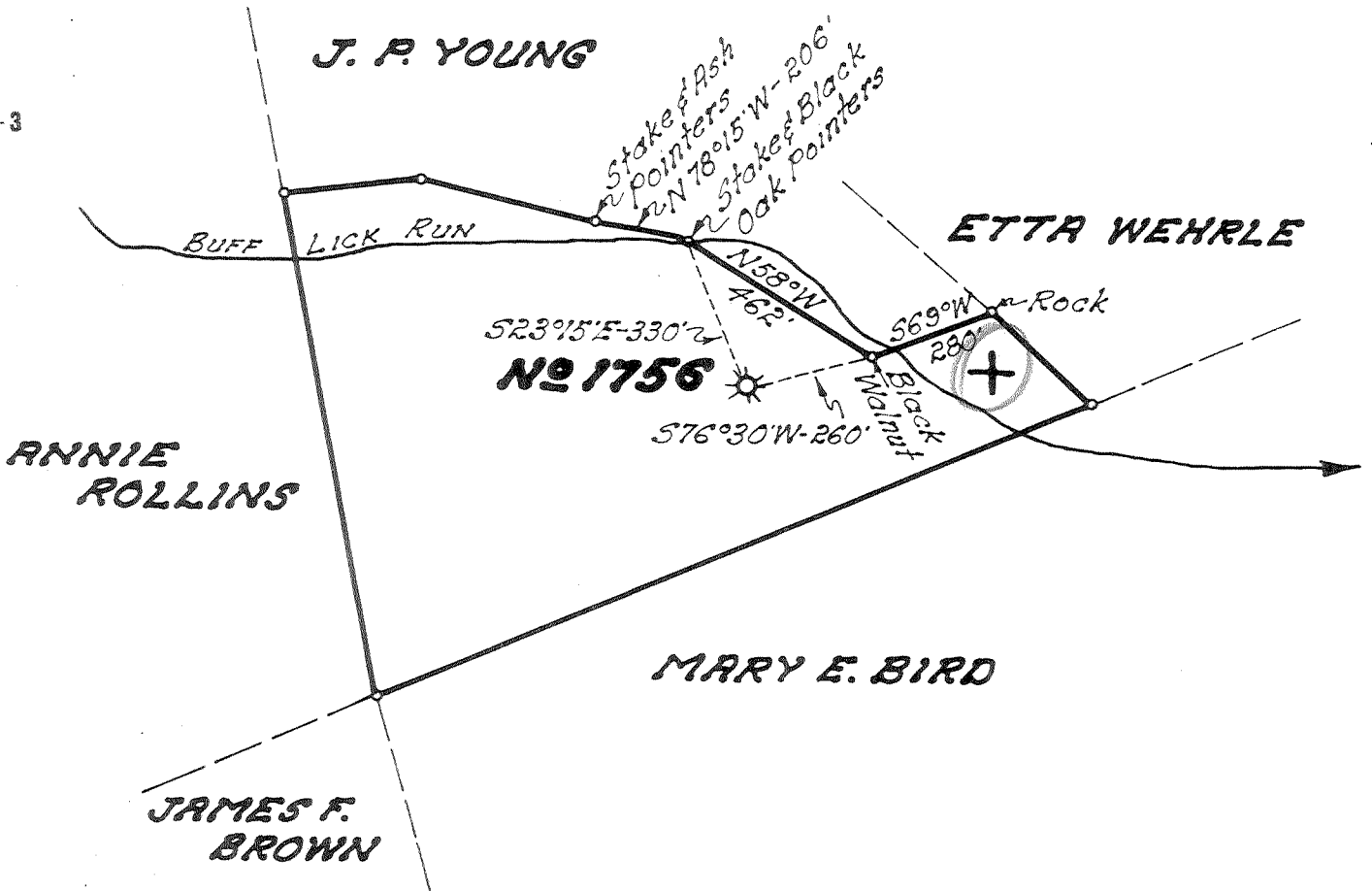


Latitude 38° 35'

Longitude 81° 20'



- New Location
- Drill Deeper
- Abandonment

NOV 22 1954

2.15 W  
 4.42 X

Company **UNITED FUEL GAS CO.**  
 Address **CHARLESTON, W. VA.**  
 Farm **J. D. FOREMAN, ET AL.**  
 Tract \_\_\_\_\_ Acres **20** Lease No. **15181**  
 Well (Farm) No. **1** Serial No. **1756**  
 Elevation (Spirit Level) **735.71**  
 Quadrangle **WALTON**  
 County **KANAWHA** District **BIG SANDY**  
 Engineer *Paul E. Joachim*  
 Engineer's Registration No. **669**  
 File No. **74-71** Drawing No. \_\_\_\_\_  
 Date **11-4-54** Scale **1" = 400'**

STATE OF WEST VIRGINIA  
 DEPARTMENT OF MINES  
 OIL AND GAS DIVISION  
 CHARLESTON

WELL LOCATION MAP  
 FILE NO. **KAN-1140-A**

+ Denotes location of well on United States Topographic Maps, scale 1 to 62,500, latitude and longitude lines being represented by border lines as shown.

- Denotes one inch spaces on border line of original tracing.

6-6 220



STATE OF WEST VIRGINIA  
DEPARTMENT OF MINES  
OIL AND GAS DIVISION

1865

Quadrangle Walton

WELL RECORD

Permit No. 1140-A

Oil or Gas Well Gas  
(KIND)

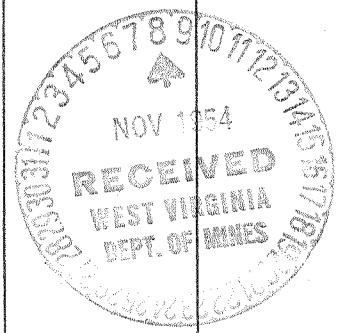
Company UNITED FUEL GAS CO.  
Address P.O. Box 1273, Charleston 25, W. Va.  
Farm J. D. Foreman Acres 20  
Location (waters) Buff Lick Run  
Well No. 1756 Elev. 735.71'  
District Big Sandy County Kanawha  
The surface of tract is owned in fee by \_\_\_\_\_  
Address \_\_\_\_\_  
Mineral rights are owned by Burl Robinson, Gdn., et al - Box 146  
Address Merrill, Michigan  
Drilling commenced 9-30-26  
Drilling completed 11-4-26  
Date Shot 11-6-26 From 1668 To 1675  
With 20 cts.

Casing and Tubing	Used in Drilling	Left in Well	Packers
Size			
16			Kind of Packer <u>Anchor</u>
18			
10			Size of <u>3x5-3/16x16</u>
8 1/4	<u>392'</u>		Depth set <u>1635'</u>
6 5/8		<u>1569'4"</u>	
5 3/16			Perf. top
3		<u>1740'9"</u>	Perf. bottom
2			Perf. top
Liners Used			Perf. bottom

Open Flow 4 /10ths Water in 2 Inch  
/10ths Merc. in \_\_\_\_\_ Inch  
Volume 94,560 Cu. Ft.  
Rock Pressure 105 lbs. \_\_\_\_\_ hrs.  
Oil \_\_\_\_\_ bbls., 1st 24 hrs.  
Fresh water \_\_\_\_\_ feet \_\_\_\_\_ feet  
Salt water 1071 feet \_\_\_\_\_ feet

CASING CEMENTED \_\_\_\_\_ SIZE \_\_\_\_\_ No. Ft. \_\_\_\_\_ Date \_\_\_\_\_  
COAL WAS ENCOUNTERED AT 1291 FEET 24 INCHES  
\_\_\_\_\_ FEET \_\_\_\_\_ INCHES \_\_\_\_\_ FEET \_\_\_\_\_ INCHES  
\_\_\_\_\_ FEET \_\_\_\_\_ INCHES \_\_\_\_\_ FEET \_\_\_\_\_ INCHES

Formation	Color	Hard or Soft	Top	Bottom	Oil, Gas or Water	Depth Found	Remarks
Soil			0	16	Water 1071'		
Slate & Shells			16	90	Coal 1291-1293		
Lime Shells			90	150	Show gas Big Lime 1603'		
Sand			150	210	Gas injun 1671-1675'		
Slate & Shells			210	300			
Slate			300	392			
Sand			392	417			
Slate			417	500			
Lime Shells			500	547			
Sand			547	640			
Slate			640	765			
Slate & Shells			765	826	Hole reduced 1625'		
Sand			826	891			
Slate & Shells			891	961			
Slate			961	1039			
1st Salt Sand			1039	1167			
Slate			1167	1221			
2nd Salt Sand			1221	1361			
Slate			1361	1381			
Maxon Sand			1381	1485			
Little Lime			1485	1533			
Pencil Cave			1533	1535			
Big Lime			1535	1650			
Big Injun			1650	1705			
Slate			1705	1731			
Total depth			1731'				



APR 22 1955

